



West Winch Housing Access Environmental Statement Chapter 8: Biodiversity Annex 8.9 Terrestrial Invertebrate Survey Report (2021) Appendix D

Author: WSP

Document Reference: NCC/3.08.13d

Version Number: 01

Date: November 2023



Contents

1	Figures	3
---	---------------	---

Figures

Figure 1-1 – Terrestrial Invert Survey Areas	4
Figure 1-2 – Entomological Methods used for Terrestrial Invert Surveys – Parcels 1 and 2.....	5
Figure 1-3 – Entomological Methods used for Terrestrial Invert Surveys – Parcels 3 and 4.....	6



1 Figures

1.1.1 The figures below show the terrestrial invert survey areas and the Entomological Methods used for Terrestrial Invert Surveys for parcels 1 to 4.

Figure 1-1 – Terrestrial Invert Survey Areas

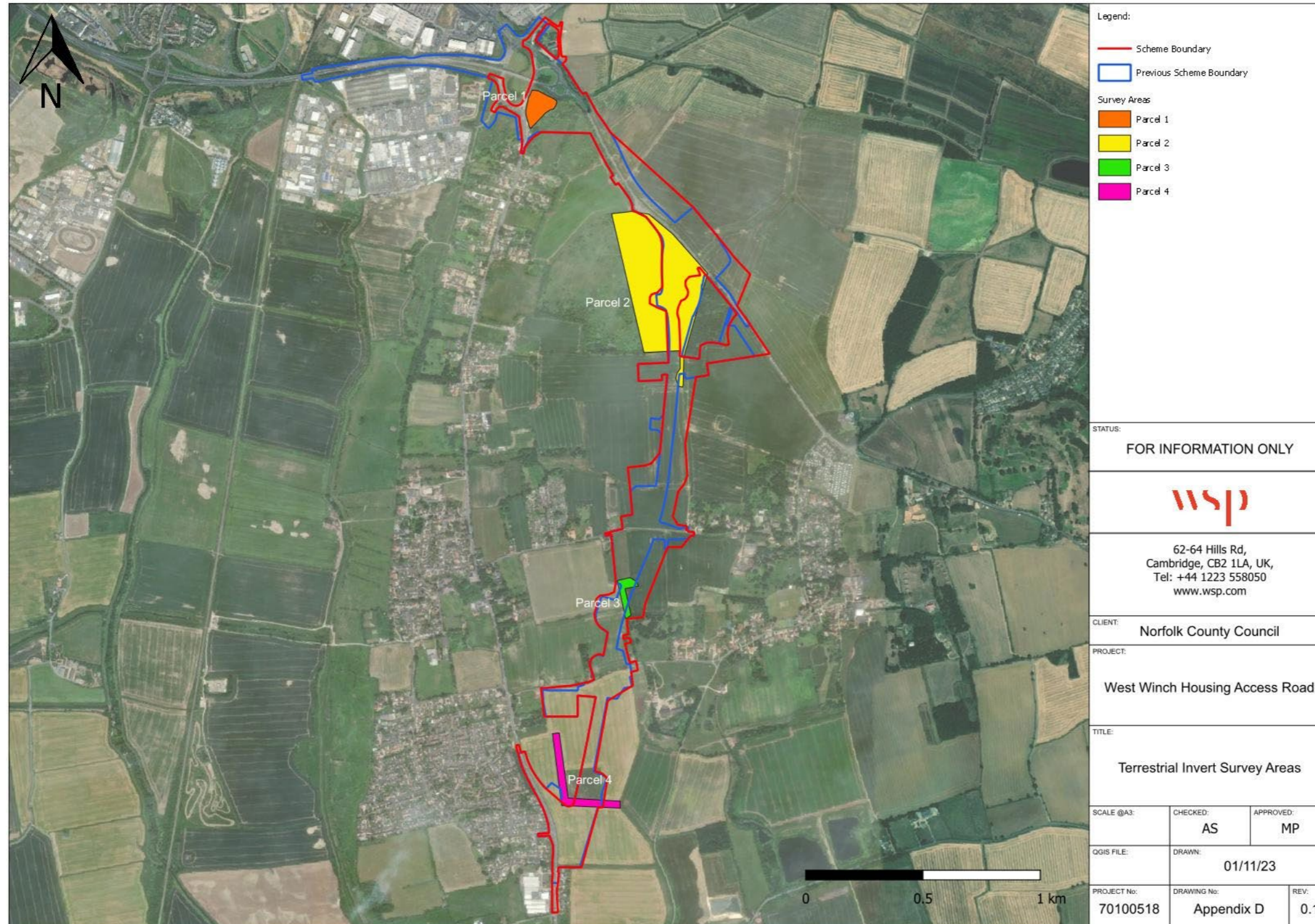


Figure 1-2 – Entomological Methods used for Terrestrial Invert Surveys – Parcels 1 and 2

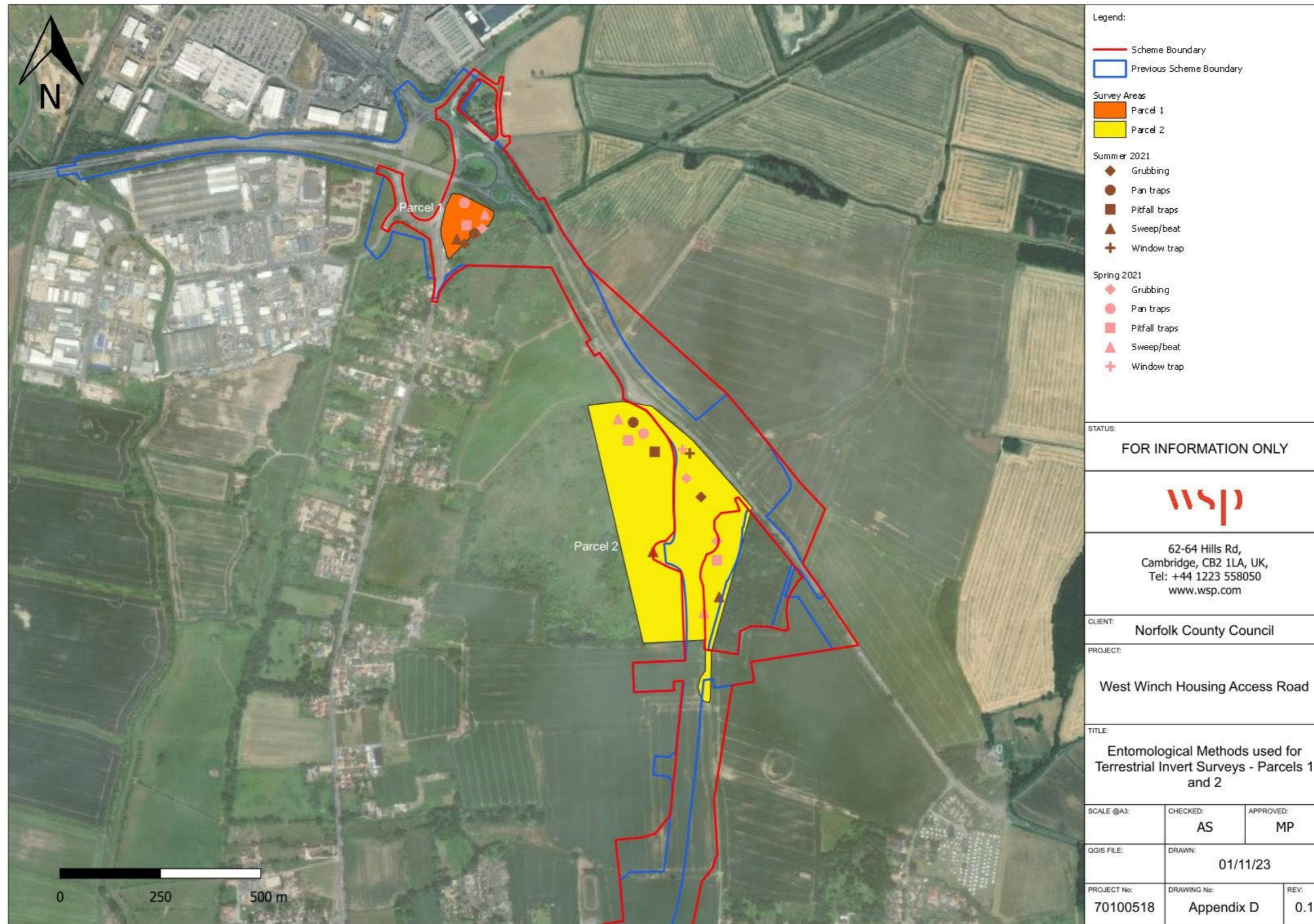


Figure 1-3 – Entomological Methods used for Terrestrial Invert Surveys – Parcels 3 and 4

