



# **West Winch Housing Access Road**

## **Lighting Assessment Report – Appendix A Indicative Road Lighting A47 Strategy Drawings for Planning**

Author: WSP

Document Reference: NCC.2.16.01

Version Number: 01

Date: December 2023



## **Contents**

1 Appendix A - Indicative Road Lighting A47 Strategy Drawings for Planning..... 3

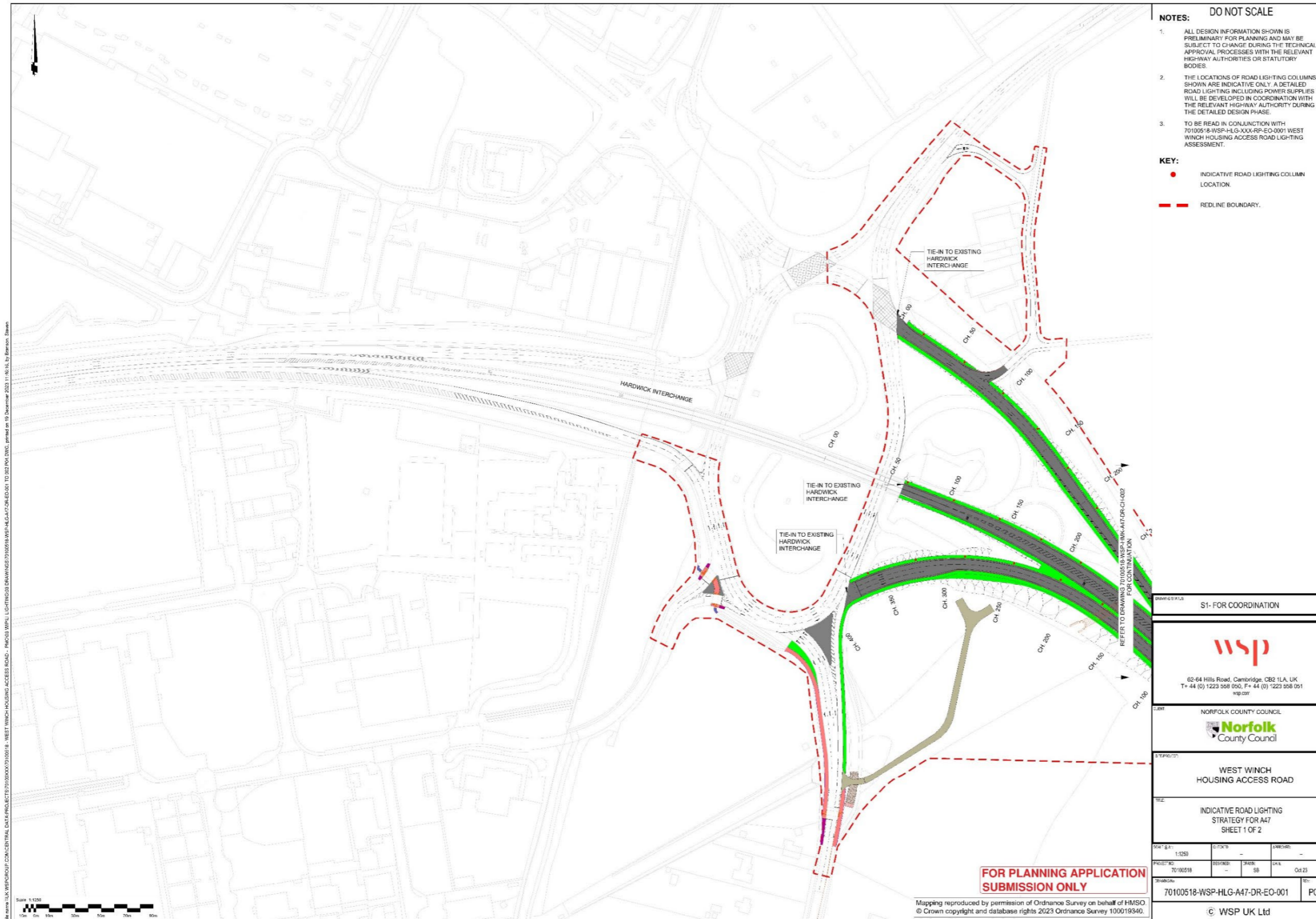
### **Figures**

Figure 1-1 – Indicative road lighting strategy for A47 – Sheet 1 of 2..... 4  
Figure 1-2 - Indicative road lighting strategy for A47 – Sheet 2 of 2..... 5

## **1 Appendix A - Indicative Road Lighting A47 Strategy Drawings for Planning**

1.1.1 The drawings below show the indicative column locations / extents of lighting for planning purposes only, as part of the A47 Road Lighting (National Highways) tie-in / works.

**Figure 1-1 – Indicative road lighting strategy for A47 – Sheet 1 of 2**



**Figure 1-2 - Indicative road lighting strategy for A47 – Sheet 2 of 2**

