



West Winch Housing Access Road Landscape Plans

Author: WSP

Document Reference: 2.13.00

Version Number: P05

Date: December 2023



Contents

1	Introduction	4
1.1	Overview	4
2	Drawings	5

Figures

Figure 1 - Landscape Plan – Sheet 001 - Key Plan	Error! Bookmark not defined.
Figure 2: Landscape Plan – Sheet 002	7
Figure 3: Landscape Plan – Sheet 003	8
Figure 4: Landscape Plan – Sheet 004	9
Figure 5: Landscape Plan – Sheet 005	10
Figure 6: Landscape Plan – Sheet 006	11
Figure 7: Landscape Plan – Sheet 007	12
Figure 8: Landscape Plan – Sheet 008	13
Figure 9: Landscape Plan – Sheet 009	14
Figure 10: Landscape Plan – Sheet 010	15
Figure 11: Landscape Plan – Sheet 011 – Planting Schedule	16



1 Introduction

1.1 Overview

1.1.1 The Landscape Plans present the soft landscape design for the proposed West Winch Housing Access Road (WWHAR) either side of the main highway, and the Red Line Boundary extent, on Ordinance Survey base mapping

1.1.2 The landscape design is presented on 11 drawing sheets including:

- Sheet 1 - A key plan
- Sheet 2 to Sheet 10 – The Landscape Design from north to south
- Sheet 11 – Planting schedule (list of species, size, anticipated quantities)

1.1.3 The landscape design comprises various planting types and features including:

- Existing vegetation retained
- Proposed attenuation features
- Proposed individual trees
- Proposed native deciduous woodland core
- Proposed native deciduous wet woodland
- Proposed native deciduous woodland edge
- Proposed wildflower grassland
- Proposed improved grassland
- Proposed amenity grassland
- Proposed native hedgerow



- Proposed native hedgerow with trees

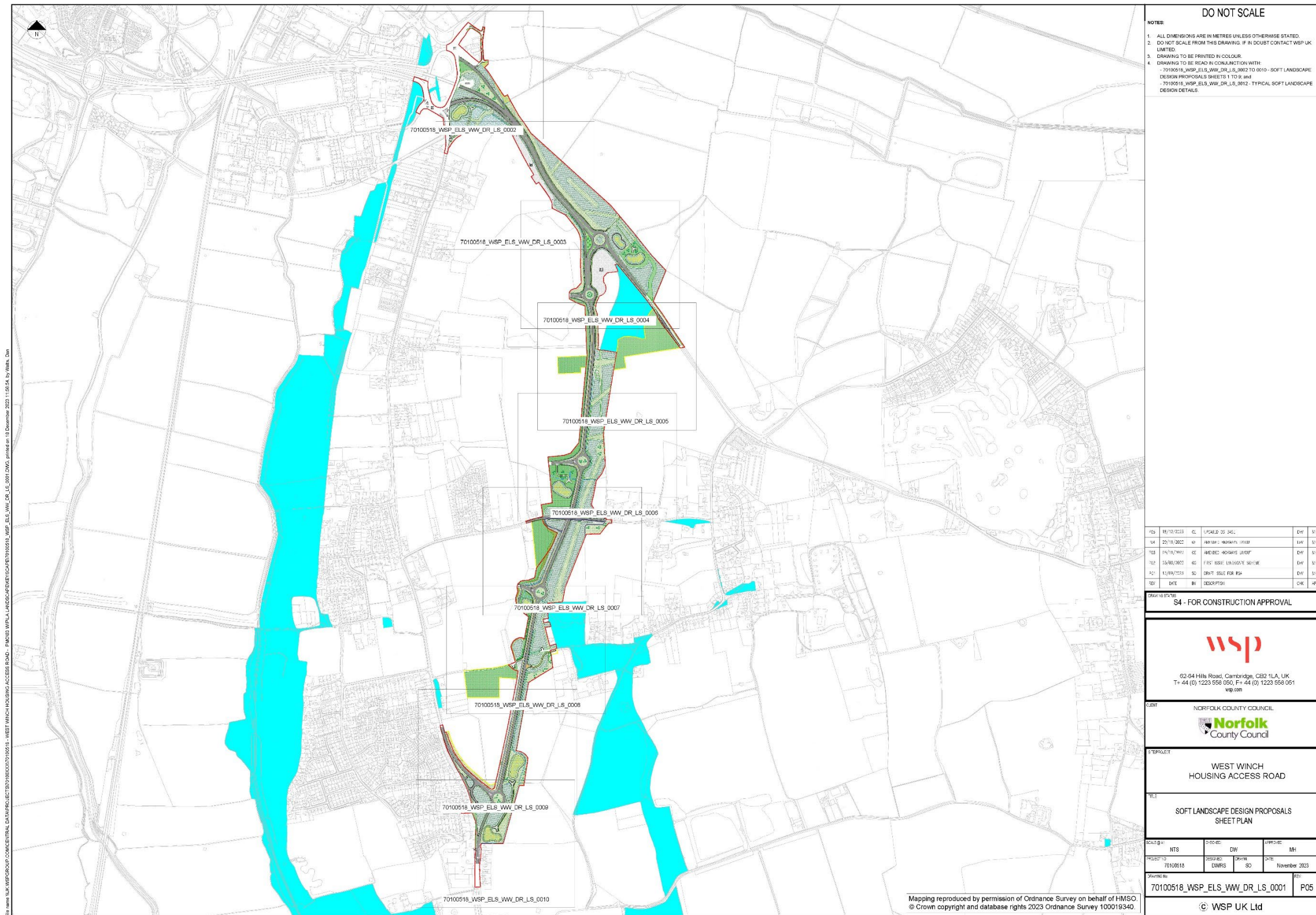
1.1.4 For each area of planting, a species list and indicative number of specimens are annotated on each sheet, which corresponds with Sheet 11 presenting the consolidated Planting Schedule.

1.1.5 This drawing includes the highway overlaid indicatively, and does not show the proposed housing development or other highway features associated with the scheme (such as road markings or crossings).

2 Drawings

2.1.1 The Landscape Plan drawings described above is provided on the following pages:

Figure 2-1 - Landscape Plan – Sheet 001 - Key Plan



DO NOT SCALE

NOTE:

1. ALL DIMENSIONS ARE IN METRES UNLESS OTHERWISE STATED.
2. DO NOT SCALE FROM THIS DRAWING. IF IN DOUBT CONTACT WSP UK LIMITED.
3. DRAWING TO BE PRINTED IN COLOUR.
4. DRAWING TO BE READ IN CONJUNCTION WITH:
 - 70100518_WSP_ELS_WW_DR_LS_0002 TO 0010 - SOFT LANDSCAPE DESIGN PROPOSALS SHEETS 1 TO 9; and
 - 70100518_WSP_ELS_WW_DR_LS_0012 - TYPICAL SOFT LANDSCAPE DESIGN DETAILS.

REV	DATE	BY	DESCRIPTION	CHK	APP
001	18/10/2023	CL	ISSUED FOR RFI	DW	MT
002	22/10/2023	SP	AMEND: WORKS ORDER	DW	MT
003	04/11/2023	CE	AMEND: WORKS ORDER	DW	MT
004	15/10/2023	GG	FIRST ISSUE LANDSCAPE SHEET	DW	MT
005	11/10/2023	SC	DRAWN FOR RFI	DW	MT

Drawn by: S4

S4 - FOR CONSTRUCTION APPROVAL

wsp

02-84 Hills Road, Cambridge, CB2 1LA, UK
T+44 (0) 1223 558 050, F+44 (0) 1223 558 051
wsp.com

NORFOLK COUNTY COUNCIL

Norfolk County Council

WEST WINCH HOUSING ACCESS ROAD

SOFT LANDSCAPE DESIGN PROPOSALS SHEET PLAN

SCALE	DATE	BY	APPROVED
NTS	DW	MT	

PROJECT NO	DESIGNED	DRAWN	CHECKED	DATE
70100518	DWRS	SC		November 2023

Drawing No: 70100518_WSP_ELS_WW_DR_LS_0001

Sheet No: P05

© WSP UK Ltd

Mapping reproduced by permission of Ordnance Survey on behalf of HMSO.
© Crown copyright and database rights 2023 Ordnance Survey 100019340

Figure 2-2: Landscape Plan – Sheet 002

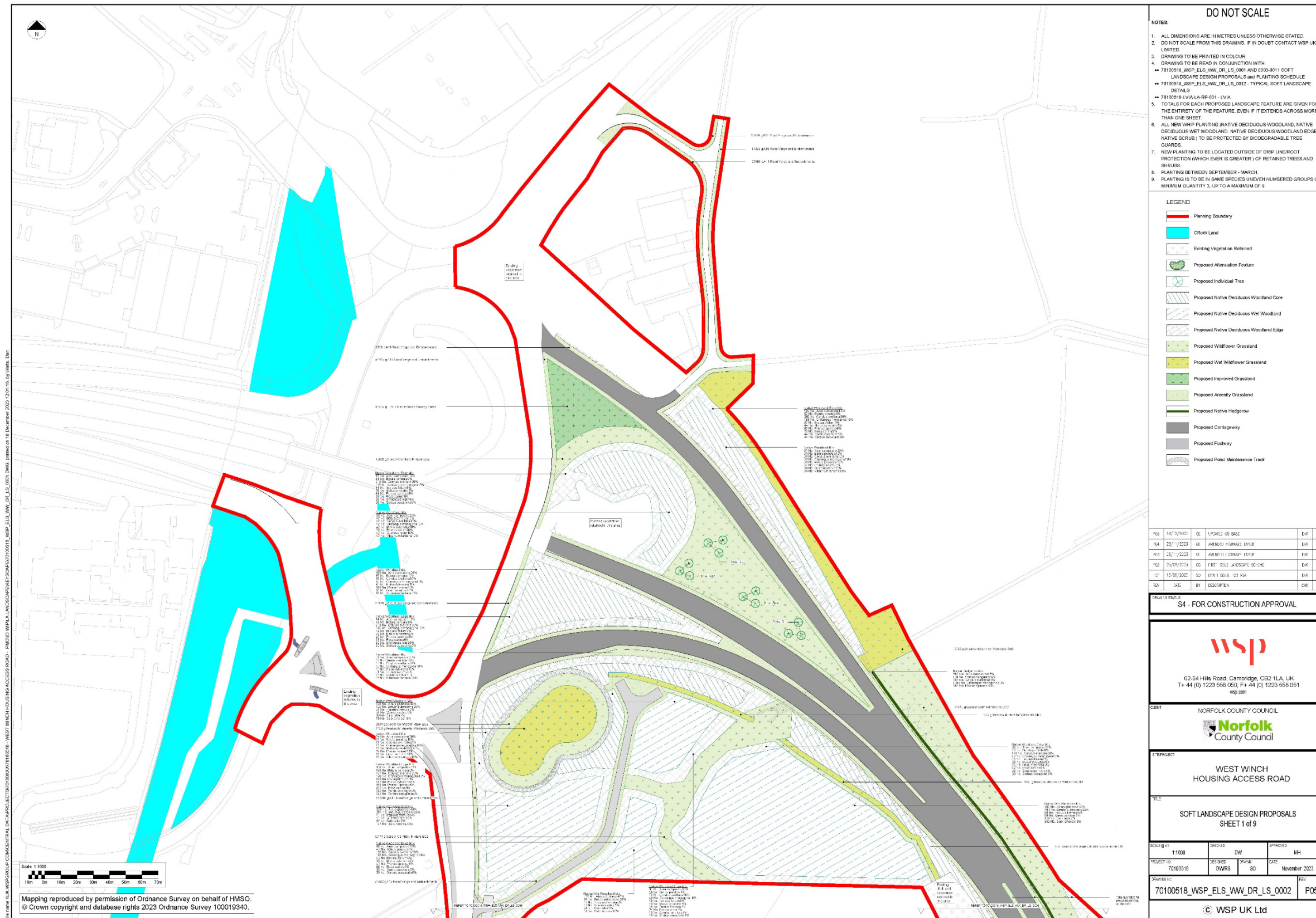


Figure 2-3: Landscape Plan – Sheet 003

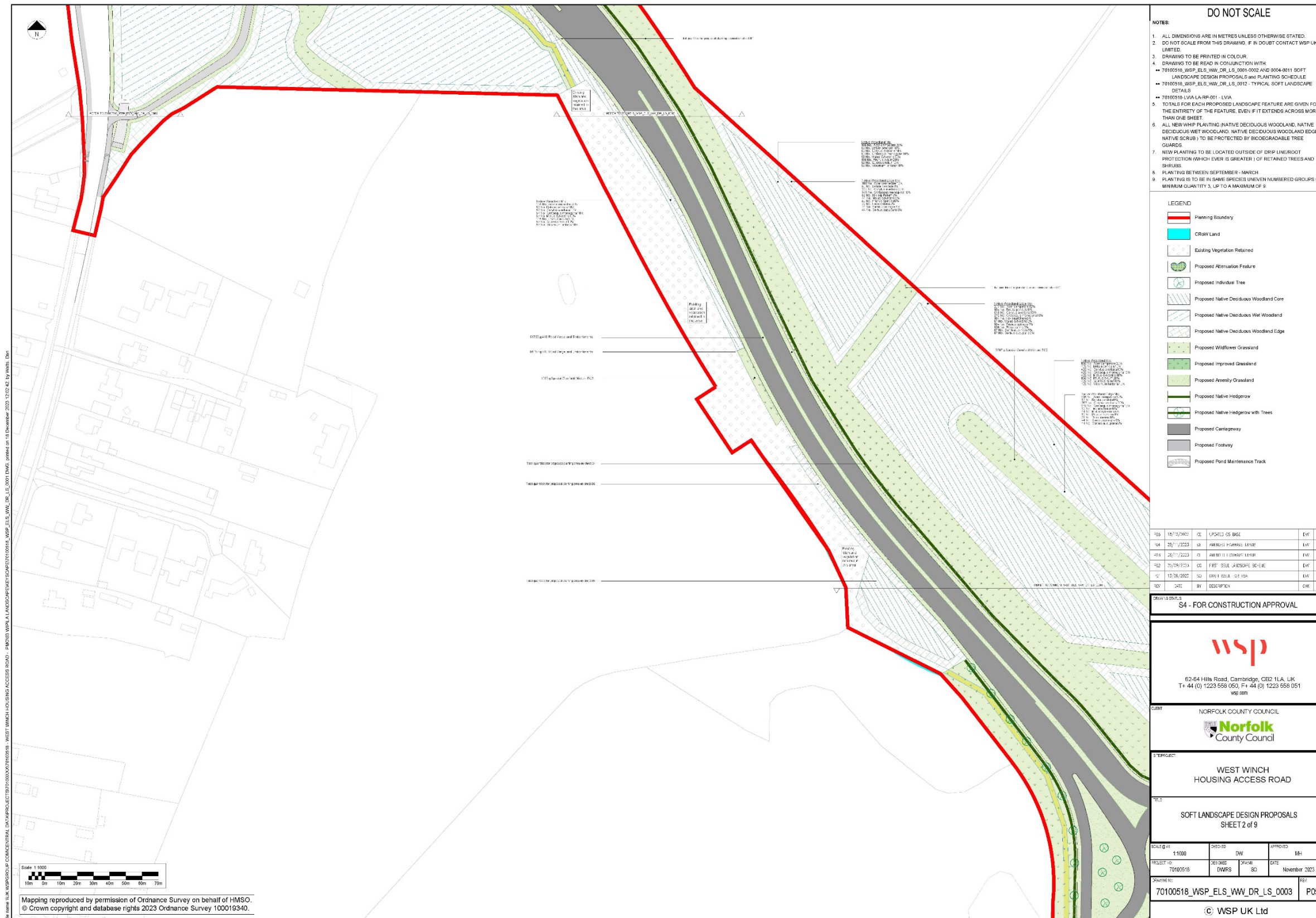


Figure 2-4: Landscape Plan – Sheet 004

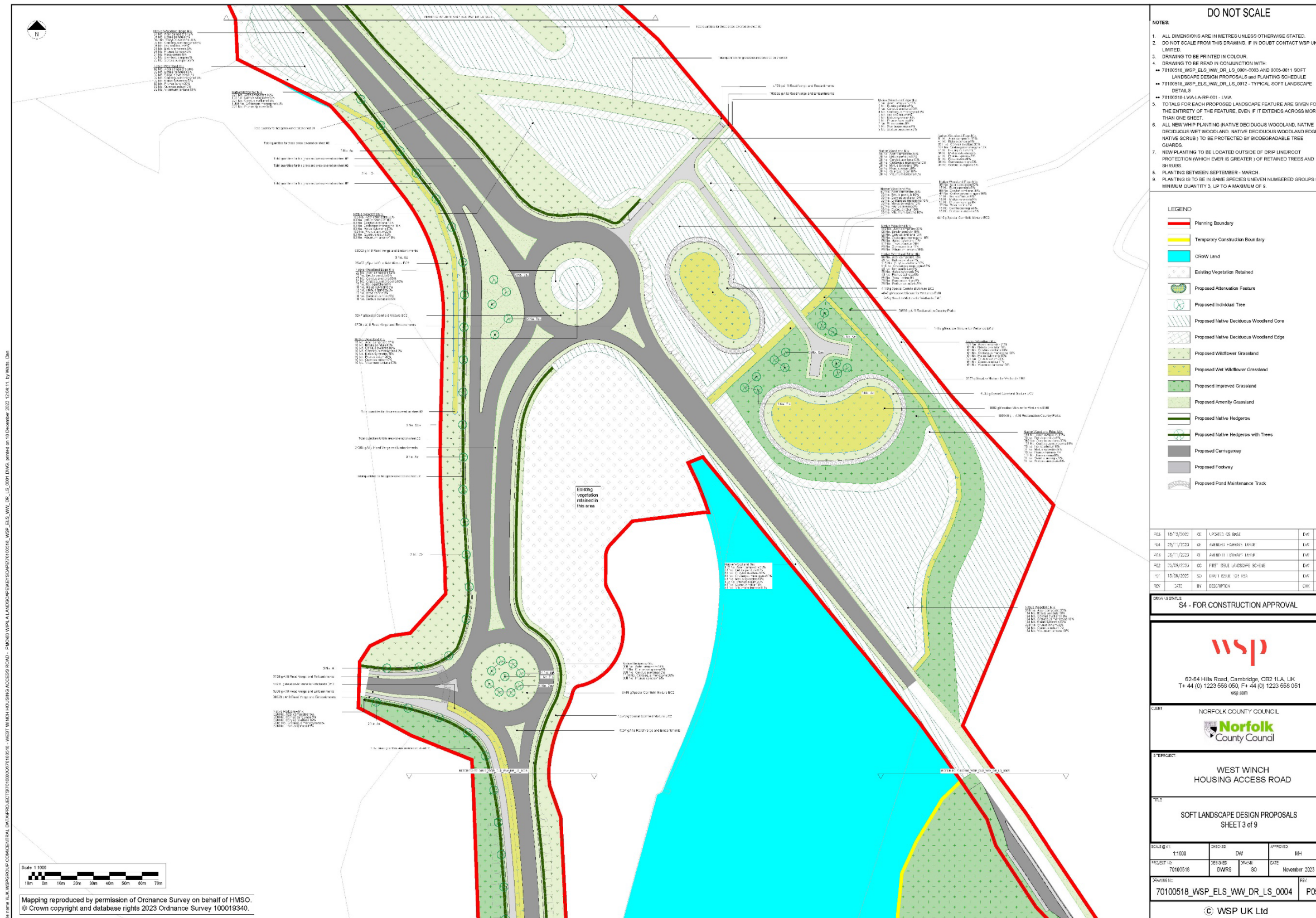


Figure 2-5: Landscape Plan – Sheet 005

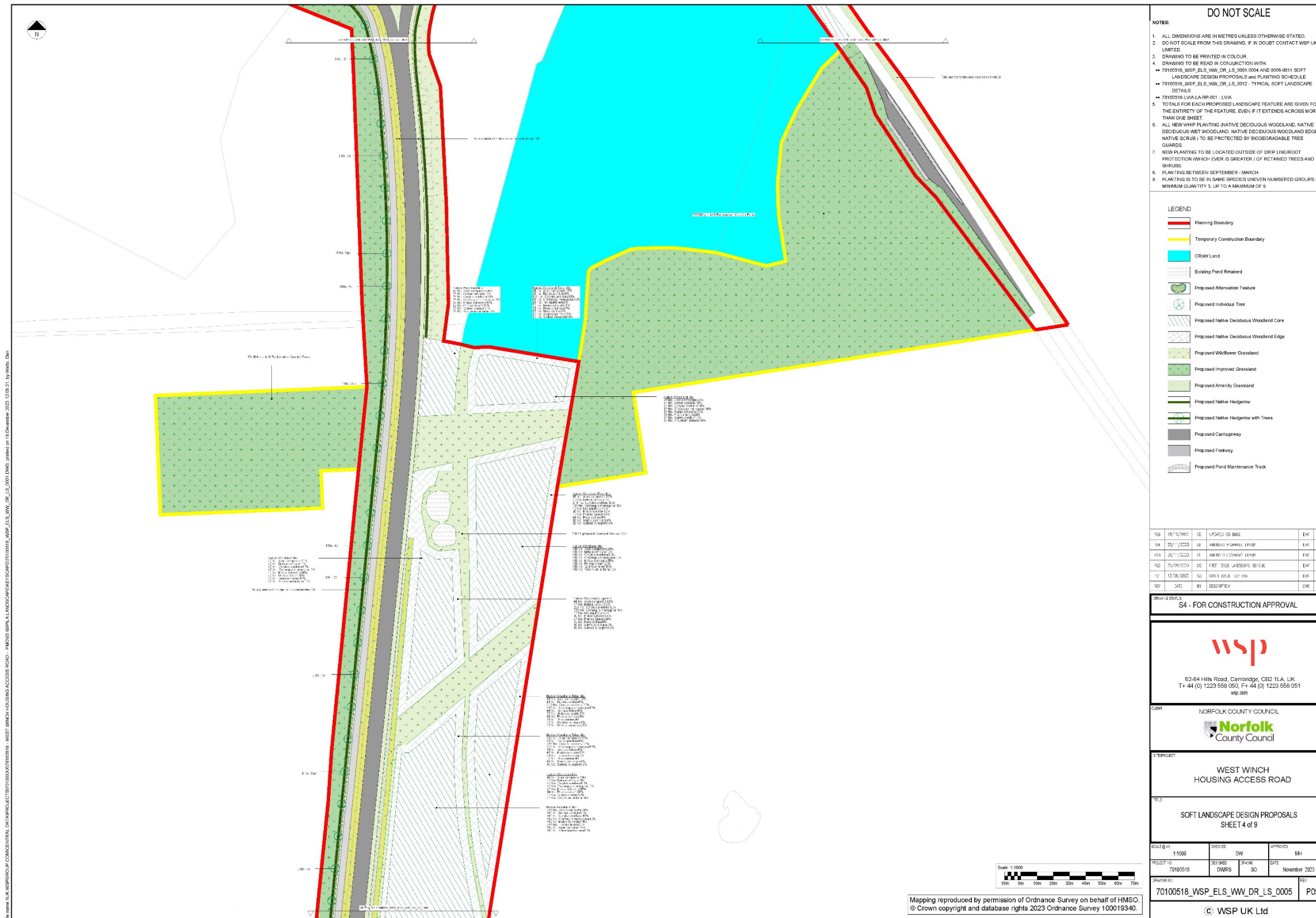


Figure 2-6: Landscape Plan – Sheet 006



Figure 2-7: Landscape Plan – Sheet 007

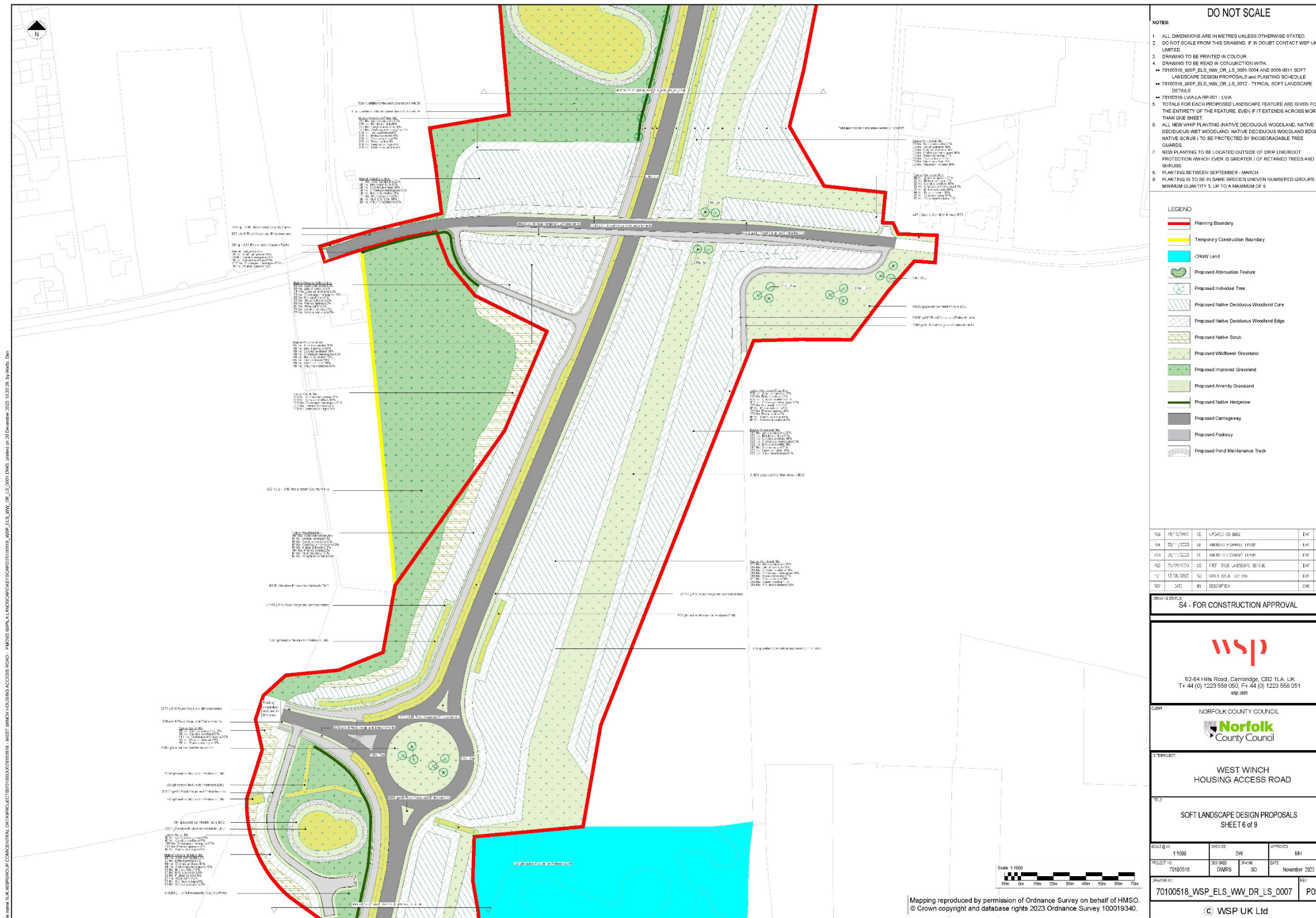


Figure 2-8: Landscape Plan – Sheet 008

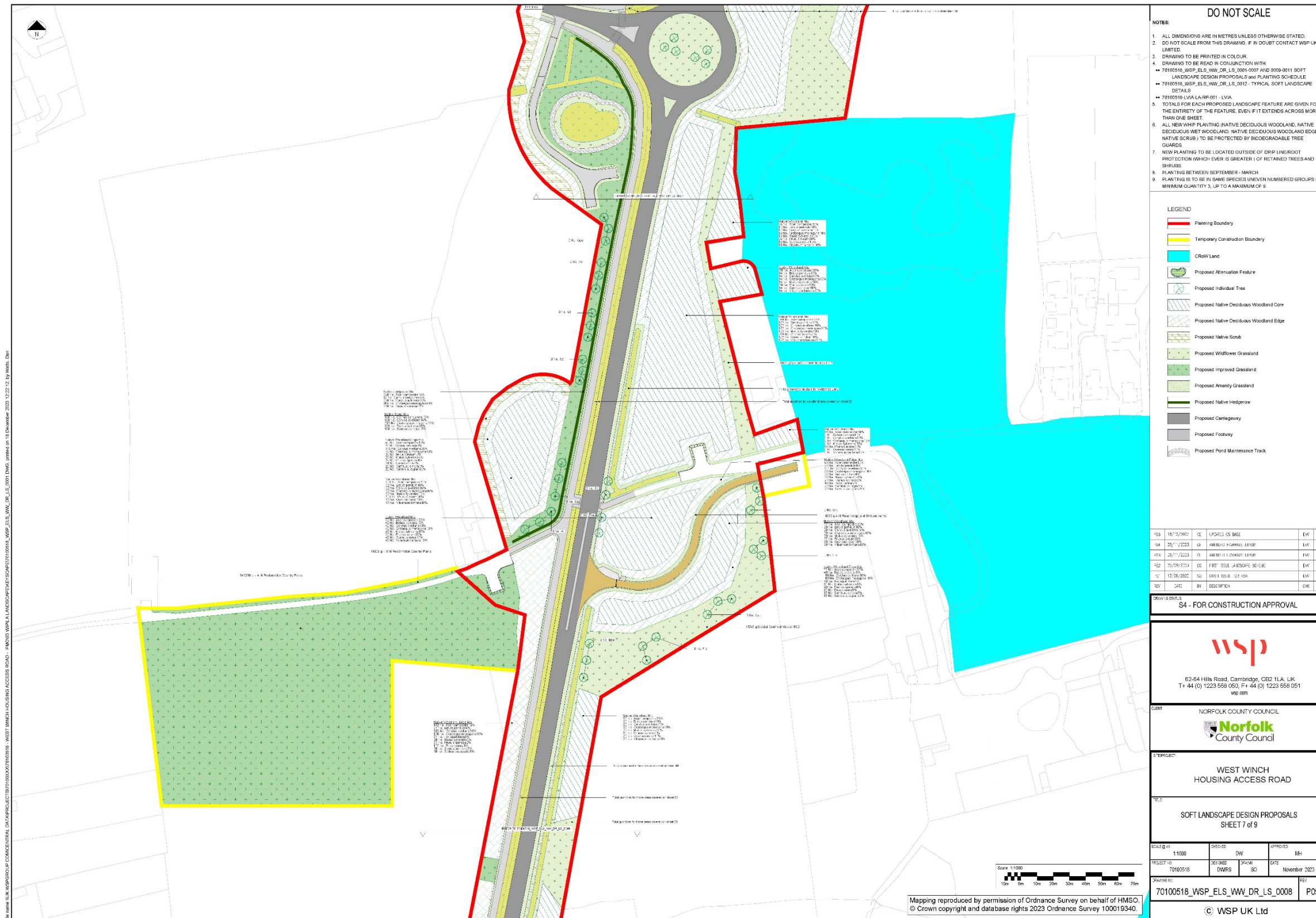


Figure 2-9: Landscape Plan – Sheet 009

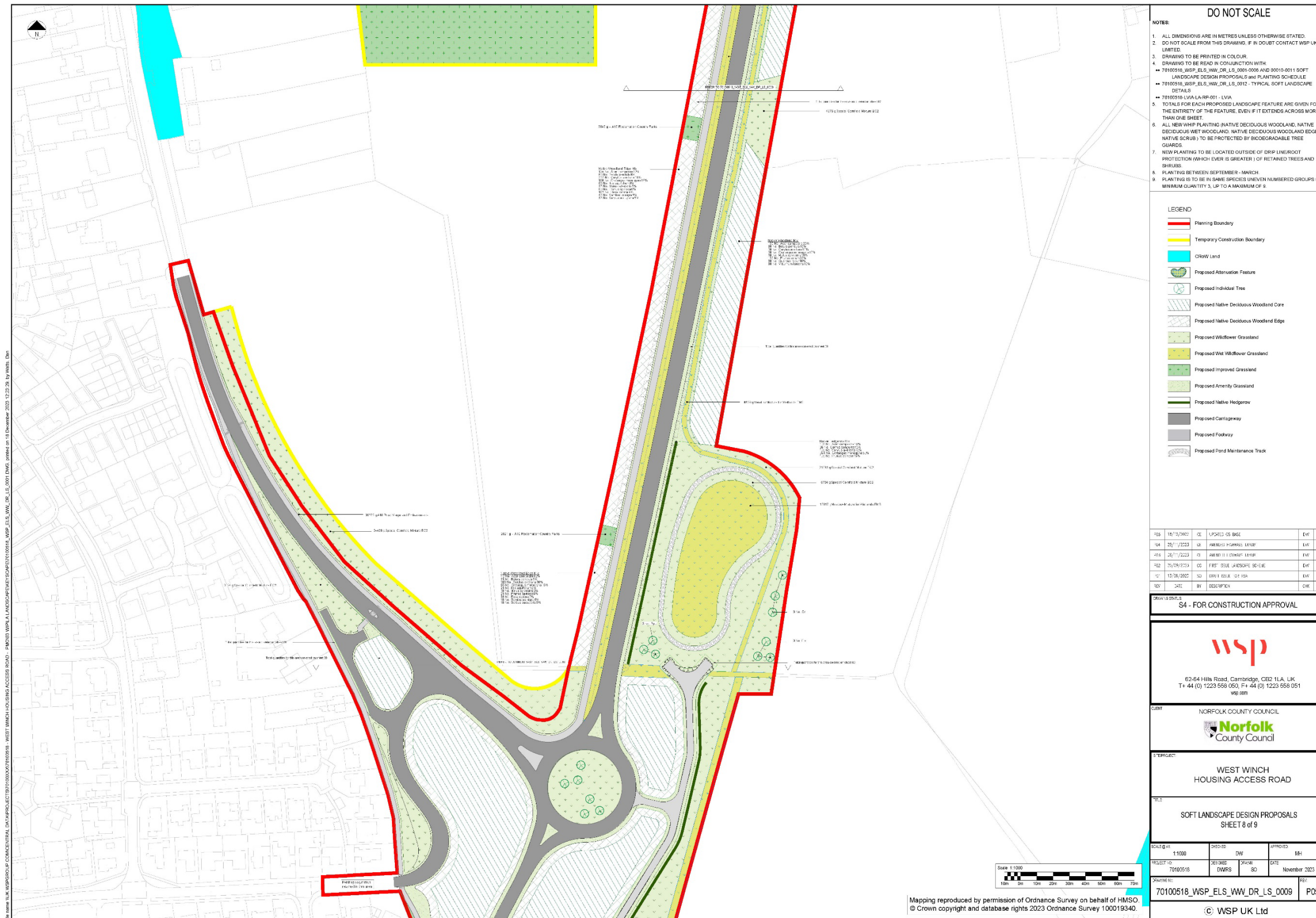


Figure 2-10: Landscape Plan – Sheet 010

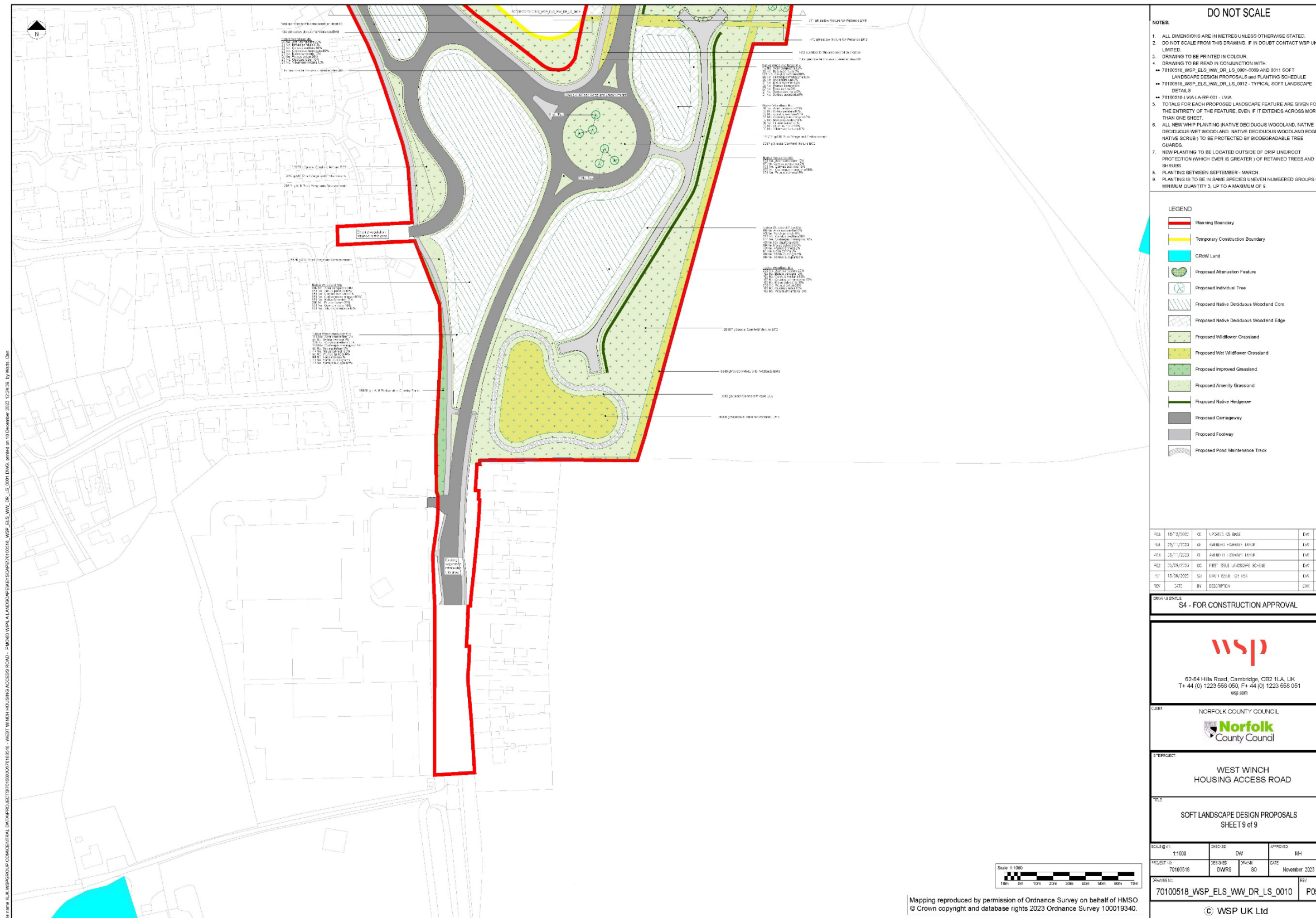


Figure 2-11: Landscape Plan – Sheet 011 – Planting Schedule

SCHEDULE			
Specimen Tree Planting			
Number	Species	Height	Clrth Specification
55	Acer campestre	250-300cm	8-10cm 2x Standard Clear Stem 175-200 .4 brks RB
36	Betula pubescens	250-300cm	8-10cm 2x Standard Clear Stem 175-200 .3 brks RB
25	Fagus sylvatica	250-300cm	8-10cm 2x Standard Clear Stem 175-200 .3 brks RB
27	Quercus petraea	250-300cm	8-10cm 2x Standard Clear Stem 175-200 .3 brks RB
31	Quercus robur	250-300cm	8-10cm 2x Standard Clear Stem 175-200 .3 brks RB
36	Sorbus aucuparia	250-300cm	8-10cm 2x Standard Clear Stem 175-200 .3 brks RB
Total :210			
Native Woodland Core Mix			
Number	Species	Specification	Density
6799	Acer campestre	1+1 Transplant BR 2Ctr	
3406	Betula pendula	1+1 Transplant BR 2Ctr	
3406	Corylus avellana	1+1 Transplant BR 2Ctr	
3406	Crataegus monogyna	1+1 Transplant BR 2Ctr	
3406	Malus sylvestris	1+1 Transplant BR 2Ctr	
6799	Prunus avium	1+1 Transplant BR 2Ctr	
3406	Quercus robur	1+1 Transplant BR 2Ctr	
3406	Viburnum lantana	1+1 Transplant BR 2Ctr	
Total :34044			
Native Woodland Edge Mix			
Number	Species	Specification	Density
3727	Acer campestre	1+1 Transplant BR 1.5Ctr	
1874	Betula pendula	1+1 Transplant BR 1.5Ctr	
9292	Corylus avellana	1+1 Transplant BR 1.5Ctr	
4962	Crataegus monogyna	1+1 Transplant BR 1.5Ctr	
1874	Ilex aquifolium	1+1 Transplant BR 1.5Ctr	
1565	Malus sylvestris	1+1 Transplant BR 1.5Ctr	
1874	Prunus spinosa	1+1 Transplant BR 1.5Ctr	
2803	Rosa canina	1+1 Transplant BR 1.5Ctr	
1565	Sambucus nigra	1+1 Transplant BR 1.5Ctr	
1565	Sorbus aucuparia	1+1 Transplant BR 1.5Ctr	
Total :31101			
Native Wet Woodland Mix			
Number	Species	Specification	Density
1414	Alnus glutinosa	1+1 Transplant BR 2Ctr	
885	Betula pubescens	1+1 Transplant BR 2Ctr	
178	Populus tremula	1+1 Transplant BR 2Ctr	
178	Quercus robur	1+1 Transplant BR 2Ctr	
249	Salix alba	1+1 Transplant BR 2Ctr	
637	Salix cinerea	1+1 Transplant BR 2Ctr	
Total :3541			
Native Scrub Mix			
Number	Species	Specification	Density
642	Cornus sanguinea	1+1 Branched 5/7 brks BR 1Ctr	
642	Corylus avellana	1+1 Branched 5/7 brks BR 1Ctr	
1282	Crataegus monogyna	1+1 Transplant BR 1Ctr	
1069	Prunus spinosa	1+1 Branched 5/7 brks BR 1Ctr	
642	Sambucus nigra	1+1 Branched 5/7 brks BR 1Ctr	
Total :4277			
Native Hedgerow Mix			
Number	Species	Specification	Density
2645	Acer campestre	1+1 Transplant BR 0.4Ctr Double Staggered at 0.6m offset	
884	Cornus sanguinea	1+1 Transplant BR 0.4Ctr Double Staggered at 0.6m offset	
2645	Corylus avellana	1+1 Transplant BR 0.4Ctr Double Staggered at 0.6m offset	
8805	Crataegus monogyna	1+1 Transplant BR 0.4Ctr Double Staggered at 0.6m offset	
2645	Prunus spinosa	1+1 Transplant BR 0.4Ctr Double Staggered at 0.6m offset	
Total :17624			
Grass Areas			
Weight	Seed Mix Name	Density	Seed Mix Supplier
415522 g	Special Corfield Mixture EC2	4g/m ²	Emorsgate
141952 g	Meadow Mixture for Wetlands EM6	4g/m ²	Emorsgate
2622384 g	A16 Reclamation Country Parks	25g/m ²	Germinal Amenity
1247814 g	A16 Road Verge and Embankments	35g/m ²	Germinal Amenity

DO NOT SCALE					
NOTES:					
1. DRAWINGS TO BE READ IN CONJUNCTION WITH: → 70100518_WSP_ELS_WW_DR_LS_001 - 0010 SOFT LANDSCAPE DESIGN PROPOSALS → 70100518_WSP_ELS_WW_DR_LS_002 - LANDSCAPE DETAILS → 70100518_WW_LA-RP-01 - LVA					
2. ALL NEW WHIP PLANTING (NATIVE DECIDUOUS WOODLAND, NATIVE DECIDUOUS WET WOODLAND, NATIVE DECIDUOUS WOODLAND EDGE, NATIVE SCRUB) TO BE PROTECTED BY BIODEGRADABLE TREE GUARDS.					
3. NEW PLANTING TO BE LOCATED OUTSIDE OF DRIP LINE ROOT PROTECTION (WHICH EVER IS GREATER) OF RETAINED TREES AND SHRUBS.					
4. PLANTING BETWEEN SEPTEMBER - MARCH.					
5. PLANTING IS TO BE IN SAME SPECIES UNEVEN NUMBERED GROUPS OF MINIMUM QUANTITY 3, UP TO A MAXIMUM OF 9.					

REV	DATE	BY	DESCRIPTION	CHK	APP
001	18/12/2022	CE	ISSUED FOR BIDS	EW	MH
004	26/11/2023	GA	AMENDED DRAWING LIST	EW	MH
005	26/11/2023	GA	AMENDED DRAWING LIST	EW	MH
002	25/09/2023	CE	FIRST SET OF LANDSCAPE DESIGN	EW	MH
003	17/08/2022	SD	ISSUE FOR LVA	EW	MH
003	24/11/2022	BY	ISSUE FOR LVA	CHK	APP

DRAWING TITLE	
S4 - FOR CONSTRUCTION APPROVAL	
 82-84 Hills Road, Cambridge, CB2 1LA, UK T+44 (0) 1223 558 050, F+44 (0) 1223 558 051 wsp.com	
CLIENT  NORFOLK COUNTY COUNCIL	
PROJECT WEST WINCH HOUSING ACCESS ROAD	
TITLE SOFT LANDSCAPE DESIGN PROPOSALS PLANTING SCHEDULE	
SCALE 1:1	DESIGNED: DW
PROJECT NO: 70100518	APPROVED: MH
DESIGNED BY: DW/RS	DATE: November 2023
DRAWING NO: 70100518_WSP_ELS_WW_DR_LS_001	REV: P05
© WSP UK Ltd	

File name: S:\K:\WSP\RD\IP\CONCENTRAL\DRAWING\PROJECT\70100518\00116 - WEST WINCH HOUSING ACCESS ROAD - 01M030 WPA.A\LANDSCAPE\DESIGN\00116_WSP_ELS_WW_DR_LS_001.DWG, printed on 20 December 2023 10:31:23 by wms. Dwg