



West Winch Housing Access Road Drainage Plans

Author: WSP

Document Reference: 2.08.00

Version Number: 01

Date: December 2023



Contents

1	Introduction	3
1.1	Overview	3

Figures

Figure 1-1	– Proposed drainage catchment plan	4
Figure 1-2	– Drainage strategy keyplan	5
Figure 1-3	– Drainage strategy sheet 1 of 4	6
Figure 1-4	– Drainage strategy sheet 2 of 4	7
Figure 1-5	– Drainage strategy sheet 3 of 4	8
Figure 1-6	– Drainage strategy sheet 4 of 4	9



1 Introduction

1.1 Overview

1.1.1 This set of drawings present surface water drainage strategy for the proposed West Winch Housing Access Road (WWHAR) scheme.

1.1.2 The Drainage Plans comprises six drawing sheets as follows:

- Figure 1-1: Sheet 1 presenting an overview of the scheme with 7 catchment areas, showing the highway areas for which surface water run off is managed by the drainage design.
- Figure 1-2: Sheet 2 is a key plan illustrating the extents of the four drawing sheets that follow
- Figure 1-3 to Figure 1-6: Sheets 4 to 6 present the drainage design including pipe runs, manholes, gulleys, attenuation basins and discharge locations

1.1.3 This drawing shows the indicative highways design, overlaid on Ordinance Survey mapping, with the Red Line Boundary of the Proposed Scheme to show its extents.

1.1.4 These drawings do not show the proposed housing development, or any landscaping associated with the scheme .

Figure 1-1 – Proposed drainage catchment plan

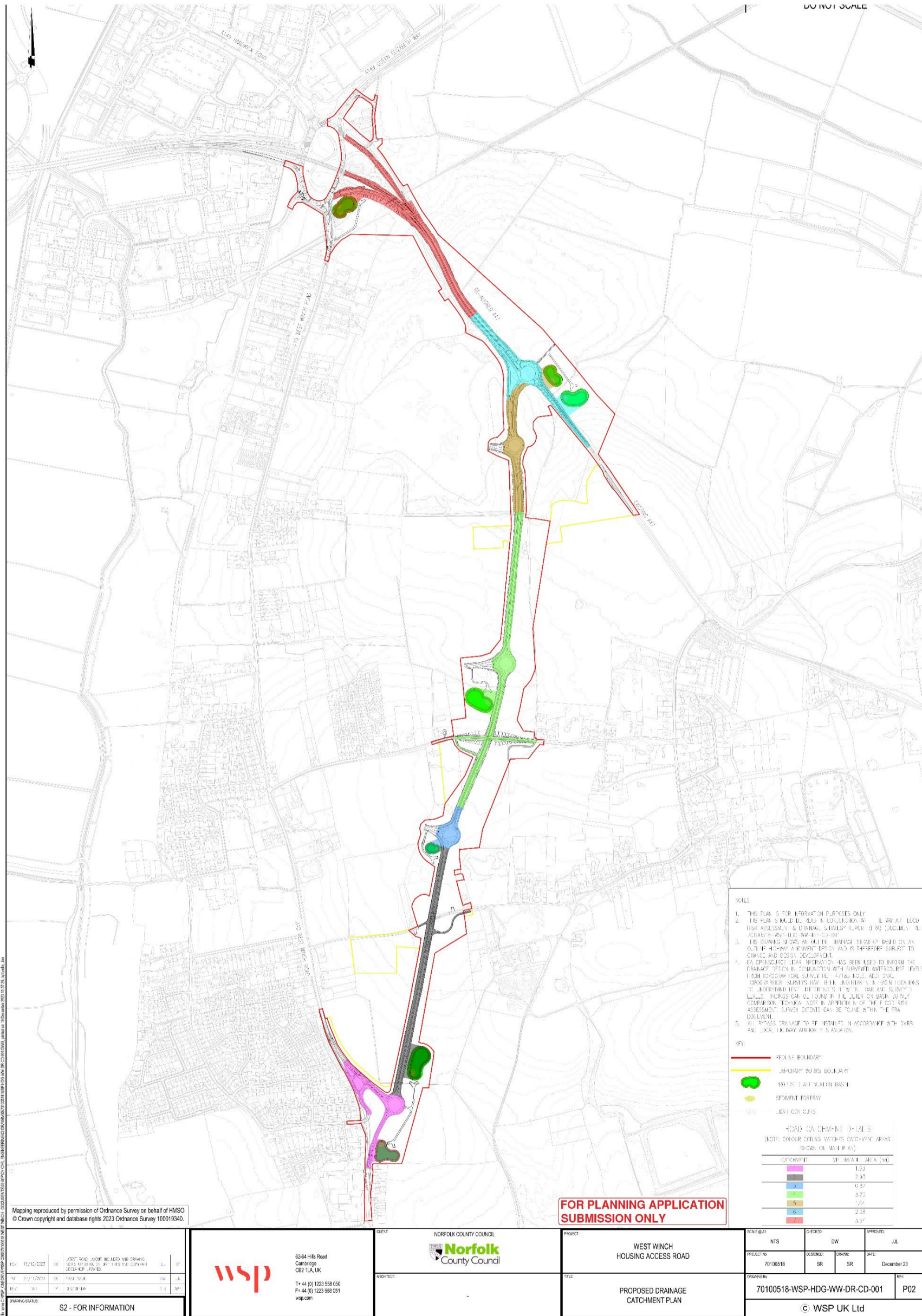


Figure 1-2 – Drainage strategy keyplan

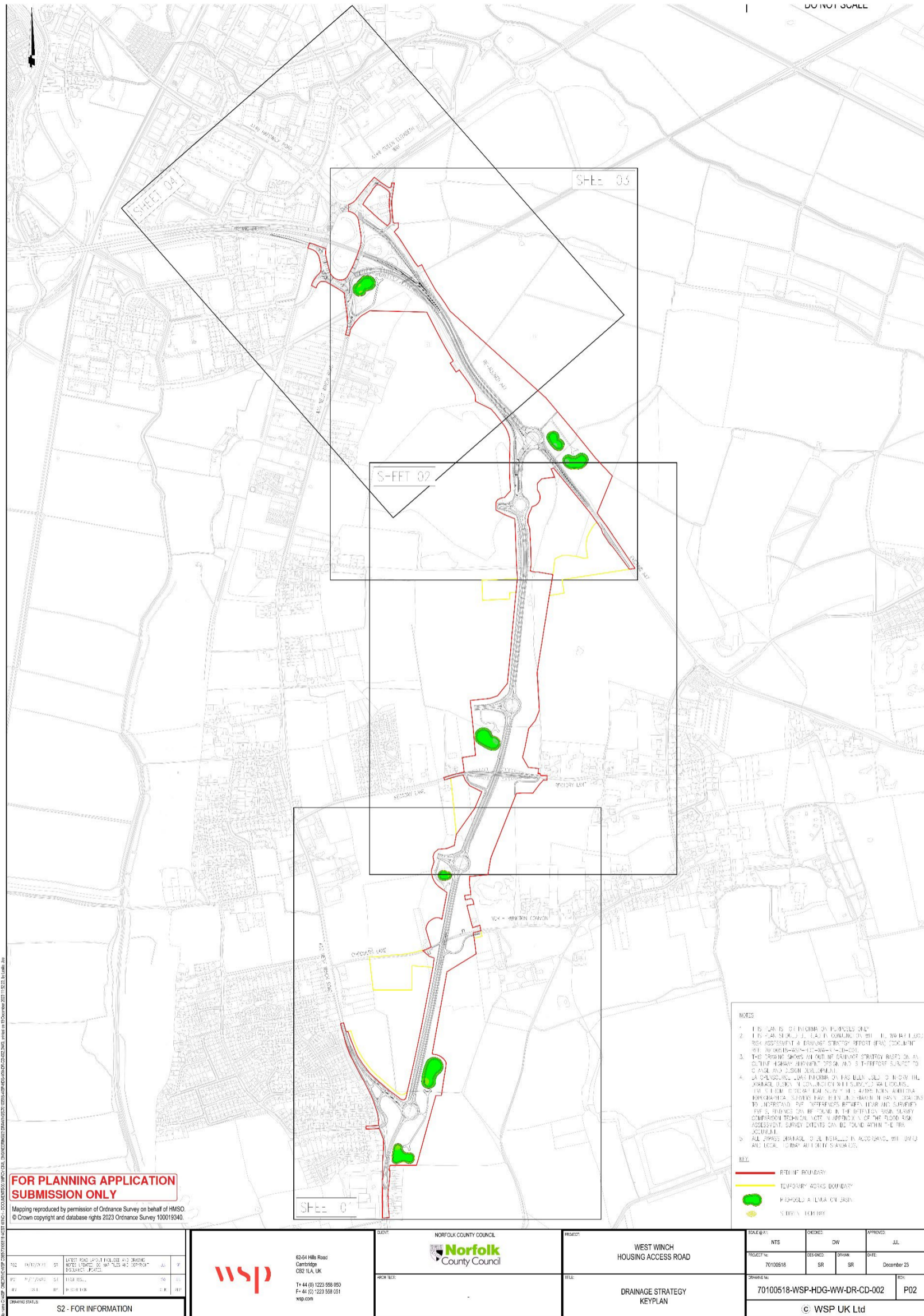


Figure 1-3 – Drainage strategy sheet 1 of 4

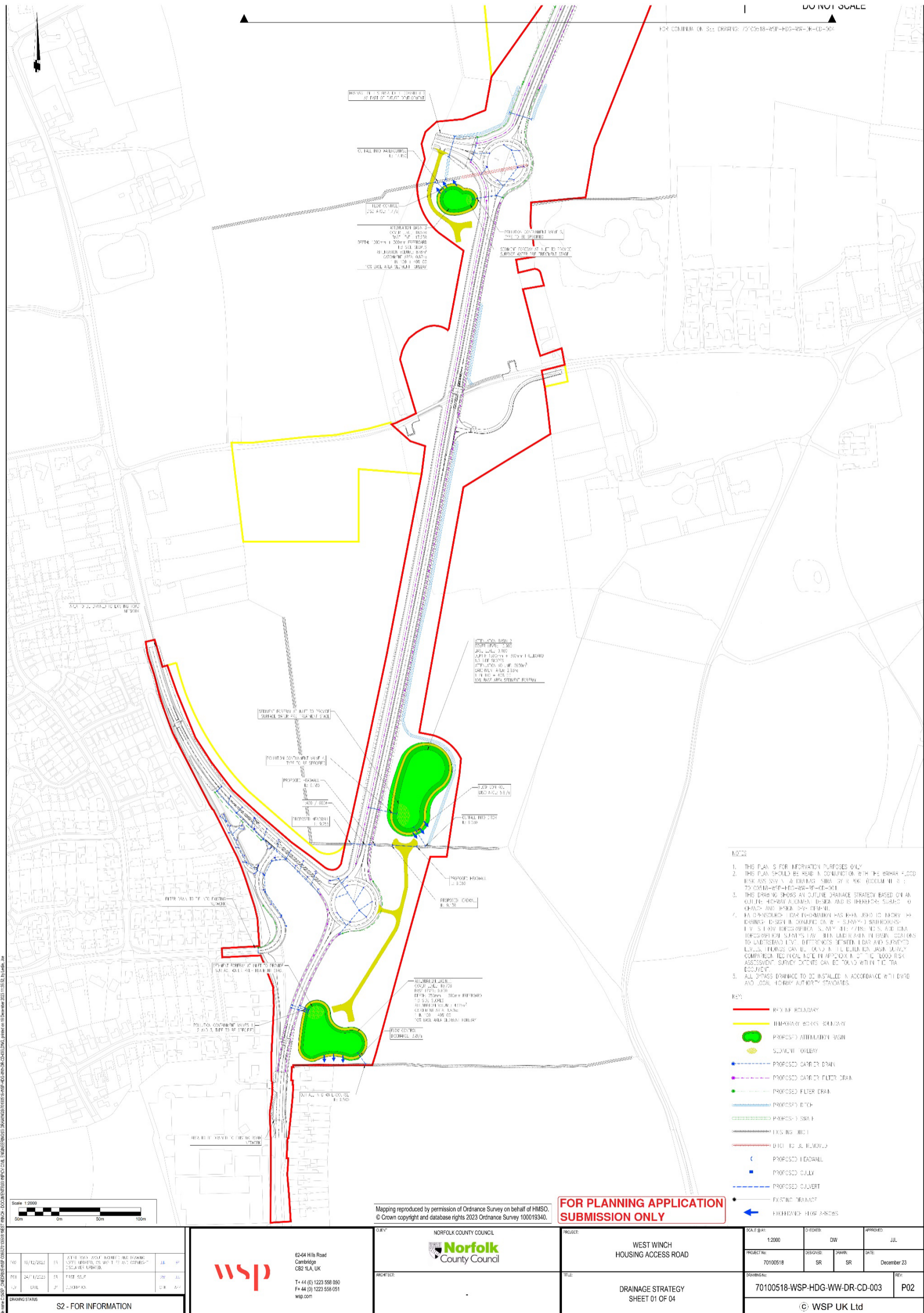


Figure 1-4 – Drainage strategy sheet 2 of 4

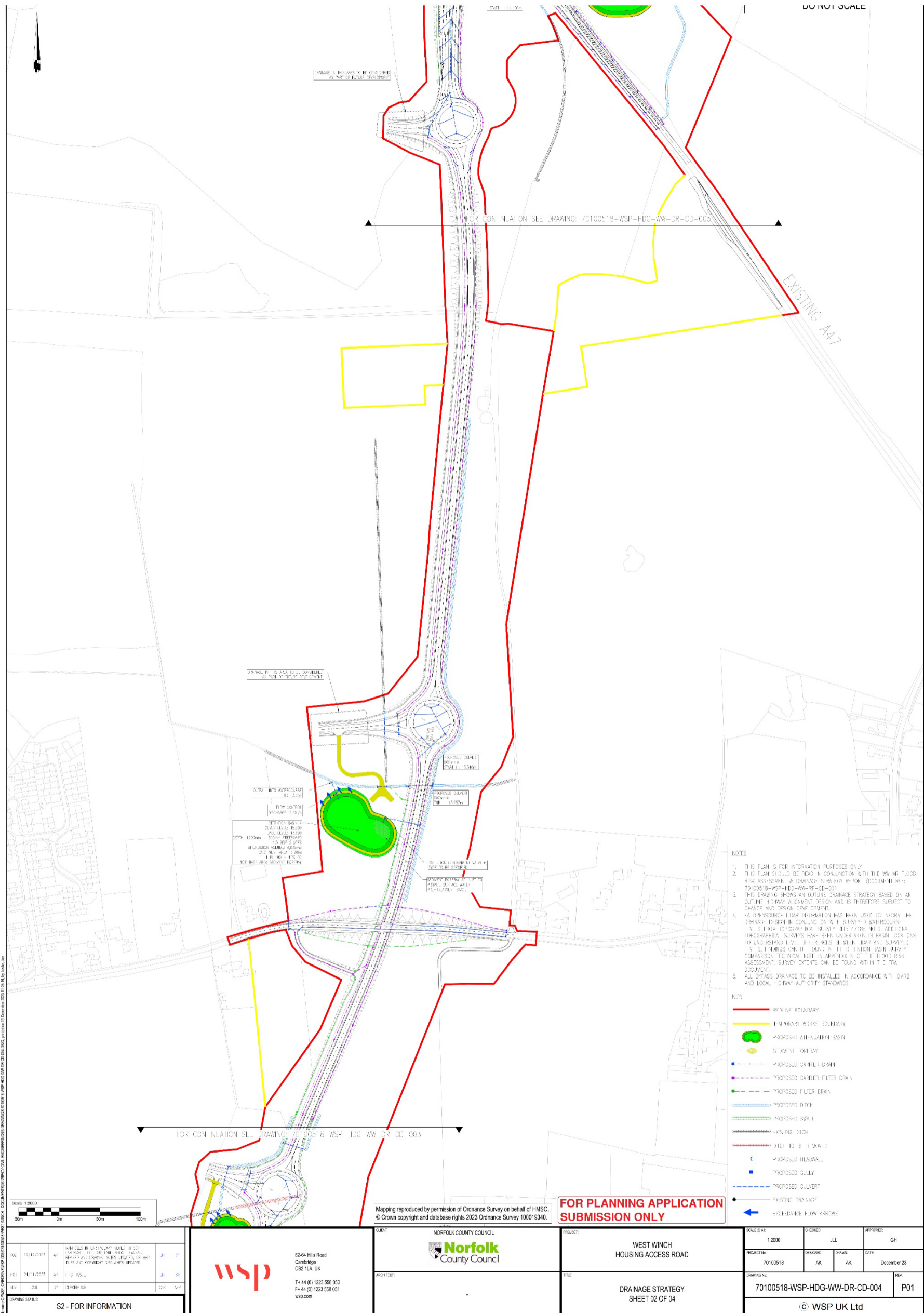


Figure 1-5 – Drainage strategy sheet 3 of 4

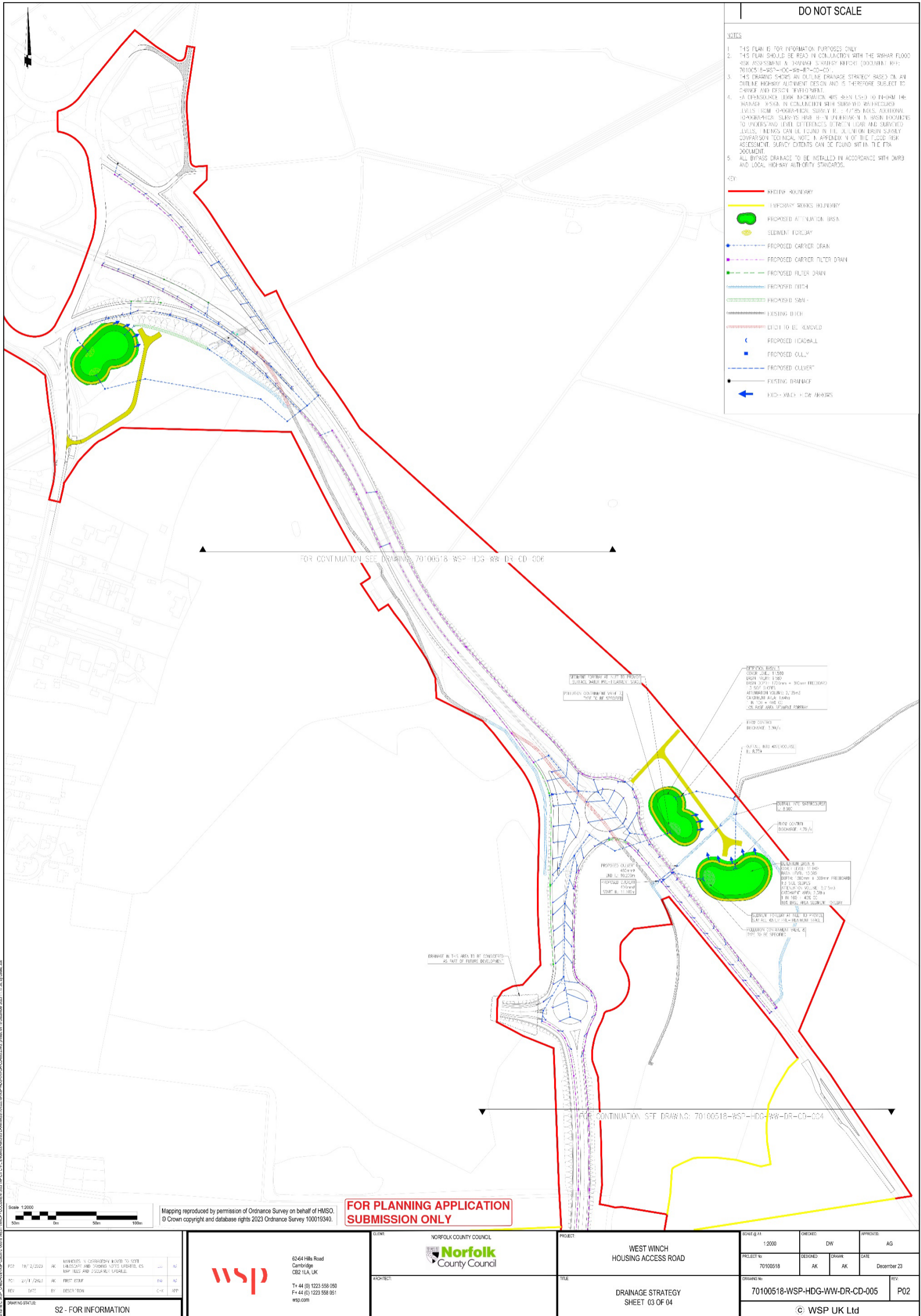


Figure 1-6 – Drainage strategy sheet 4 of 4

