



West Winch Housing Access Road, Arboricultural Impact Assessment. Appendix D: Tree Removals and Protection Plan. Part 2 of 8

Author: WSP

Document Reference: NCC/4.04.04

Version Number: 001

Date: November 2023



Contents

1 Introduction 3

Figures

Figure 1-4 – Tree Removal and Protection Plan – Page 4 of 18 4
Figure 1-5 – Tree Removal and Protection Plan – Page 5 of 18 5
Figure 1-6 – Tree Removal and Protection Plan – Page 6 of 18 6



1 Introduction

- 1.1.1 The below figures provide supporting visual information with regards to the main text of **Appendix 8.17** (Arboricultural Impact Assessment (AIA))
- 1.1.2 The figures all include the outline of the Proposed Scheme, the Proposed Scheme boundary and locations of surveyed arboricultural features. Locations of arboricultural features are sequentially presented in a general south to north direction with each figure.
- 1.1.3 The figures all include the extents of tree removal extents, protective fencing, mitigation areas plus retained tree canopies and Root Protection Areas of each surveyed arboricultural feature.
- 1.1.4 Figures 1-1 to 1-3 are included in part 1 of this document.
- 1.1.5 Figures 1-4 to 1-6 are included in part 2 of this document.
- 1.1.6 Figures 1-7 to 1-9 are included in part 3 of this document.
- 1.1.7 Figures 1-10 to 1-11 are included in part 4 of this document.
- 1.1.8 Figures 1-12 to 1-13 are included in part 5 of this document.
- 1.1.9 Figure 1-14 is included in part 6 of this document.
- 1.1.10 Figures 1-15 to 1-16 are included in part 7 of this document.
- 1.1.11 Figures 1-17 to 1-18 are included in part 8 of this document.

Figure 1-4 – Tree Removal and Protection Plan – Page 4 of 18

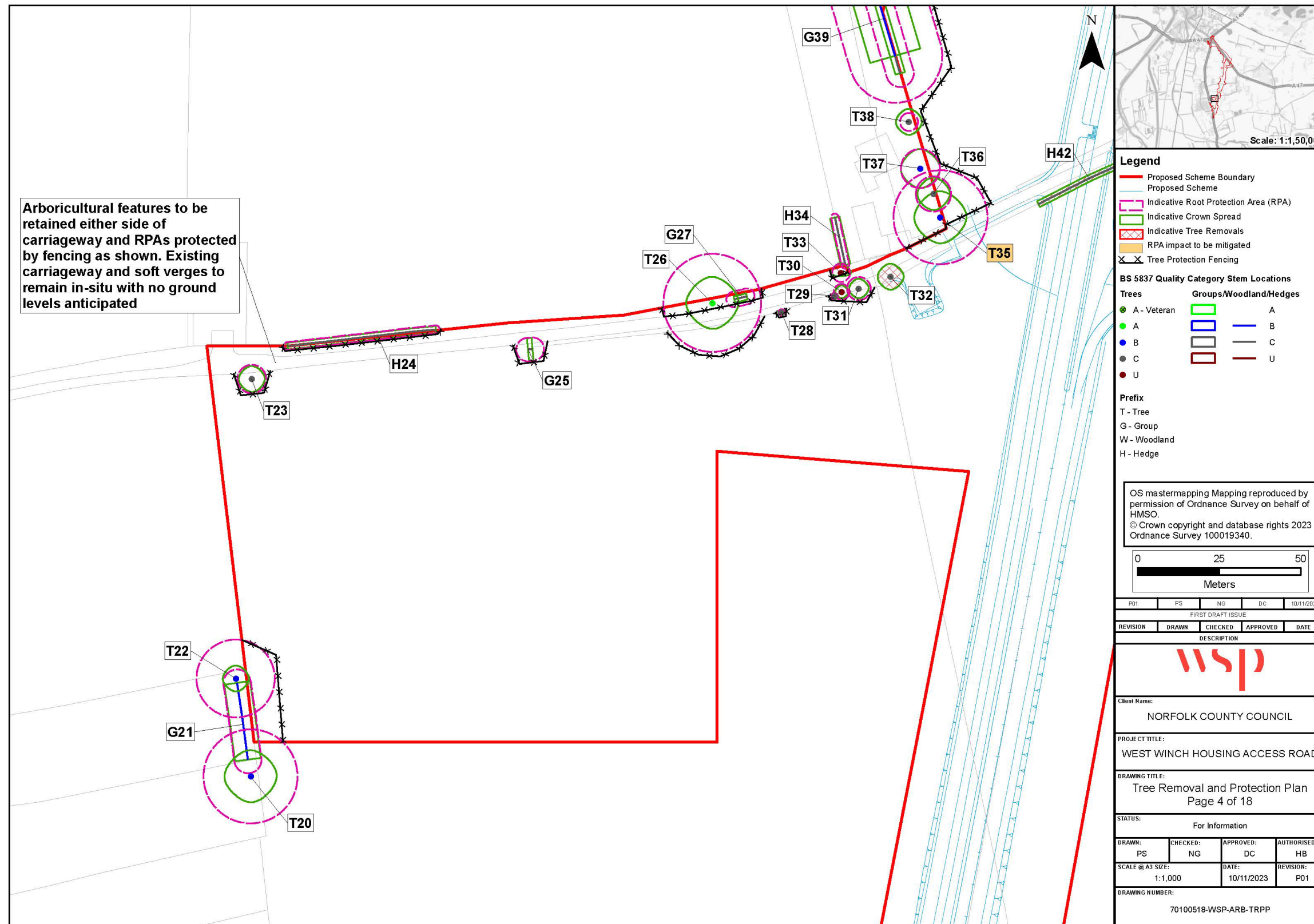


Figure 1-5 – Tree Removal and Protection Plan – Page 5 of 18

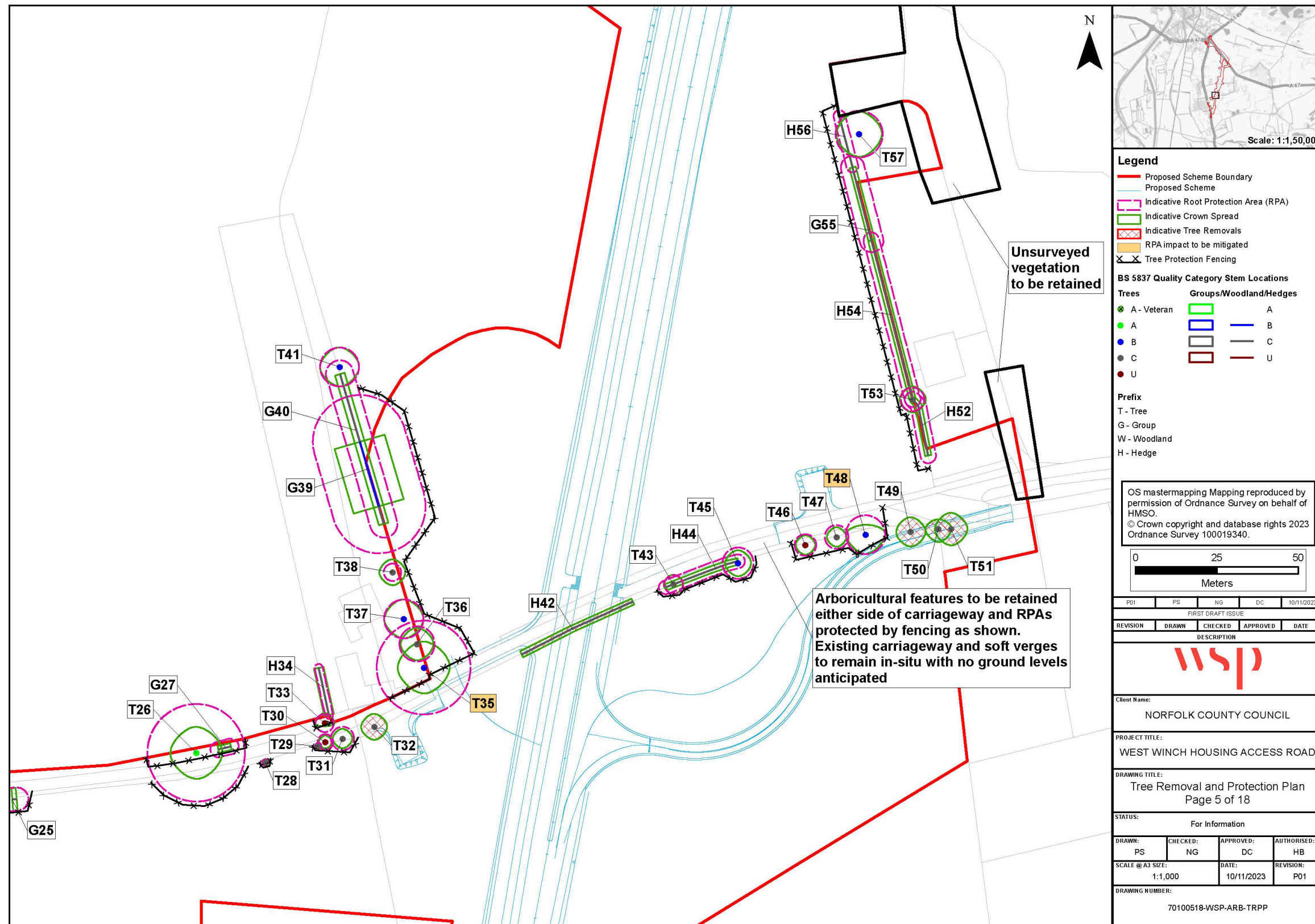


Figure 1-6 – Tree Removal and Protection Plan – Page 6 of 18

