



# **West Winch Housing Access Road**

## **Habitat Regulations Assessment: Appendix 1: Figures**

Author: WSP

Document Reference: NCC/4.03.01

Version Number: 001

Date: October 2023]



## Contents

1	Figures .....	3
---	---------------	---

### Figures

Figure 1.1 – West Winch Housing Access Road Scheme boundary .....	4
Figure 1.2 – Identified National Network Sits within the 10km study area for the impact of habitat fragmentation and loss of functionally linked land (FLL).....	5
Figure 1.3 – West Winch Housing Access Road scenario DS 2027 Affected Road Network (ARN).....	6
Figure 1.4 – West Winch Housing Access Road scenario DS 2042 Affected Road Network (ARN).....	7
Figure 1.5 – Wintering and Breeding Bird Survey Data for bird species classified as Qualifying Features of National Network and Ramsar sites.....	8



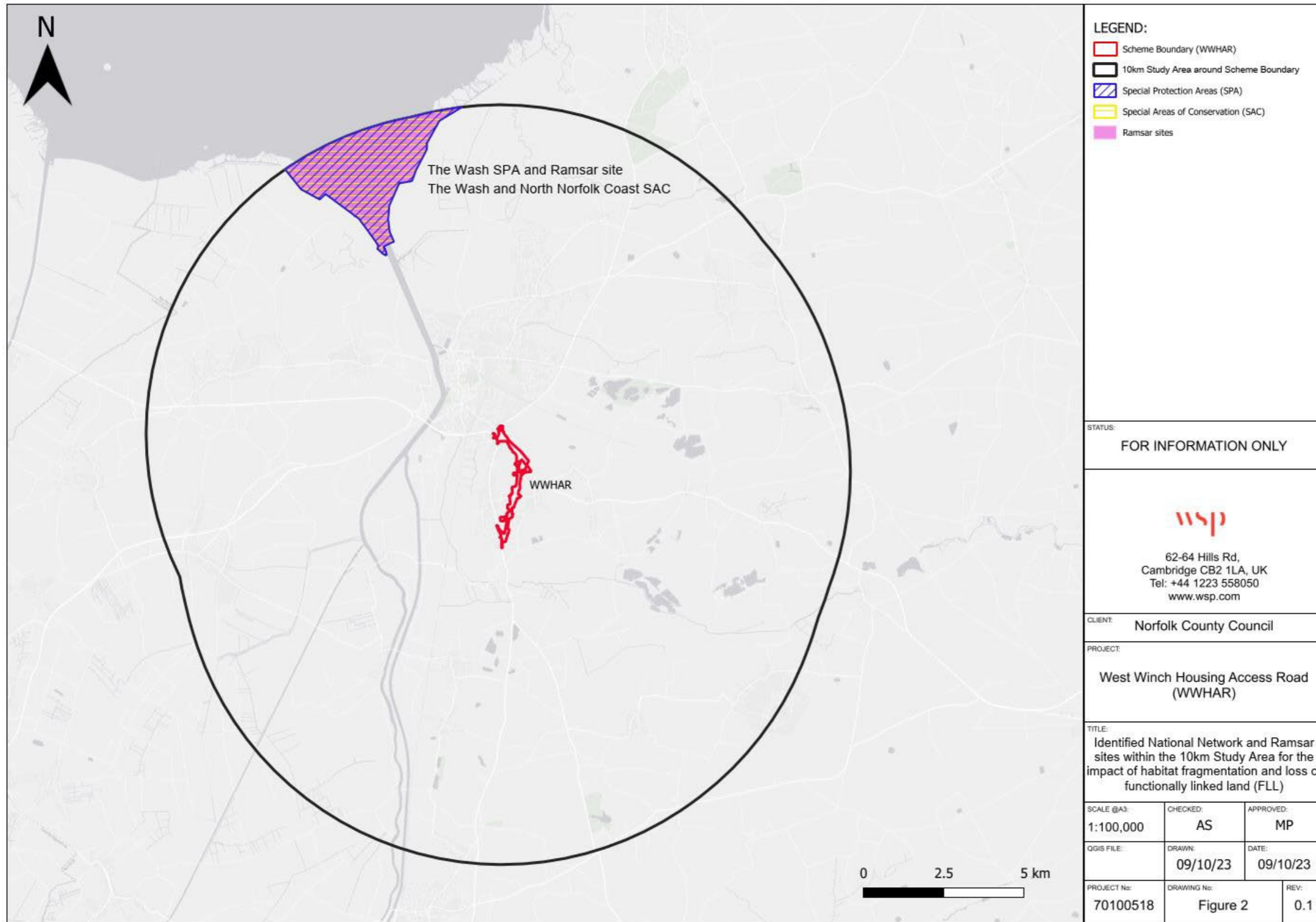
## 1 Figures

- 1.1.1 The accompanying figures to the Habitats Regulations Assessment (HRA) No Significant Effects Report are intended to add depth to the descriptions of the Proposed Scheme, whilst also presenting the findings of the screening exercise.
- 1.1.2 Figure 1.1 shows the boundary of the Proposed Scheme in the context of the wider landscape.
- 1.1.3 Figure 1.2 displays the boundary of the Proposed Scheme, with a 10km buffer as the Study Area, within which The Wash SAC, SPA and Ramsar site are identified as National Network and Ramsar sites for the assessment of the impact of habitat fragmentation and loss of functionally linked land (FLL).
- 1.1.4 Figure 1.3 shows the Proposed Scheme with the Scenario DS 2027 Affected Road Network (ARN) for the assessment of air quality impacts on National Network and/or Ramsar sites. A 200m buffer is displayed around the ARN and no sites fall within the 200m buffer.
- 1.1.5 Figure 1.4 shows the Proposed Scheme with the Scenario DS 2042 ARN for the assessment of air quality impacts on National Network and/or Ramsar sites. A 200m buffer is displayed around the ARN and no sites fall within the 200m buffer.
- 1.1.6 Figure 1.5 displays the wintering and breeding bird survey data for bird species classified as Qualifying Features of National Network and Ramsar sites for the assessment of habitat fragmentation and loss of FLL on mobile bird species from the Proposed Scheme.

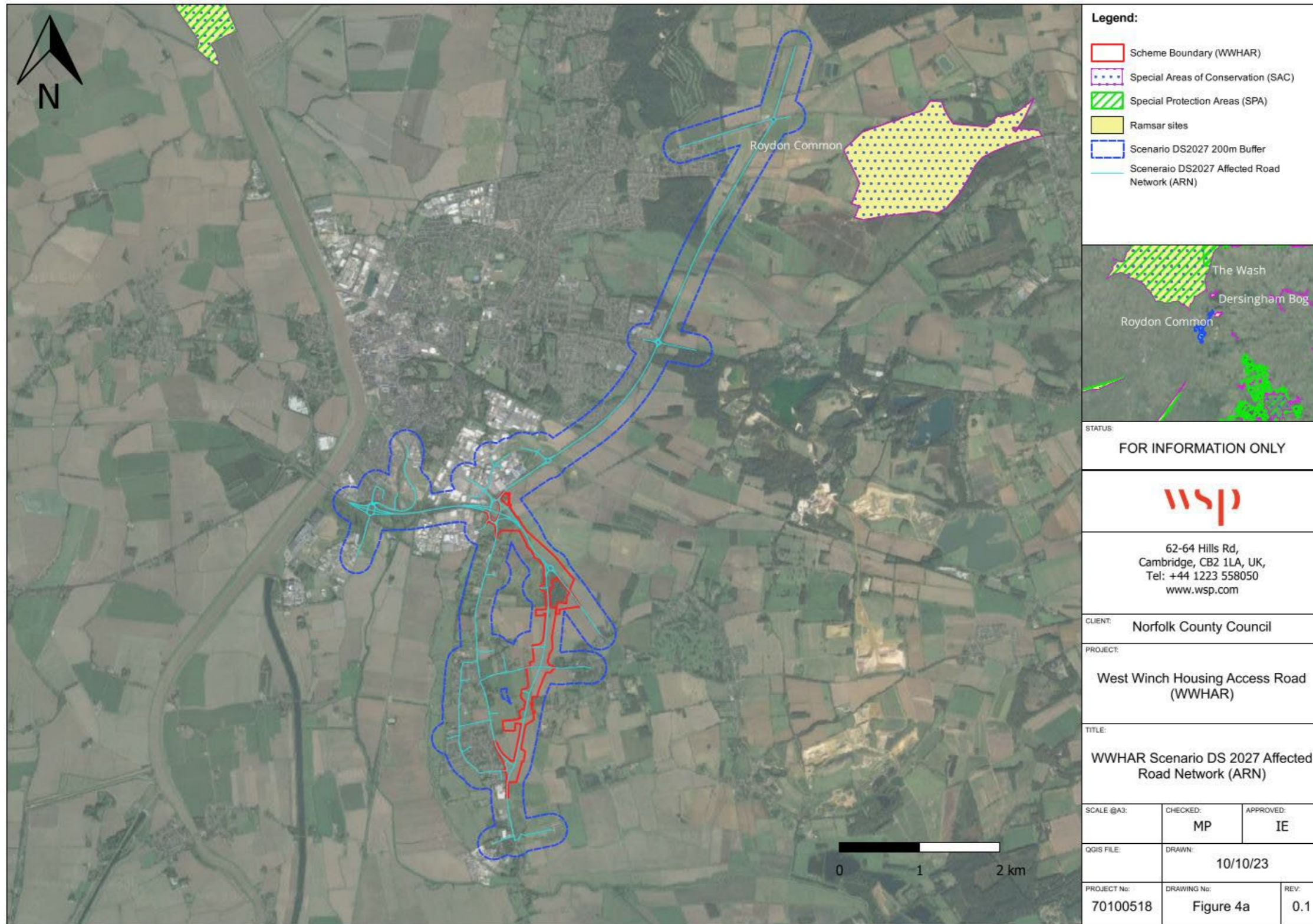
**Figure 1.1 – West Winch Housing Access Road Scheme Boundary**



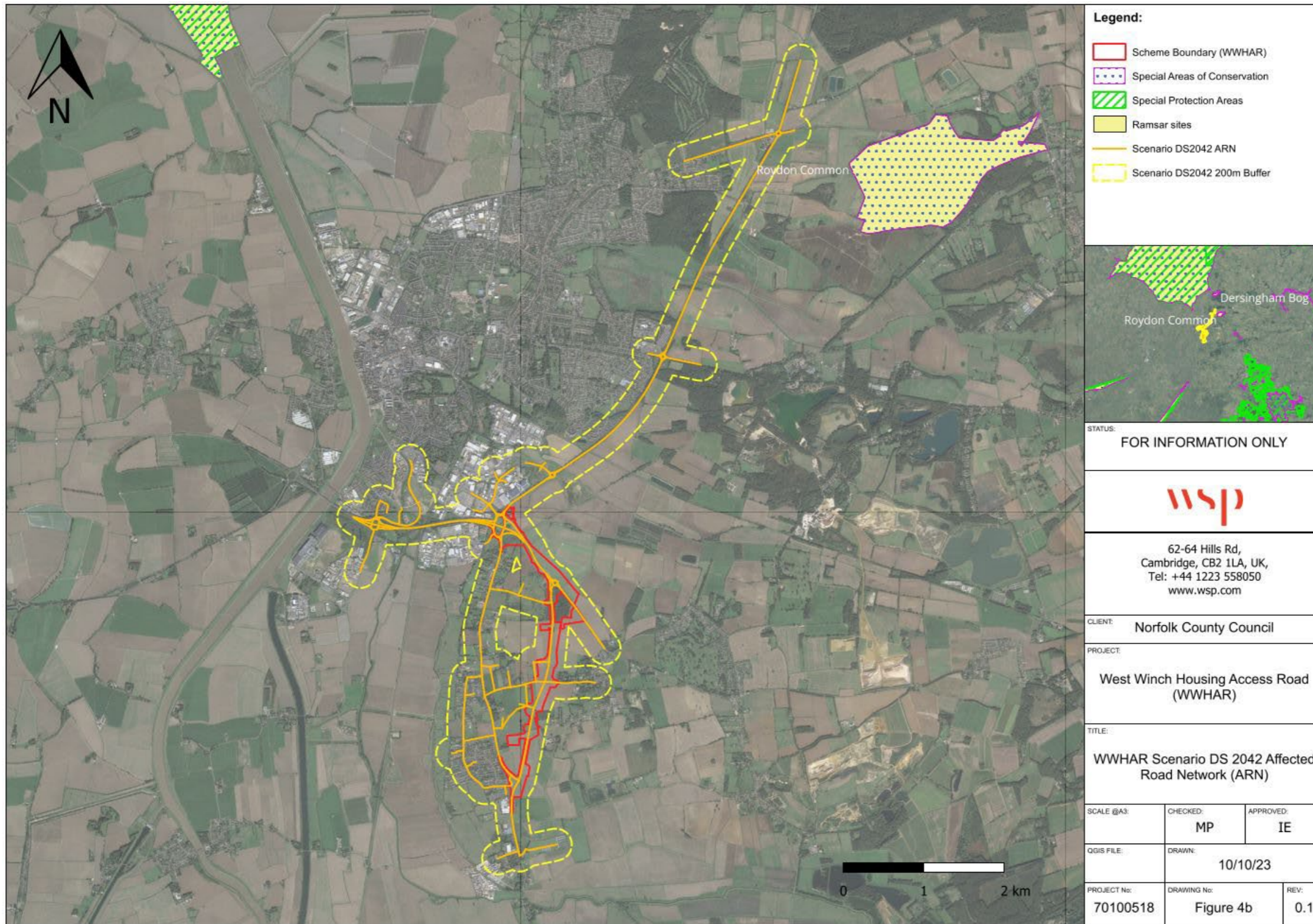
**Figure 1.2 – Identified National Network and Ramsar sites within the 10km study area for the impact of habitat fragmentation and loss of functionally linked land (FLL)**



**Figure 1.3 – West Winch Housing Access Road Scenario DS 2027 Affected Road Network (ARN)**



**Figure 1.4 – West Winch Housing Access Road Scenario DS 2042 Affected Road Network (ARN)**



**Figure 1.5 – Wintering and Breeding Bird Survey Data for bird species classified as Qualifying Features of National Network and Ramsar sites**

