



# **West Winch Housing Access Road**

## **Environmental Statement Chapter 9: Landscape and Visual**

### **Appendix 1: Landscape Figures**

Author: WSP

Document Reference: NCC/3.09.01

Version Number: 001

Date: November 2023



## Contents

1	Introduction .....	3
1.1	Overview .....	3
1.2	Figure 9.1 – Site Location Plan .....	3
1.3	Figure 9.2 – Landscape Character .....	3
1.4	Figure 9.3 – Landscape Designations .....	3
1.5	Figure 9.4 – Topography .....	3
1.6	Figure 9.5 – Zone of Theoretical Visibility and Viewpoint Locations .....	3
1.7	Figure 9.6 - Neighbouring Consented Development .....	4
2	Figures .....	4

## Figures

Figure 9-1: Site Location Plan .....	4
Figure 9-2: Landscape Character.....	5
Figure 9-3: Landscape Designations.....	6
Figure 9-4: Topography.....	7
Figure 9-5: ZTV and Viewpoint Locations .....	8
Figure 9-6: Neighbouring Development.....	9



# 1 Introduction

## 1.1 Overview

1.1.1 This document contains a series of annotated technical plans.

1.1.2 The plans, which are intended to be read in conjunction with the Landscape and Visual Impact Assessment, set out the area of study, local topography, the location and extent of landscape and visual receptors assessed therein. A Zone of Theoretical Visibility (ZTV) and Representative Viewpoint Locations are also defined.

## 1.2 Figure 9.1 – Site Location Plan

1.2.1 Figure 9.1 – sets out the location and extents of the Proposed Scheme and a 2km Study Area.

## 1.3 Figure 9.2 – Landscape Character

1.3.1 Figure 9.2 - sets out the extents of Landscape Character Areas within the Study Area at national and local scales.

## 1.4 Figure 9.3 – Landscape Designations

1.4.1 Figure 9.3 sets out Planning Designations and landscape and heritage features, such as Public Rights of Way, listed buildings and scheduled monuments within the 2km Study Area.

## 1.5 Figure 9.4 – Topography

1.5.1 Figure 9.4 uses a colour ramp to illustrate the landform within the Study Area.

## 1.6 Figure 9.5 – Zone of Theoretical Visibility and Viewpoint Locations

1.6.1 Figure 9.5 sets out the ZTV, to illustrate where the Proposed Scheme is likely to be visible from.



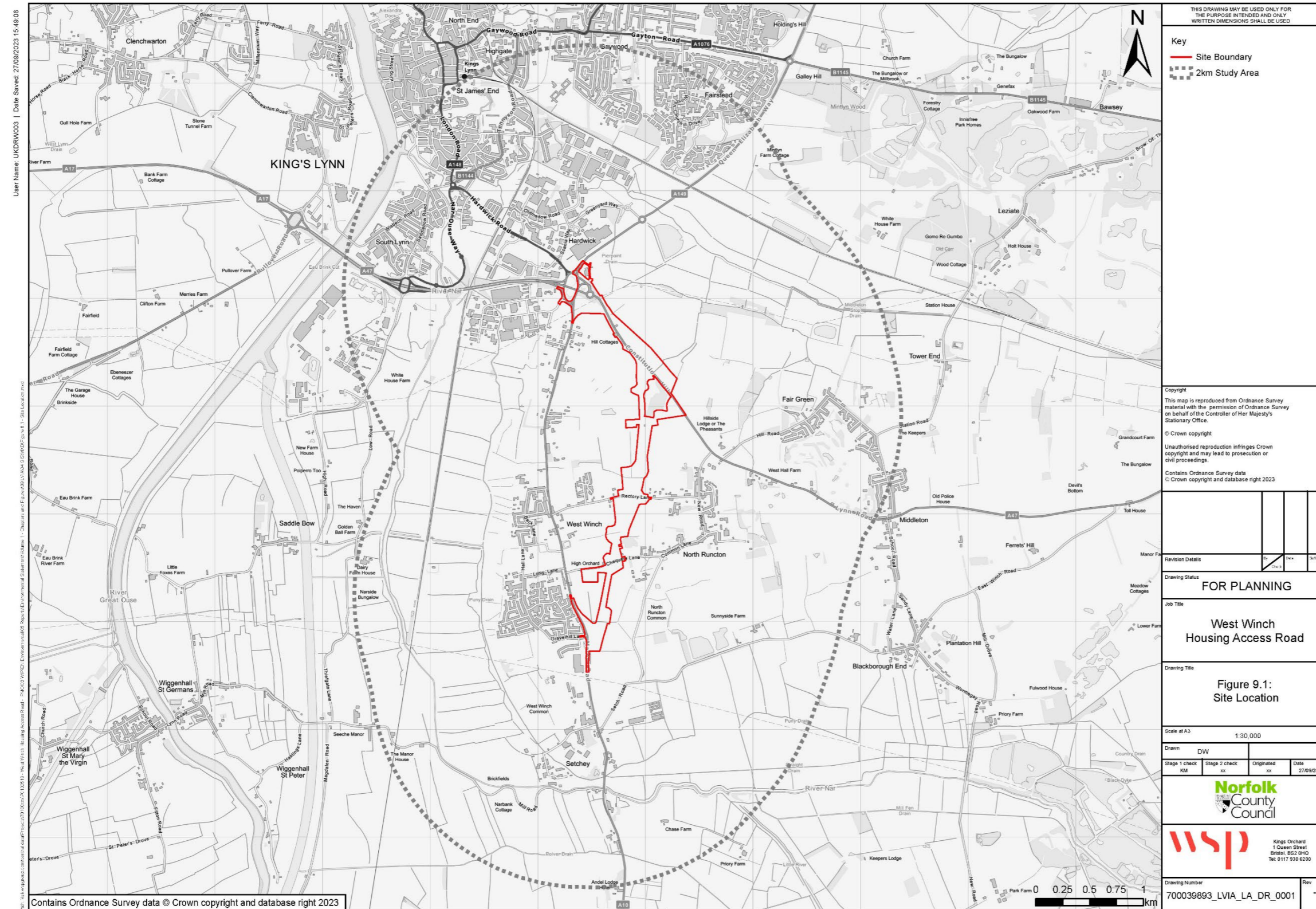
## **1.7 Figure 9.6 - Neighbouring Consented Development**

1.7.1 Figure 9.6 sets out the extents of the neighbouring consented housing development associated with the West Winch Growth Area.

## **2 Figures**

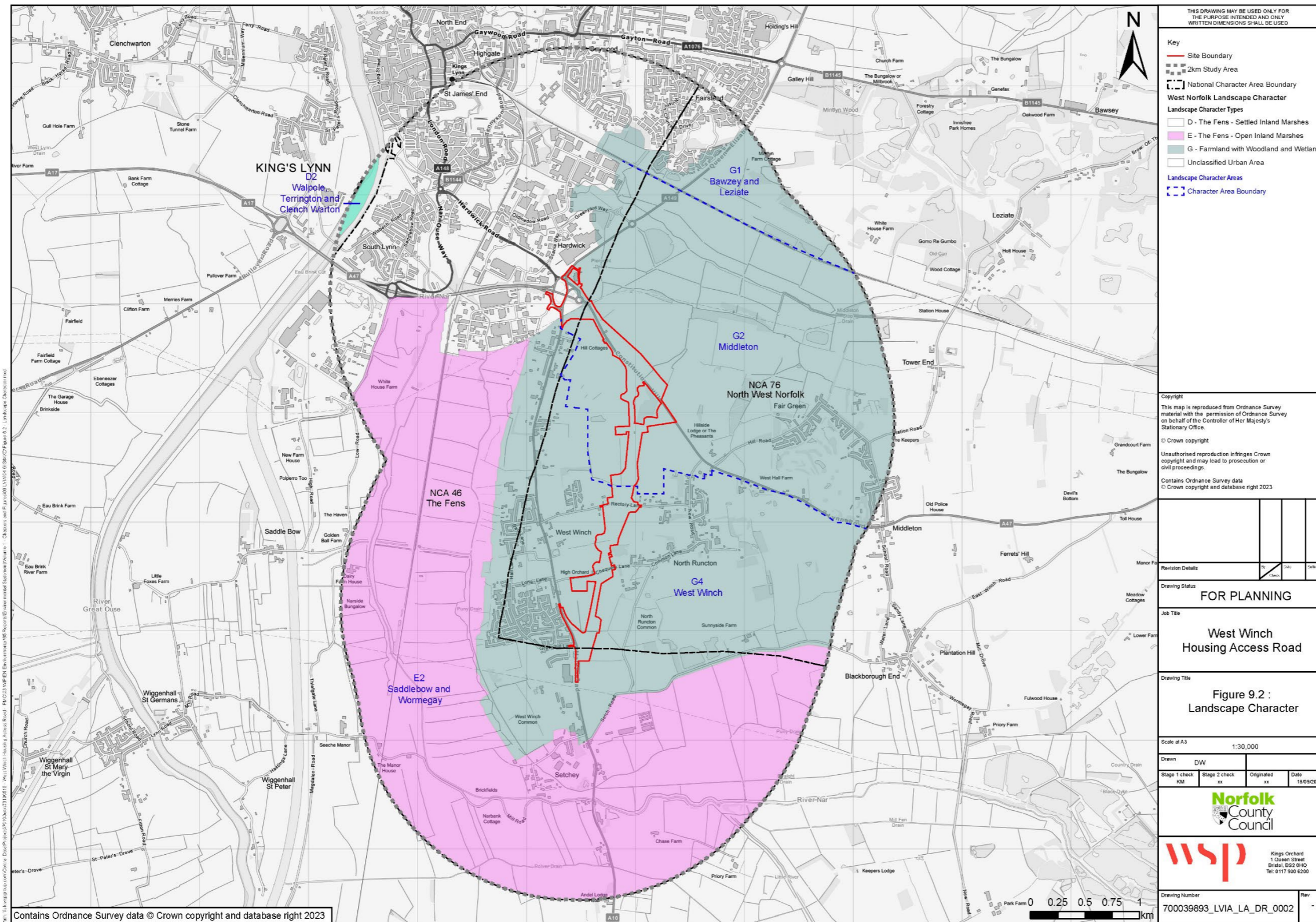
2.1.1 The figures described above are provided on the following pages.

**Figure 9-1: Site Location Plan**



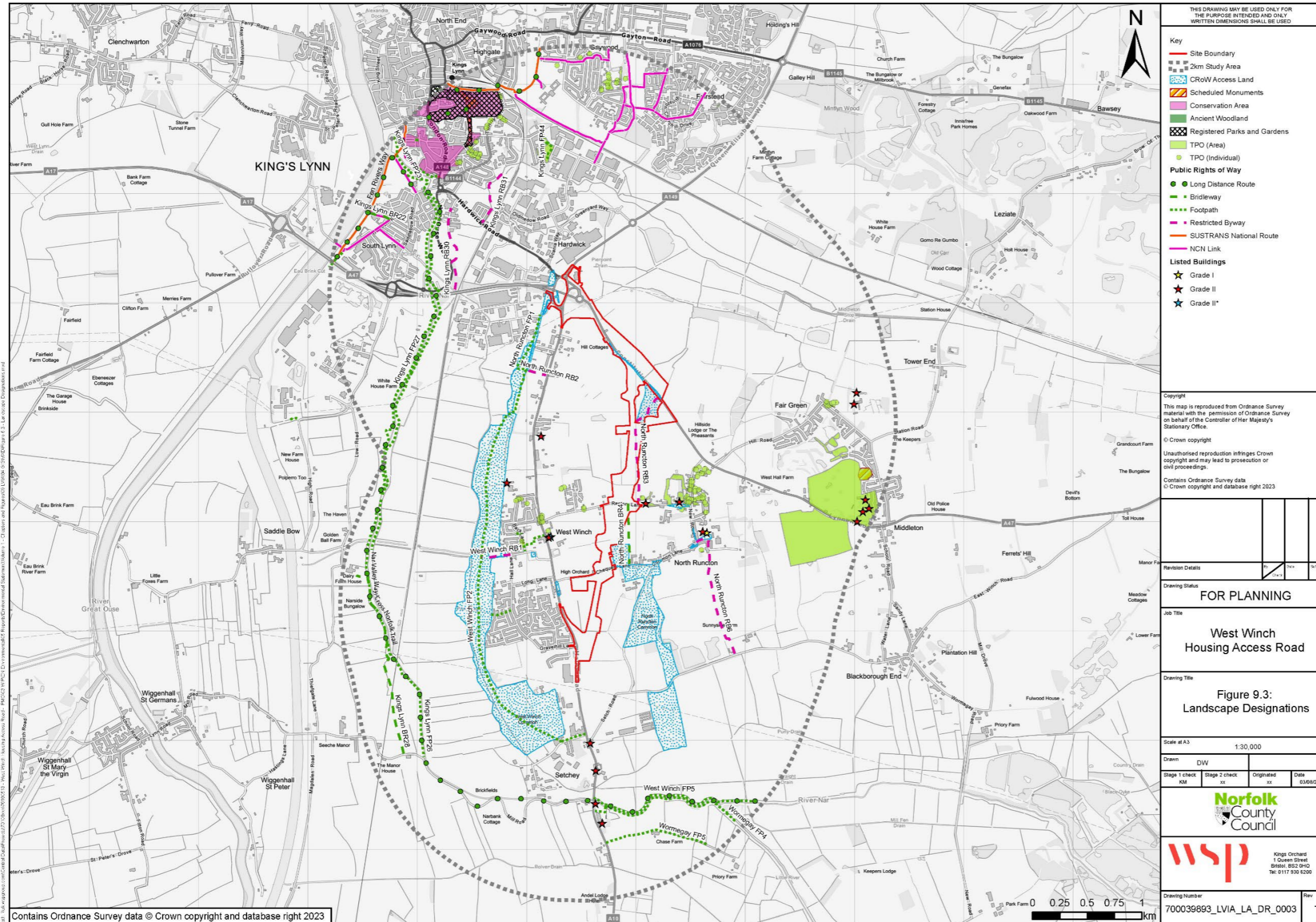


**Figure 9-2: Landscape Character**



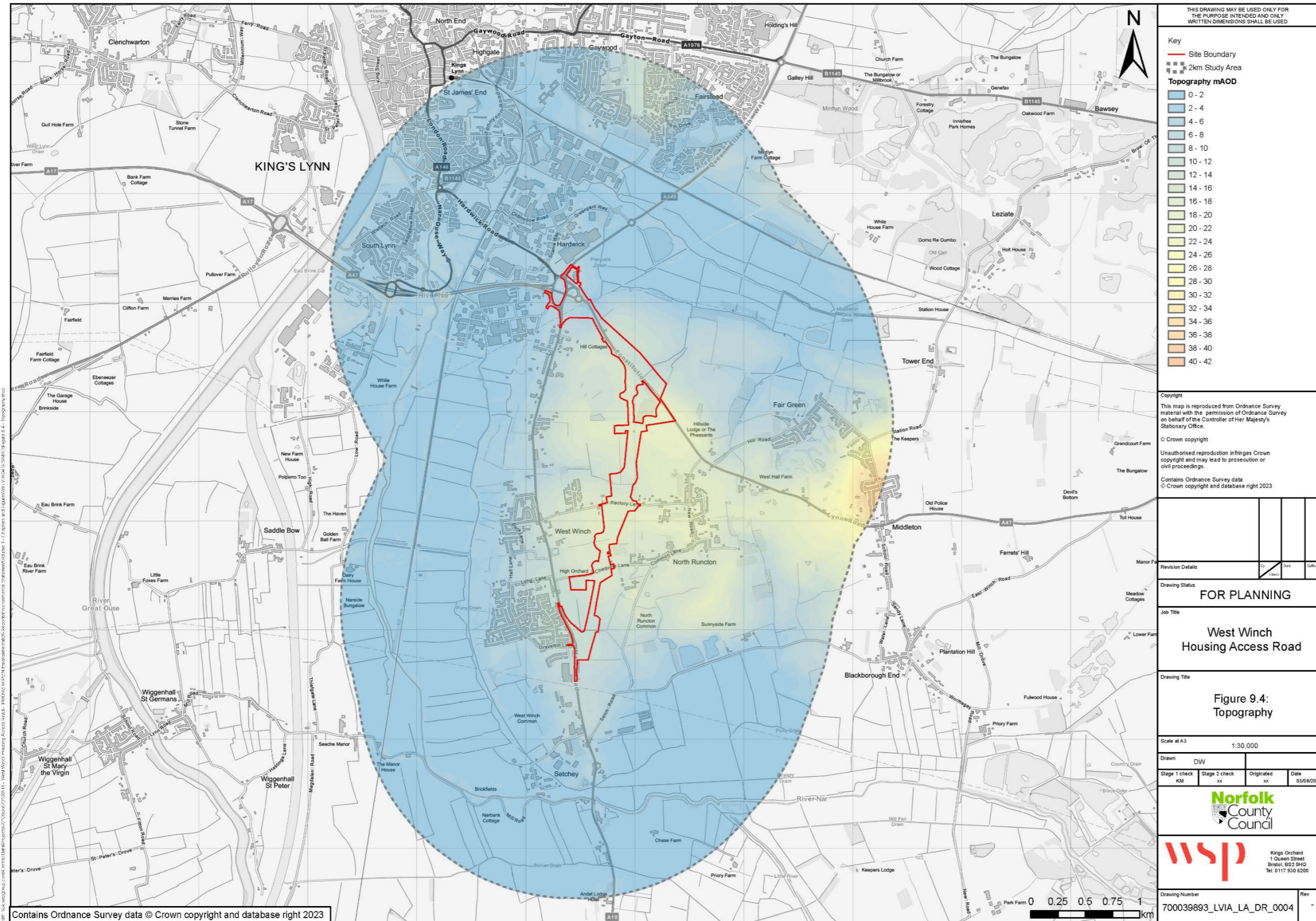


**Figure 9-3: Landscape Designations**



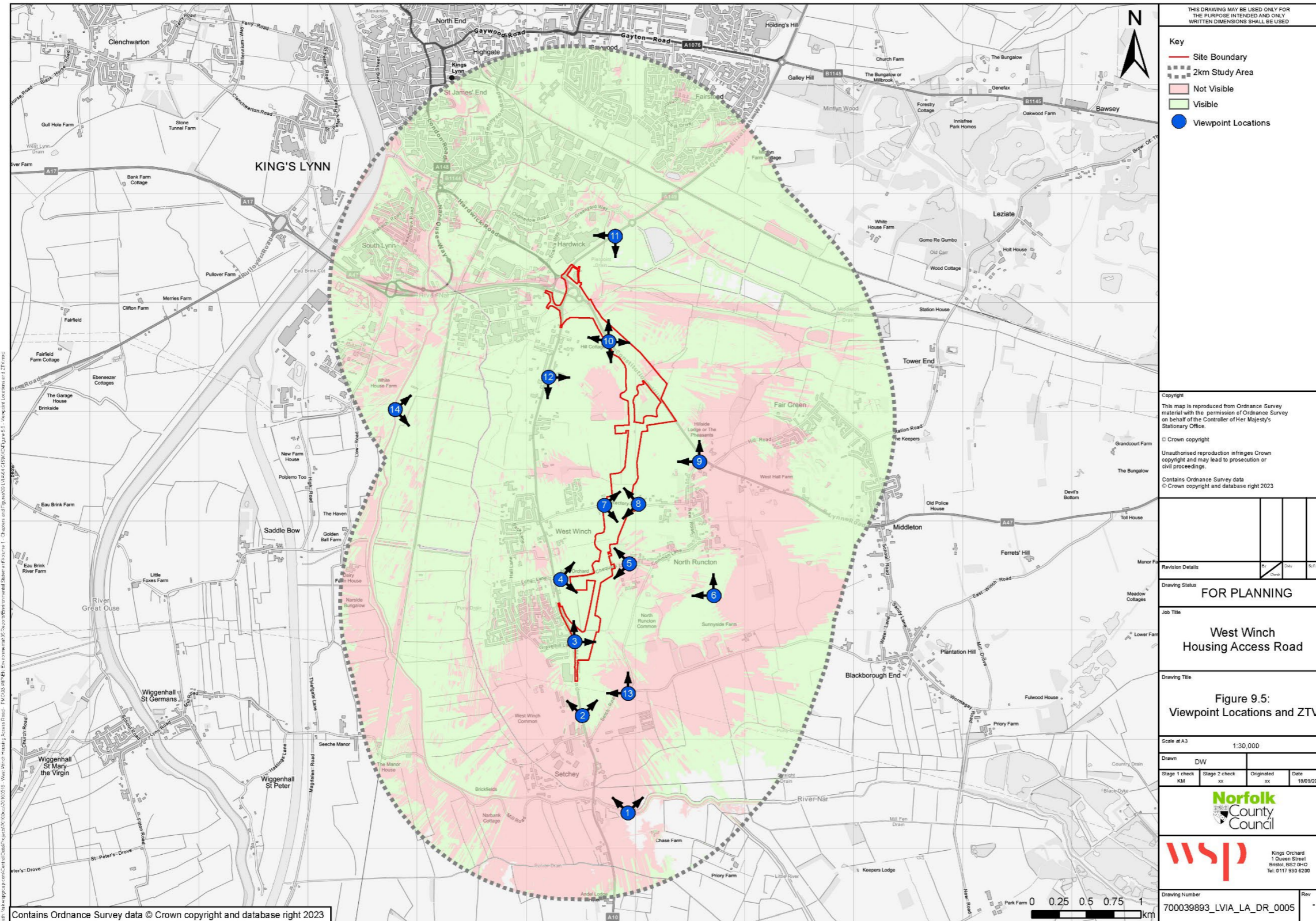


**Figure 9-4: Topography**





**Figure 9-5: ZTV and Viewpoint Locations**





**Figure 9-6: Neighbouring Development**

