



# **West Winch Housing Access Road**

## **Environmental Statement Chapter 8: Annex 8.7 Breeding Bird Survey Report: Appendix K**

Author: WSP

Document Reference: NCC/3.08.11k

Version Number: 01

Date: November 2023



## Contents

1 Introduction ..... 3

### Figures

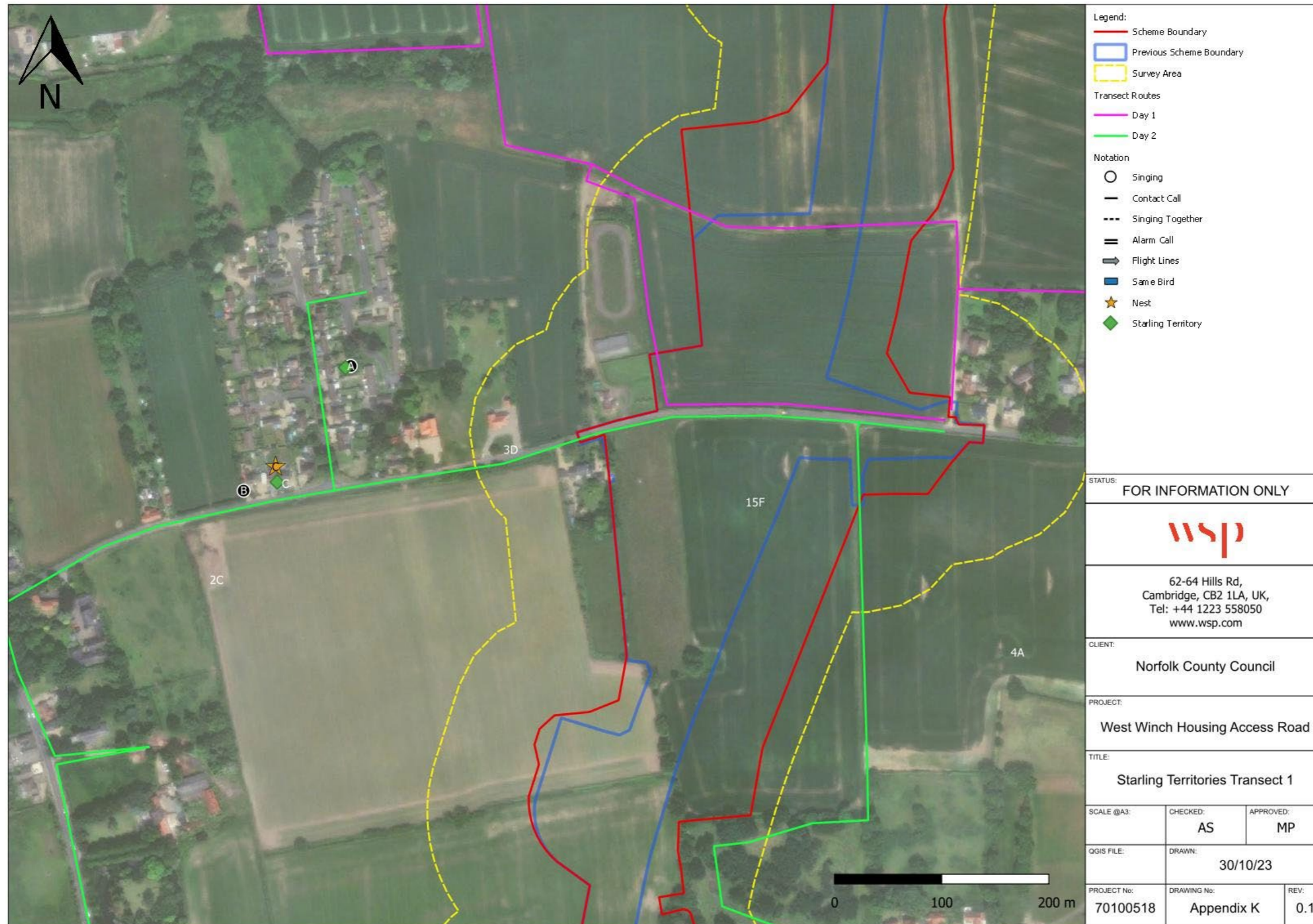
Figure 1-1 – Starling territories ..... 4  
Figure 1-2 – Starling territories ..... 5  
Figure 1-3 – Starling territories ..... 6  
Figure 1-4 – Starling territories ..... 7



## **1 Introduction**

1.1.1 Figures 1-1, 1-2, 1-3 and 1-4 are maps showing the Scheme Boundaries, survey area and Starling territories.


**Figure 1-1 – Starling territories**





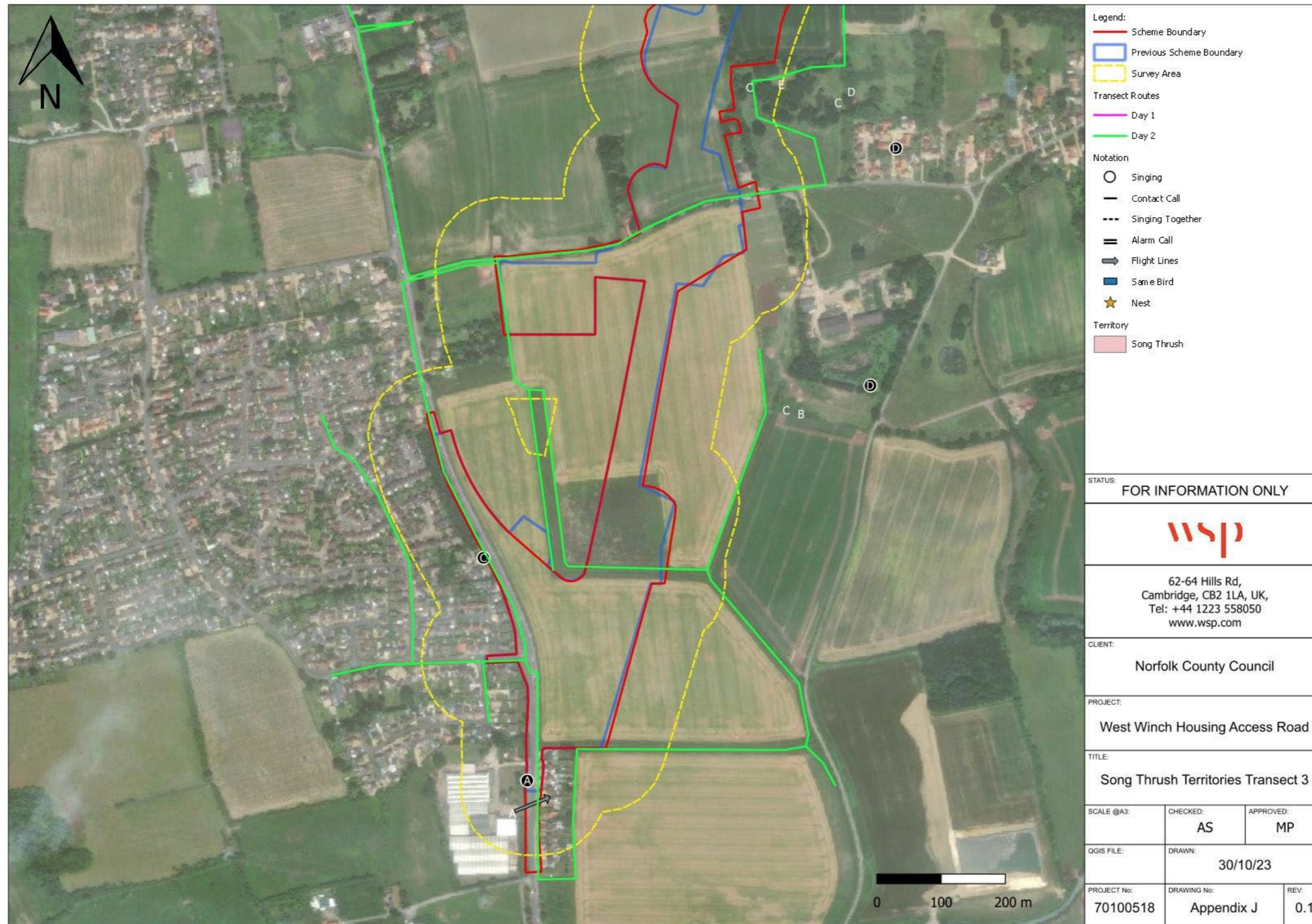
**Figure 1-2 – Starling territories**



<b>Legend:</b> — Scheme Boundary □ Previous Scheme Boundary - - - Survey Area <b>Transect Routes</b> — Day 1 — Day 2 <b>Notation</b> ○ Singing — Contact Call - - - Singing Together = Alarm Call ⇨ Flight Lines ■ Same Bird ★ Nest ◆ Starling Territory		
STATUS: FOR INFORMATION ONLY		
		
62-64 Hills Rd, Cambridge, CB2 1LA, UK, Tel: +44 1223 558050 www.wsp.com		
CLIENT: Norfolk County Council		
PROJECT: West Winch Housing Access Road		
TITLE: Starling Territories Transect 2		
SCALE @A3:	CHECKED: AS	APPROVED: MP
QGIS FILE:	DRAWN: 30/10/23	
PROJECT No: 70100518	DRAWING No: Appendix K	REV: 0.1



**Figure 1-3 – Starling territories**





**Figure 1-4 – Starling territories**

