



West Winch Housing Access Road

Environmental Statement Chapter 8: Biodiversity Annex 8.16 Bat Crossing Point Survey Report Appendix A Figures

Author: WSP

Document Reference: NCC/3.08.17a

Version Number: 01

Date: December 2023



Contents

1 Introduction 3

Figures

Figure 1-1 Bat Crossing Point Surveyor and Linear feature Locations - North..... 4

Figure 1-2 Bat Crossing Point Surveyor and Linear feature Locations - South 5



1 Introduction

1.1.1 Figure 1-1 and Figure 1-2 show the Scheme Boundaries, crossing point linear features and crossing point surveyor locations.

Figure 1-1 Bat Crossing Point Surveyor and Linear feature Locations - North

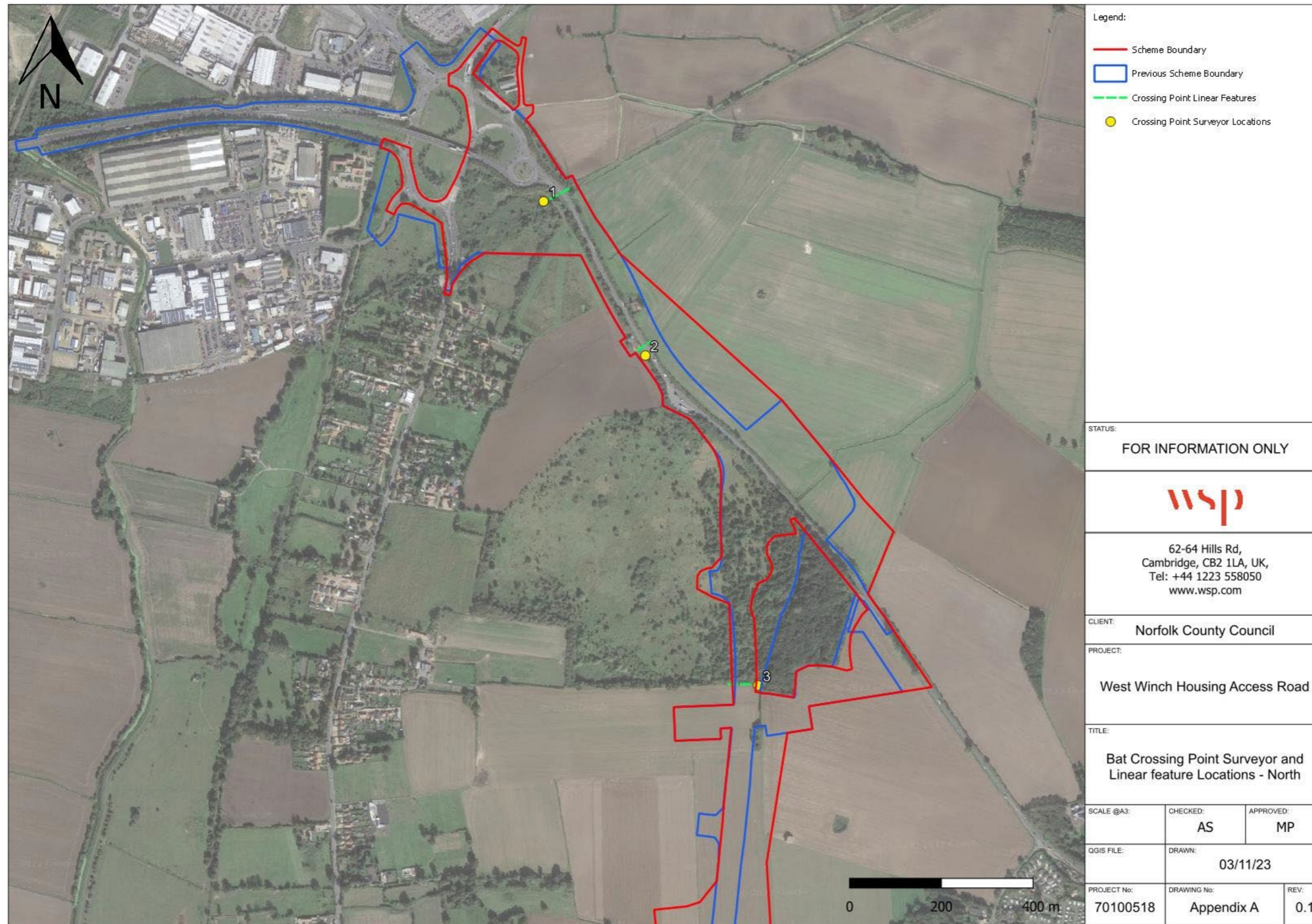


Figure 1-2 Bat Crossing Point Surveyor and Linear feature Locations - South



<p>Legend:</p> <ul style="list-style-type: none"> — Scheme Boundary — Previous Scheme Boundary - - - Crossing Point Linear Features ● Crossing Point Surveyor Locations 		
<p>STATUS:</p> <p style="text-align: center;">FOR INFORMATION ONLY</p>		
		
<p>62-64 Hills Rd, Cambridge, CB2 1LA, UK, Tel: +44 1223 558050 www.wsp.com</p>		
<p>CLIENT: Norfolk County Council</p>		
<p>PROJECT: West Winch Housing Access Road</p>		
<p>TITLE: Bat Crossing Point Surveyor and Linear feature Locations - South</p>		
SCALE @A3:	CHECKED: AS	APPROVED: MP
QGIS FILE:	DRAWN: 03/11/23	
PROJECT No: 70100518	DRAWING No: Appendix A	REV: 0.1