



# **West Winch Housing Access Road**

## **Environmental Statement Chapter 7: Appendix 7.2: WSI for archaeological works: Appendix C: Figures**

Author: WSP

Document Reference: NCC/3.07.02c

Version Number: 001

Date: October 2023



## Contents

1 Figures ..... 3

### Figures

Figure 1.1 – Site location plan ..... 4

Figure 1.2 – Proposed trench plan ..... 5

Figure 1.3 – Location of site access routes and public rights of way ..... 6

Figure 1.4 – Location of proposed trenches and location of known utilities ..... 7

Figure 1.5 – Location of proposed trenches and location of known utilities ..... 8

Figure 1.6 – Location of proposed trenches and location of known utilities ..... 9

Figure 1.7 – Location of proposed trenches and location of known utilities ..... 10

Figure 1.8 – Location of proposed trenches and location of known utilities ..... 11

Figure 1.9 – Location of proposed trenches and known location of utilities ..... 12

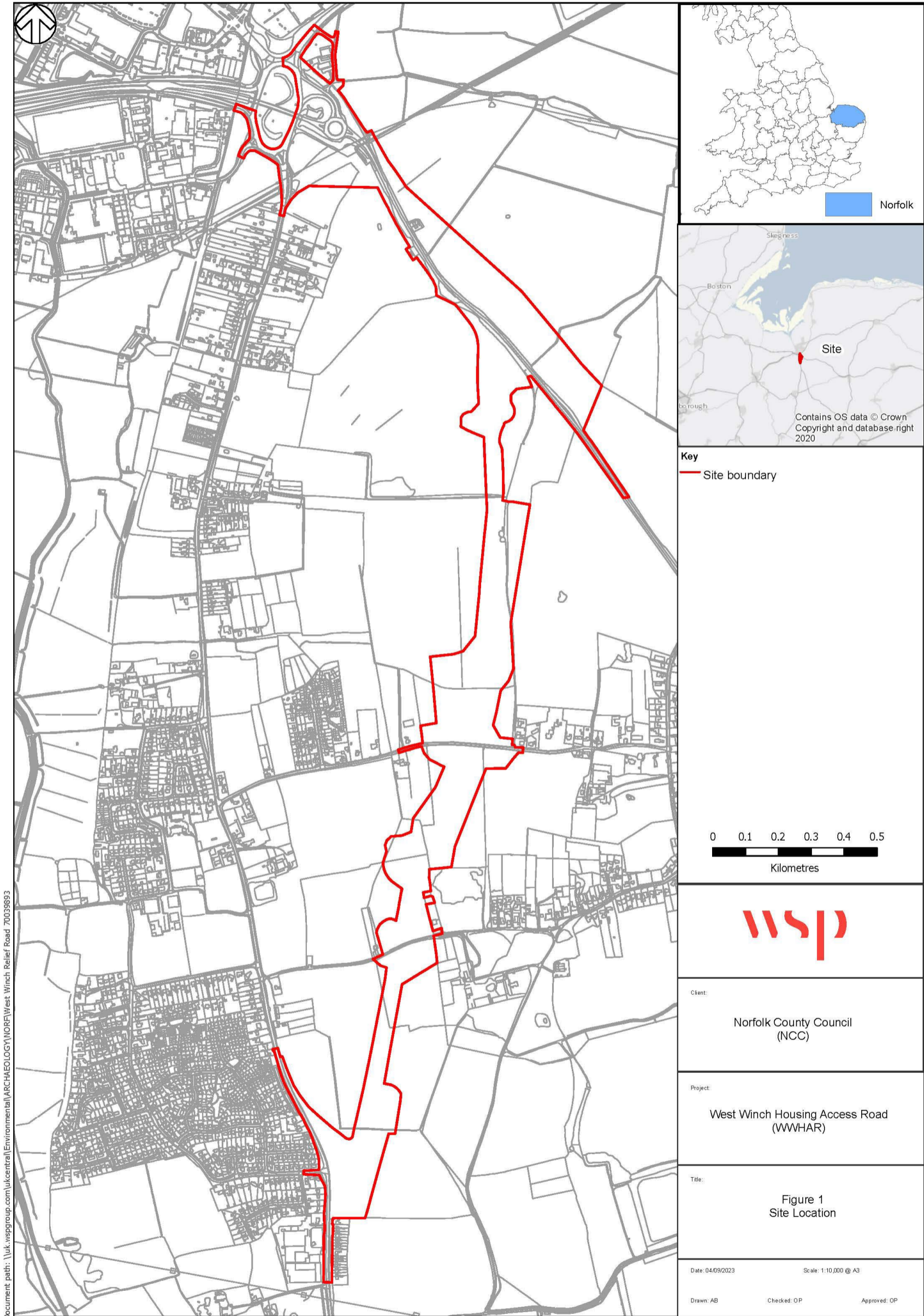
Figure 1.10 – Location of proposed trenches and location of know utilities ..... 13



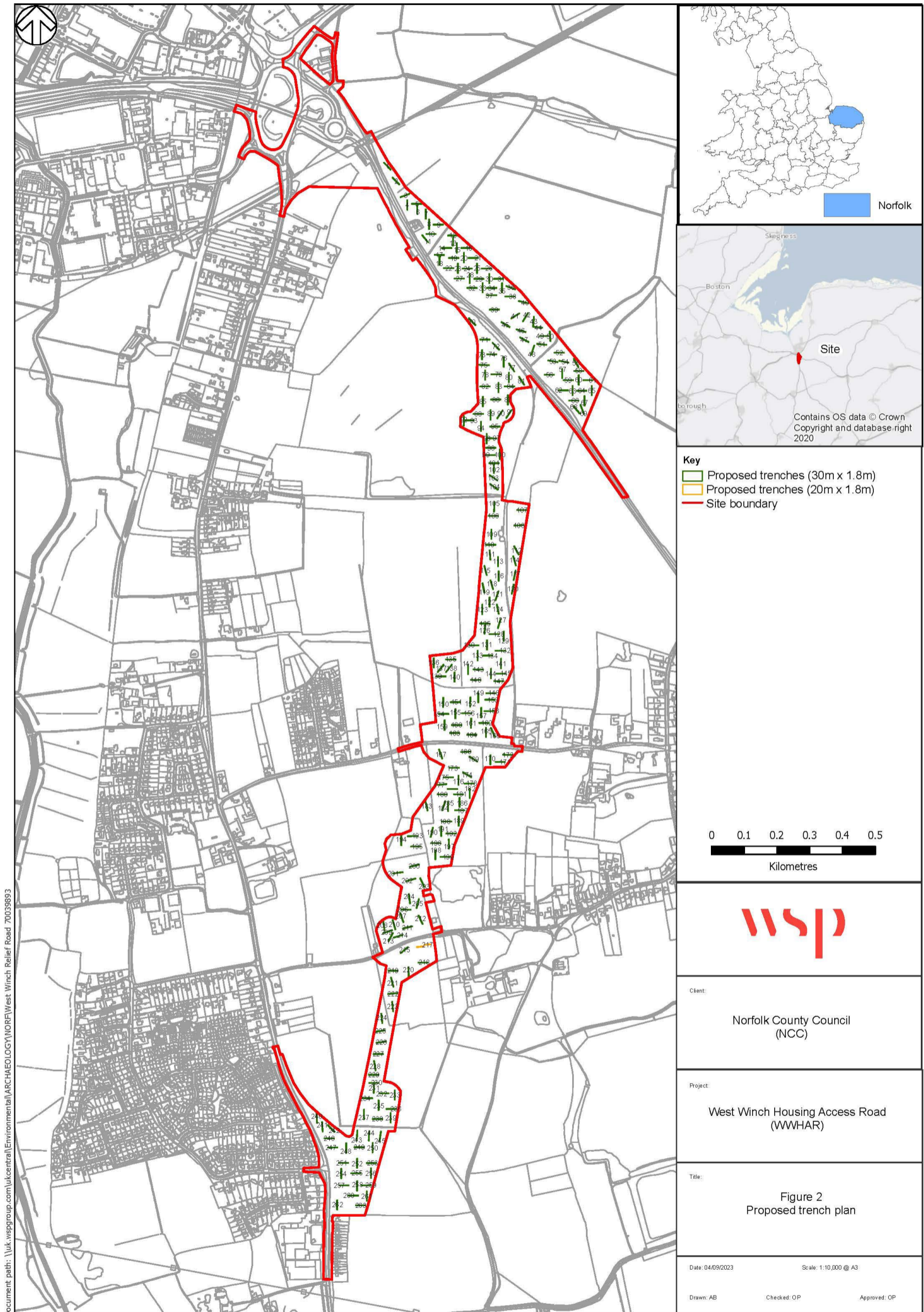
## **1 Figures**

- 1.1.1 This Written Scheme of Investigation (WSI) relates specifically to a programme of archaeological investigation (namely trial trenching), with figures illustrating site location, location of proposed trenches and location of known utilities.

**Figure 1.1 – Site location plan**



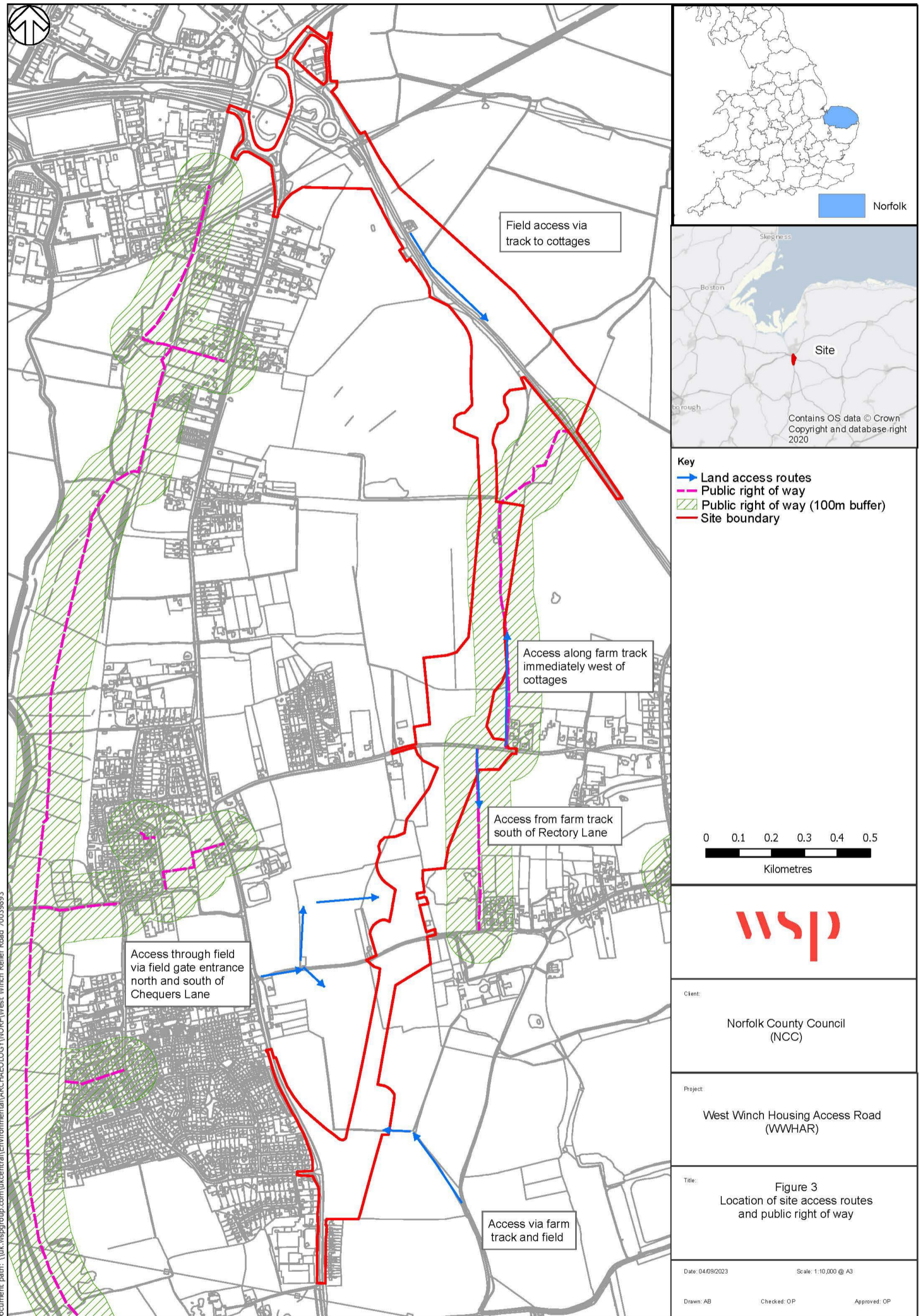
**Figure 1.2 – Proposed trench plan**



Document path: \\uk.wspgroup.com\ukcentral\Environmental\ARCHAEOLOGY\NORF\West Winch Relief Road 70039893

Contains Ordnance Survey data © Crown copyright and database right 2023.

Figure 1.3 – Location of site access routes and public rights of way



**Figure 1.4 – Location of proposed trenches and location of known utilities**

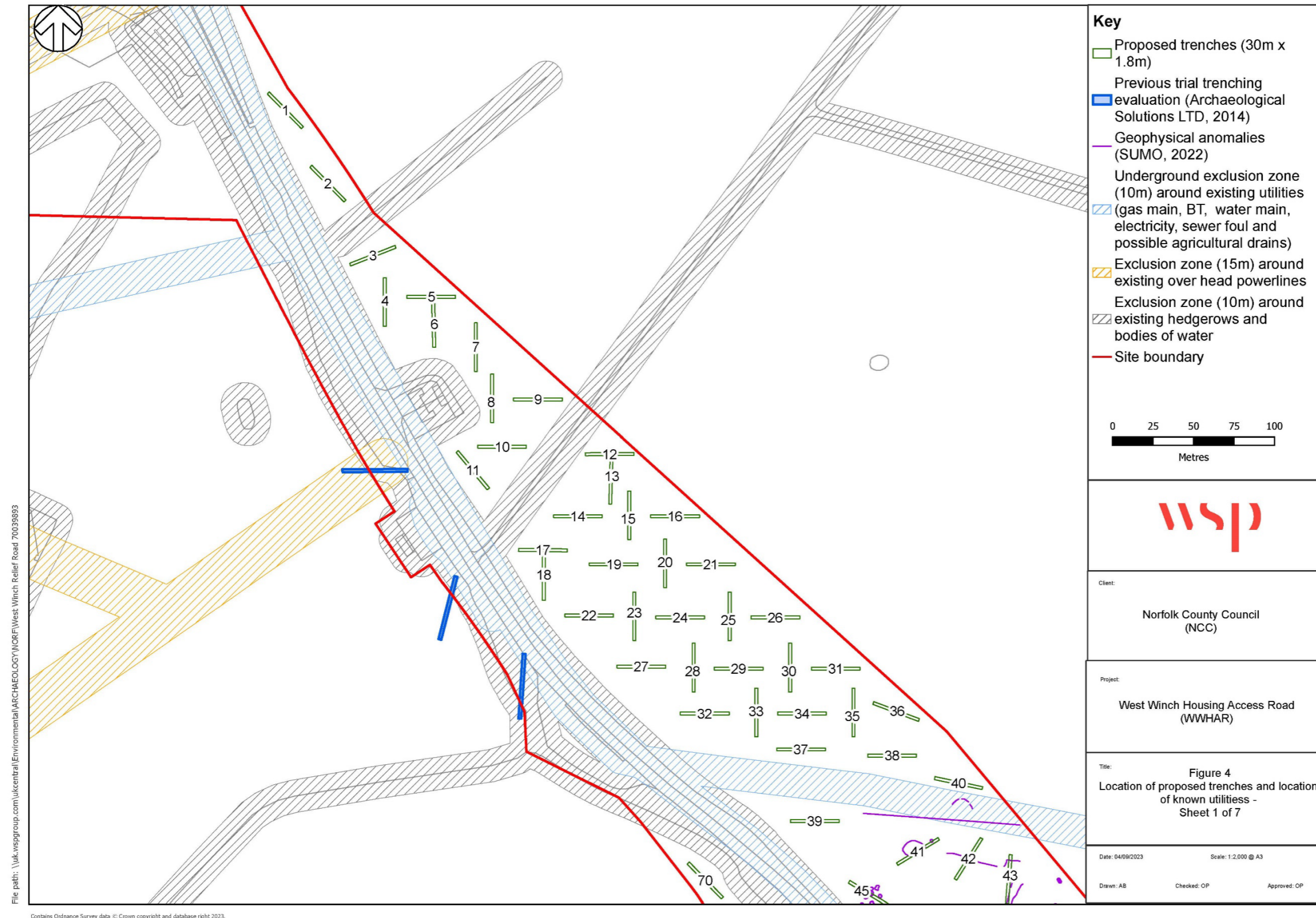
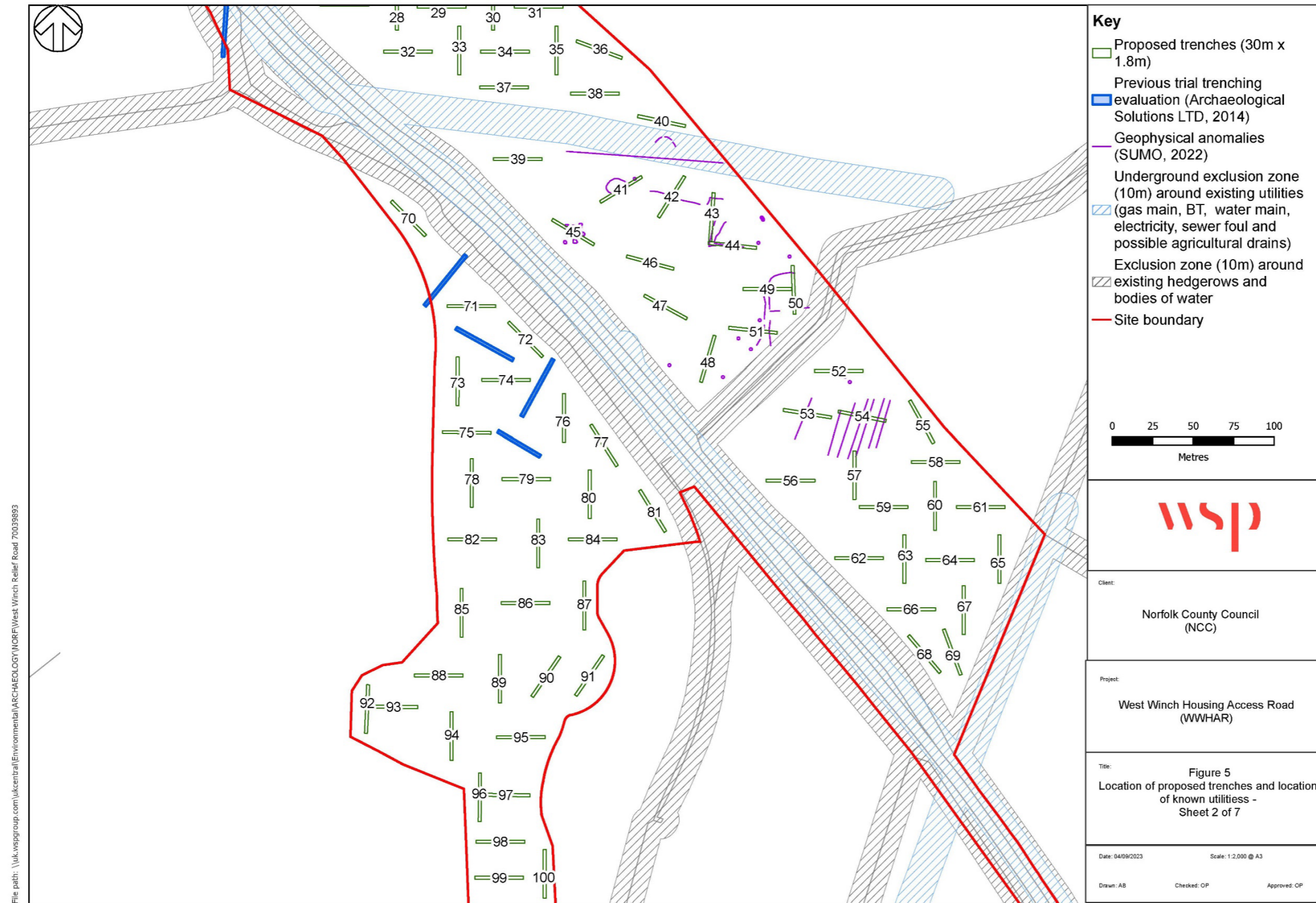


Figure 1.5 – Location of proposed trenches and location of known utilities

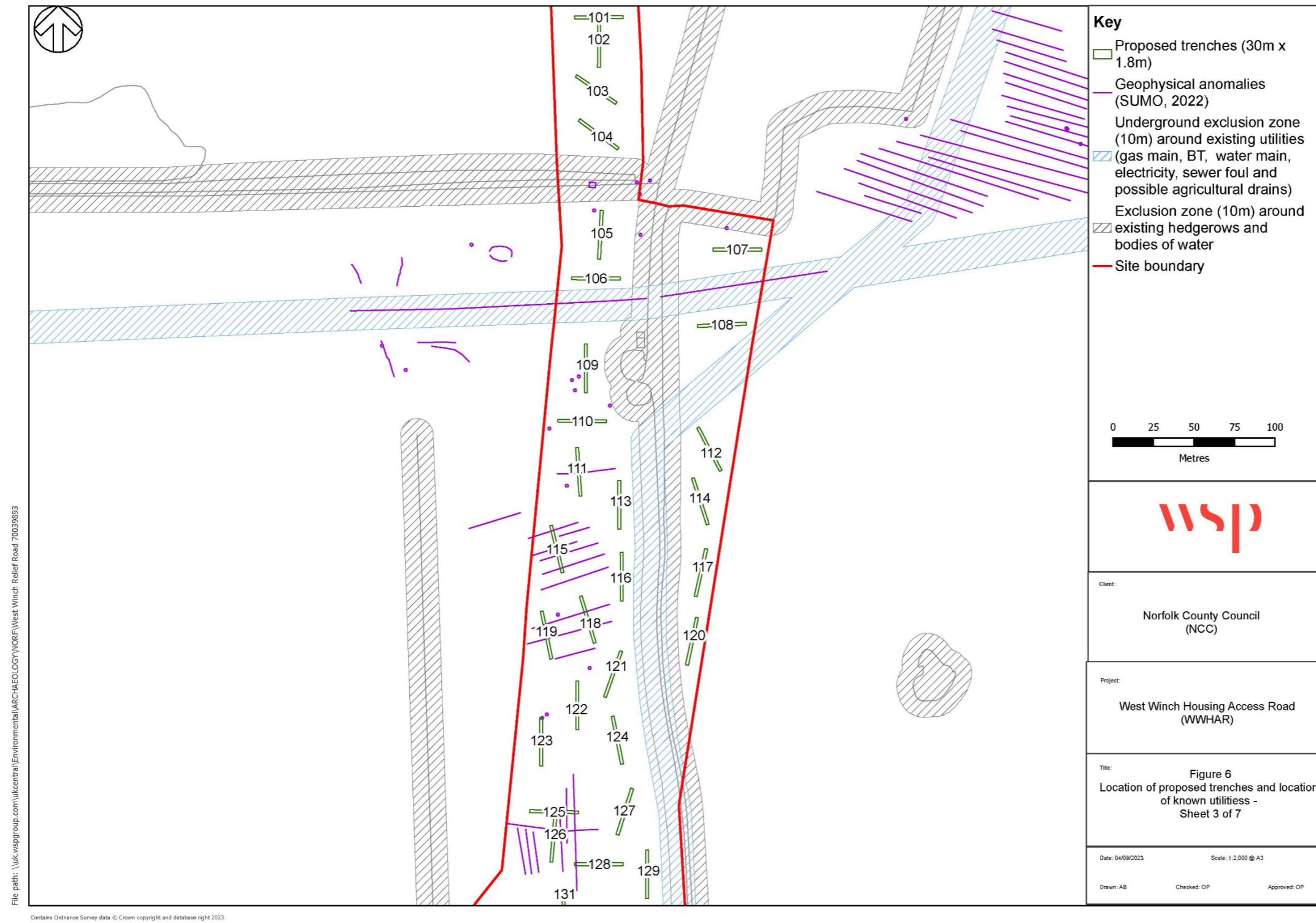


File path: \\uk.wspgroup.com\ukcentral\Environmental\ARCHAEOLOGY\MORF\West Winch Relief Road 70039893

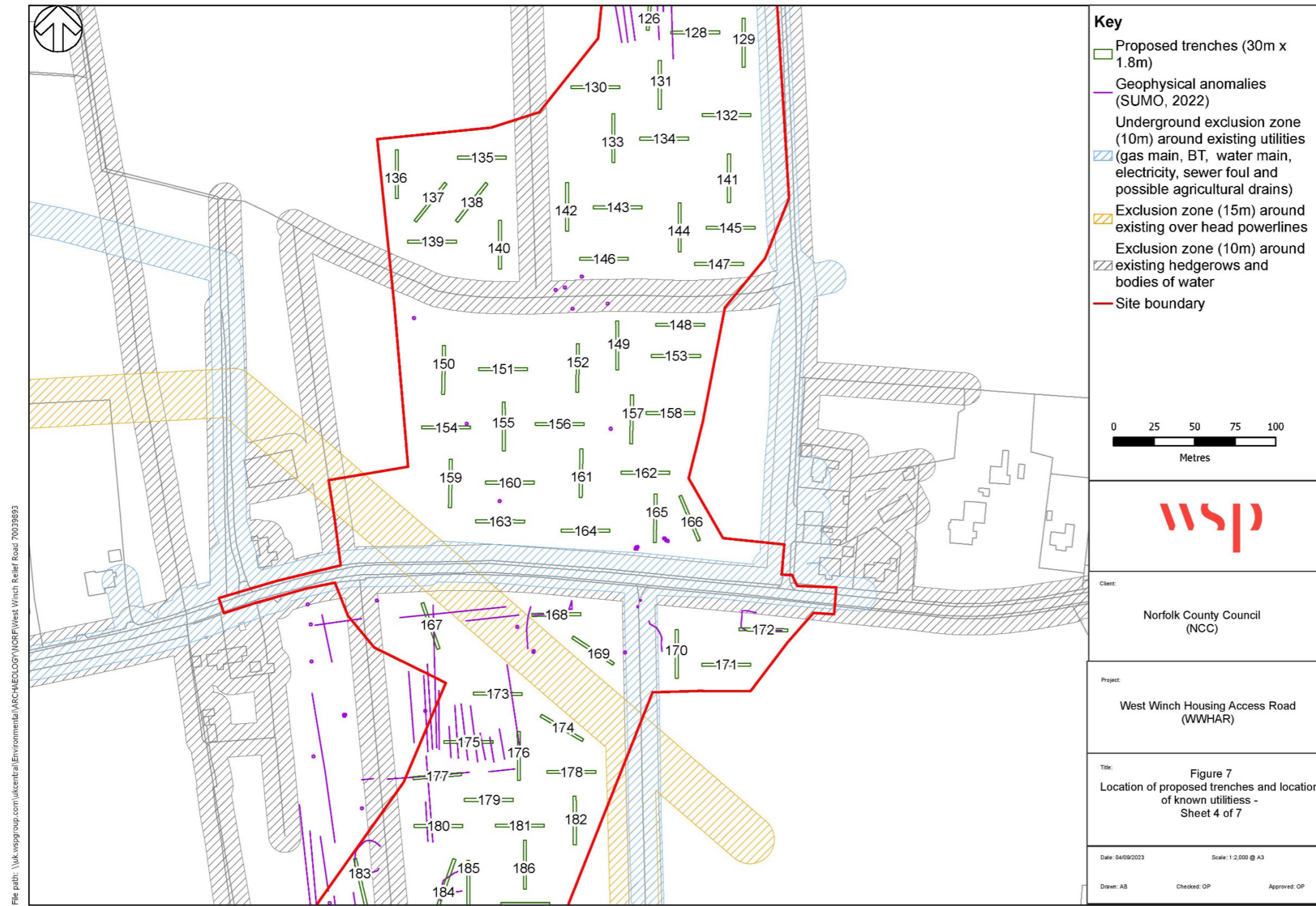
Contains Ordnance Survey data © Crown copyright and database right 2023.



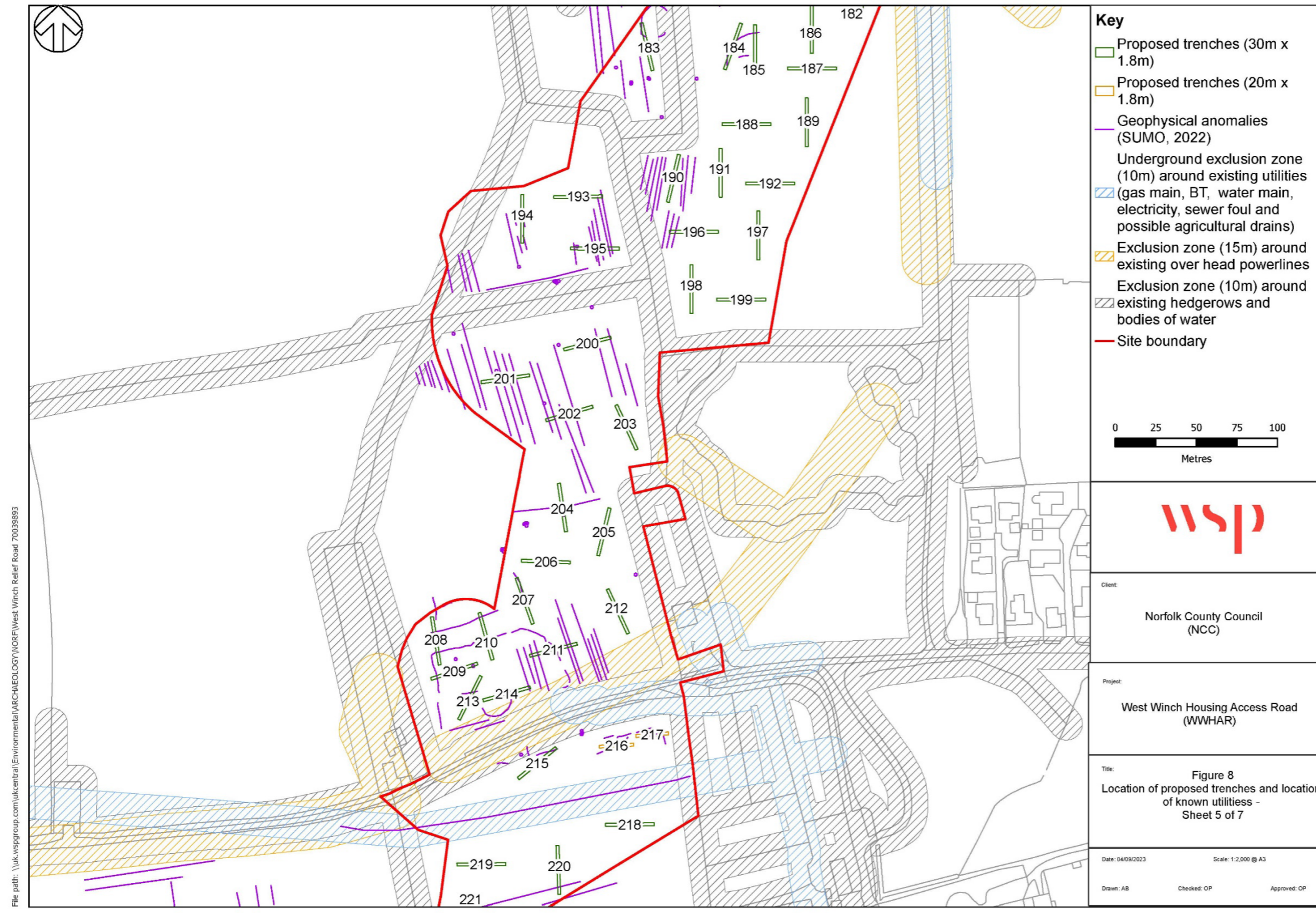
**Figure 1.6 – Location of proposed trenches and location of known utilities**



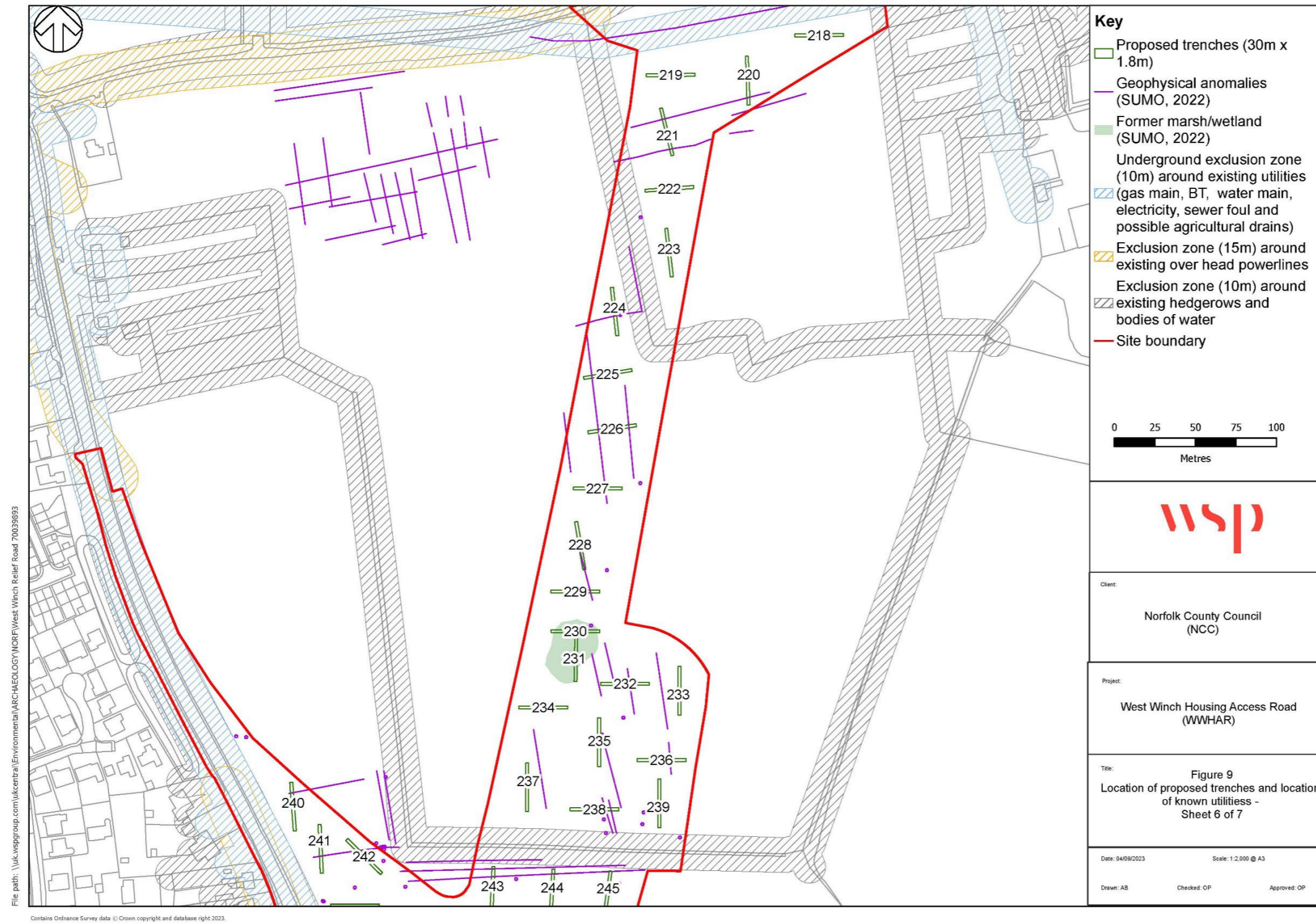
**Figure 1.7 – Location of proposed trenches and location of known utilities**



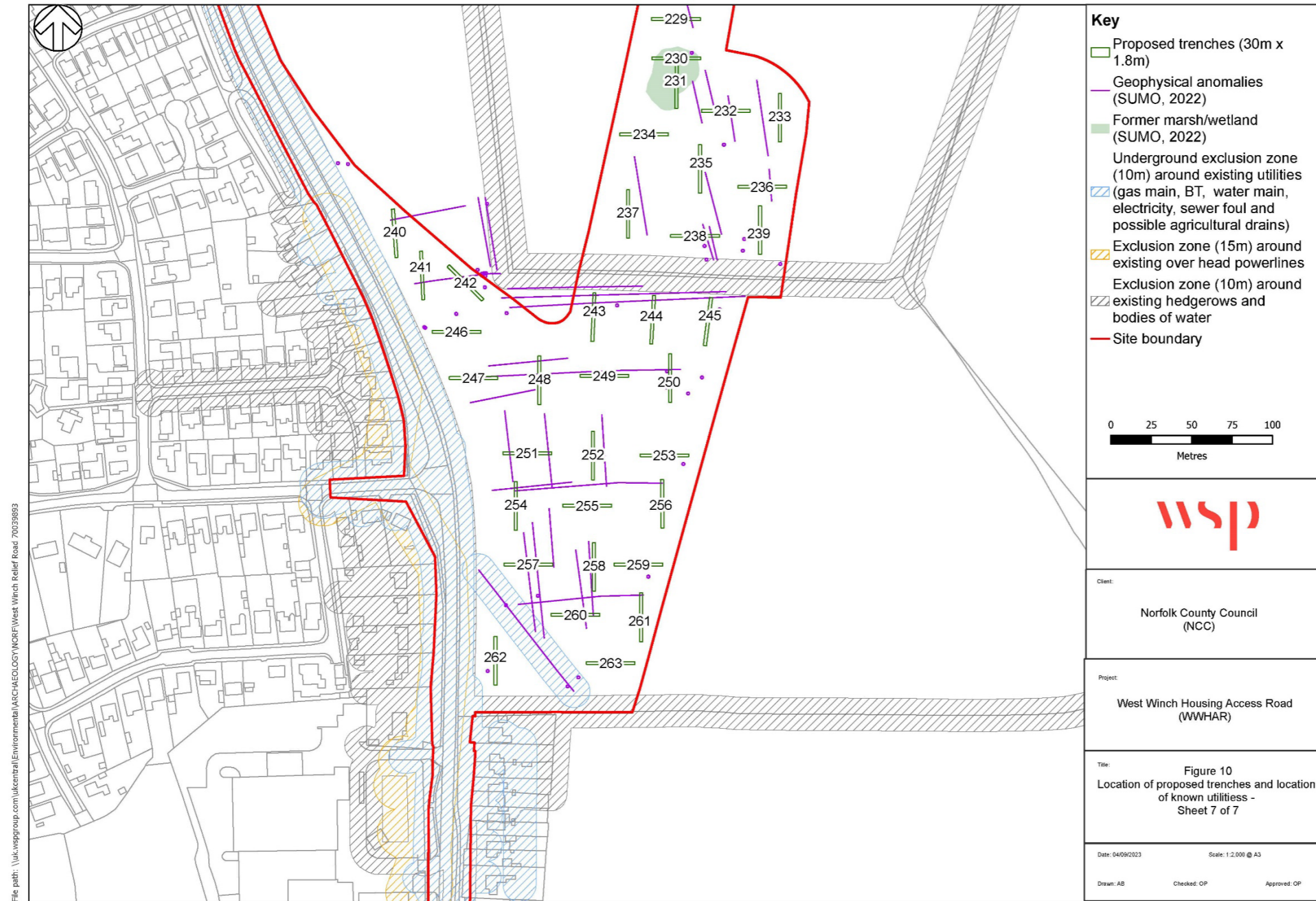
**Figure 1.8 – Location of proposed trenches and location of known utilities**



**Figure 1.9 – Location of proposed trenches and known location of utilities**



**Figure 1.10 – Location of proposed trenches and location of know utilities**



File path: \\uk.wspgroup.com\ukcentral\Environmental\ARCHAEOLOGY\MORE\West Winch Relief Road 70039893

Contains Ordnance Survey data © Crown copyright and database right 2023.