



West Winch Housing Access Road

Environmental Statement

Chapter 11

Appendix 11.1h: Drainage Strategy

Author: WSP

Document Reference: 3.11.01h

Version Number: 01

Date: December 2023



Contents

1	Introduction	3
---	--------------------	---

Figures

Figure 1-1 – Proposed drainage catchment plan	4
Figure 1-2 – Drainage strategy keyplan	5
Figure 1-3 – Drainage strategy sheet 1 of 4	6
Figure 1-4 – Drainage strategy sheet 2 of 4	7
Figure 1-5 – Drainage strategy sheet 3 of 4	8
Figure 1-6 – Drainage strategy sheet 4 of 4	9



1 Introduction

1.1.1 These plans show the proposed surface water drainage strategy for the West Winch Housing Access Road, including pipe runs, manholes, gulleys, attenuation basins and discharge locations. If you require this document in a more accessible format please contact westwinchhar@norfolk.gov.uk

Figure 1-1 – Proposed drainage catchment plan

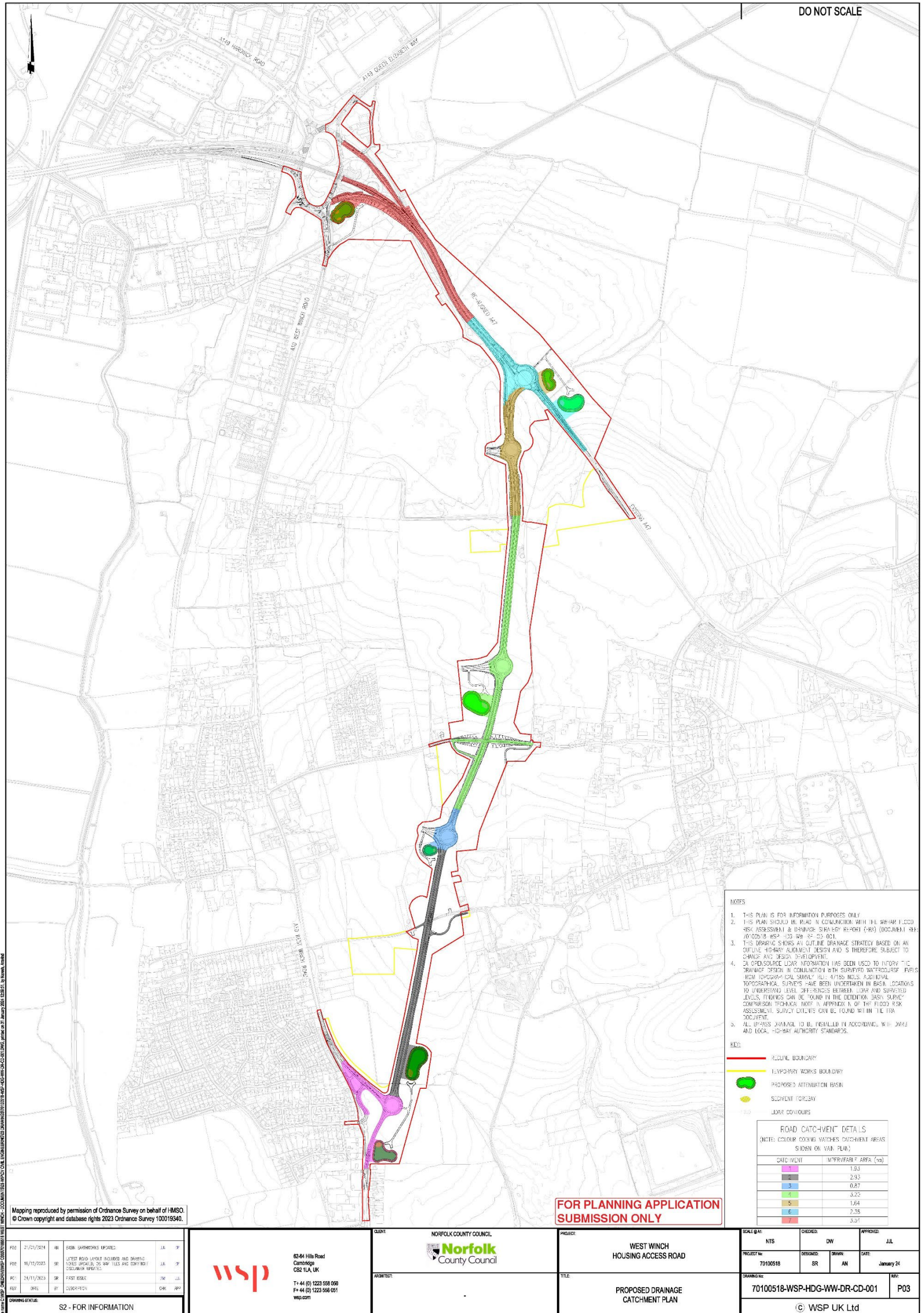


Figure 1-2 – Drainage strategy keyplan

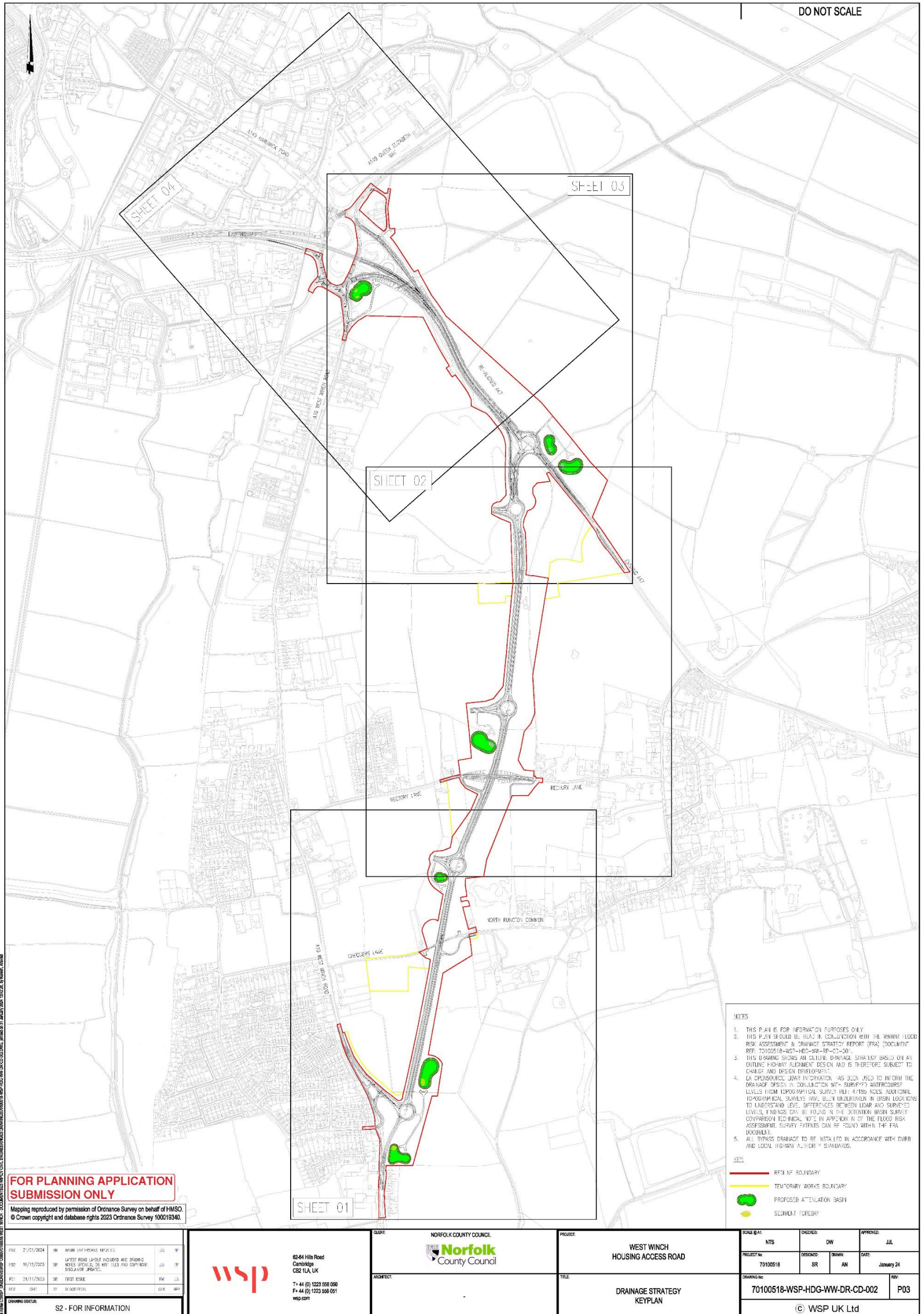


Figure 1-3 – Drainage strategy sheet 1 of 4

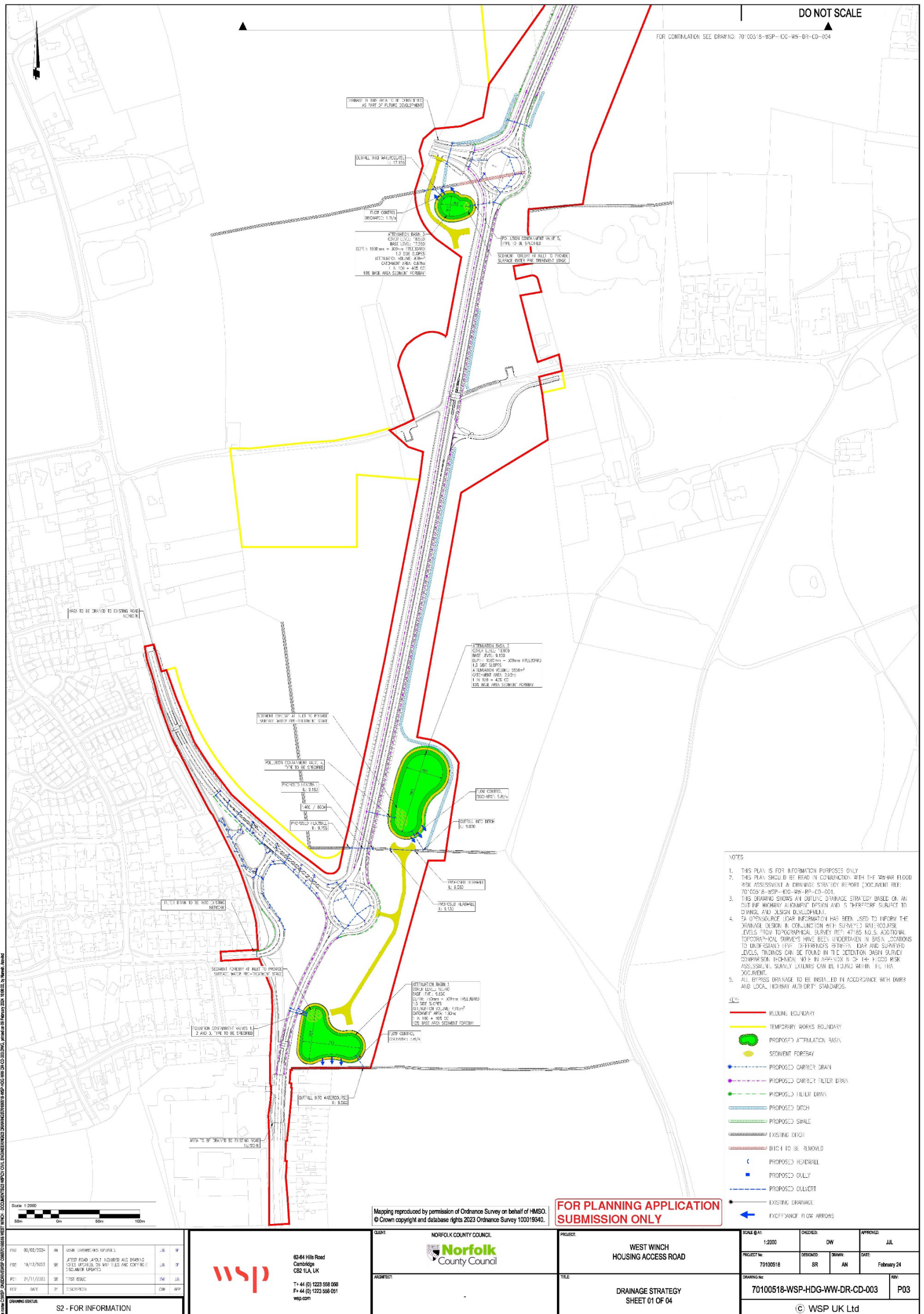


Figure 1-4 – Drainage strategy sheet 2 of 4

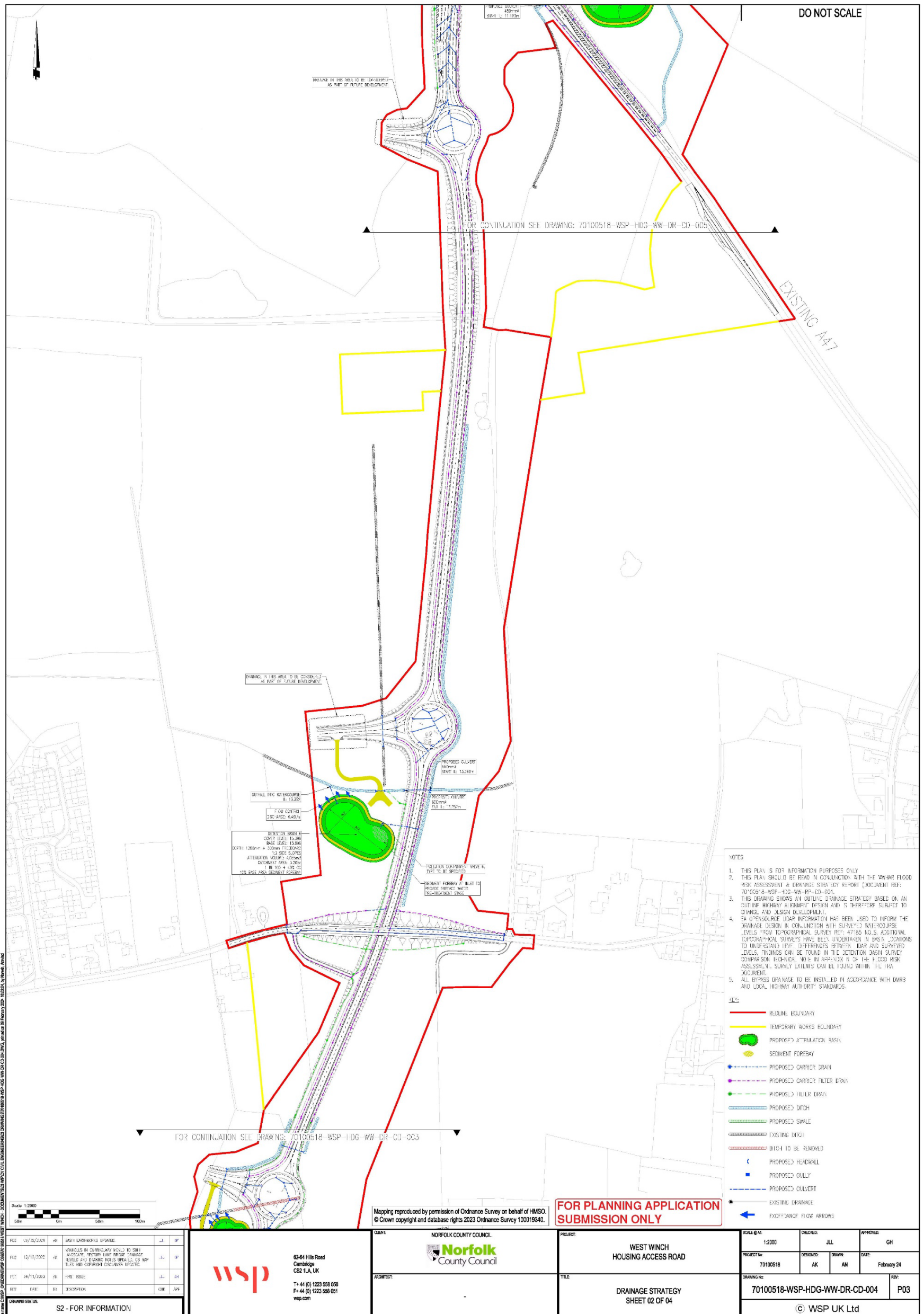


Figure 1-5 – Drainage strategy sheet 3 of 4

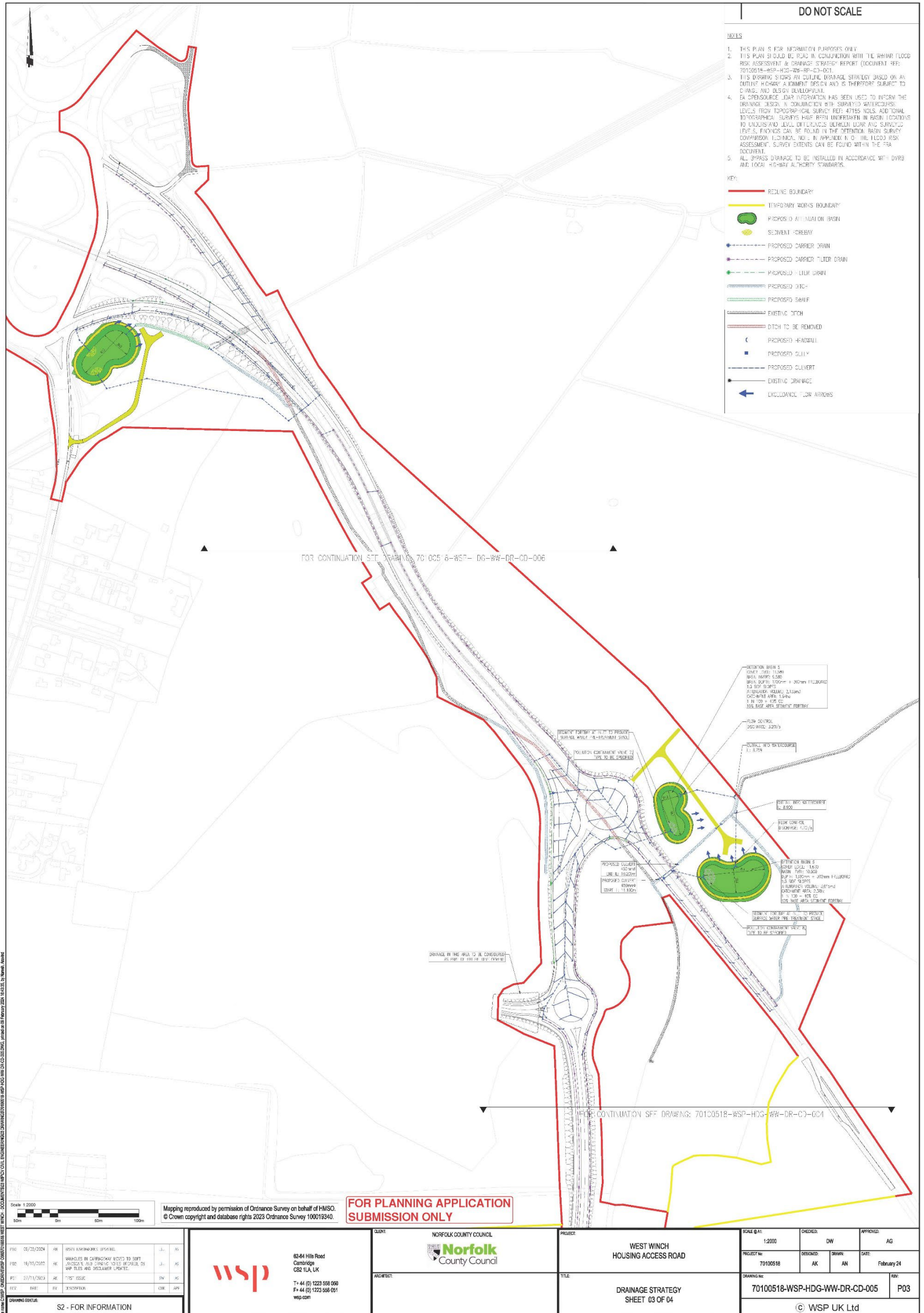


Figure 1-6 – Drainage strategy sheet 4 of 4

