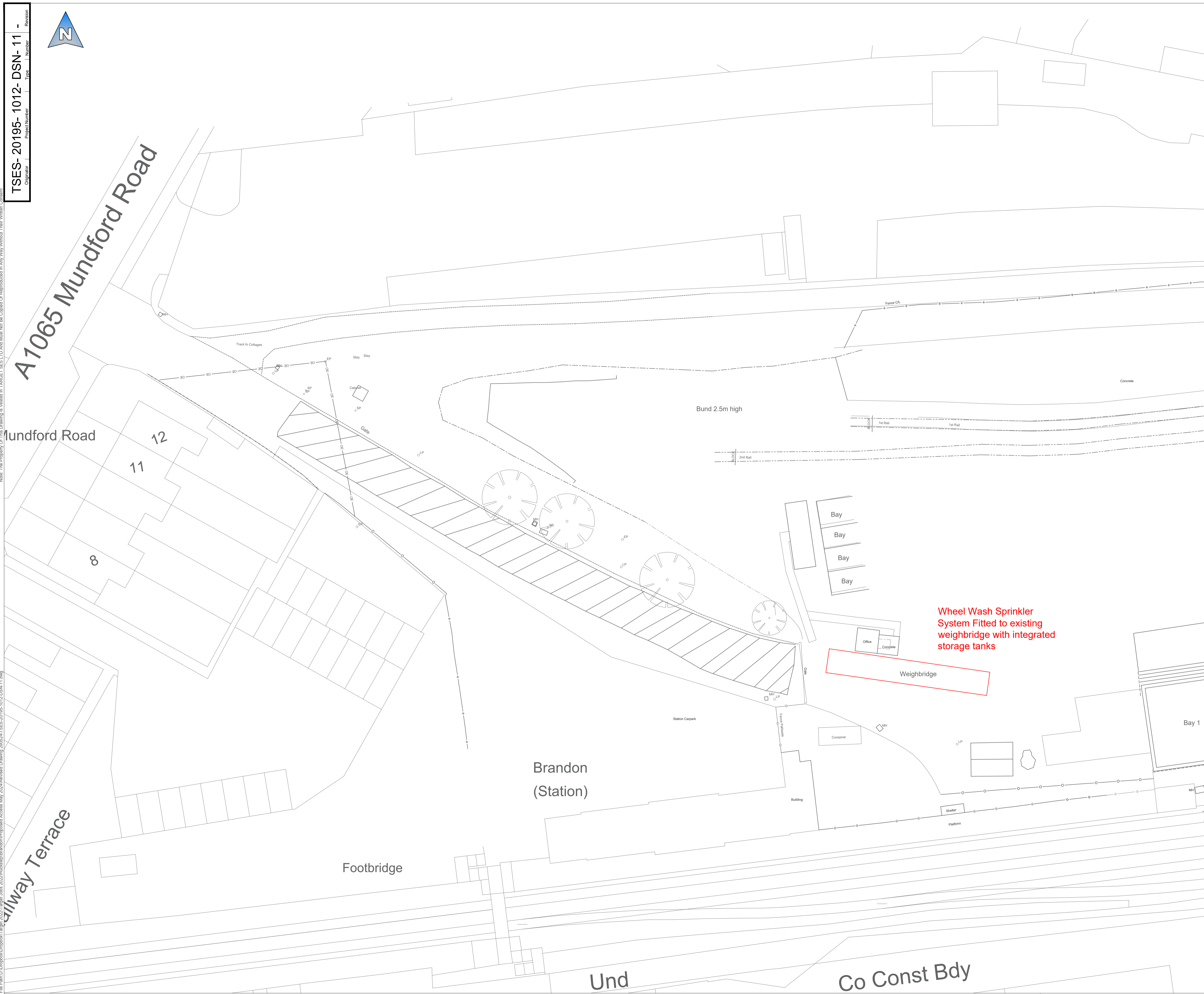
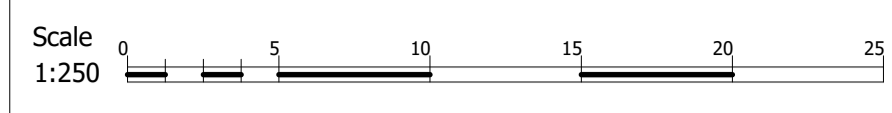
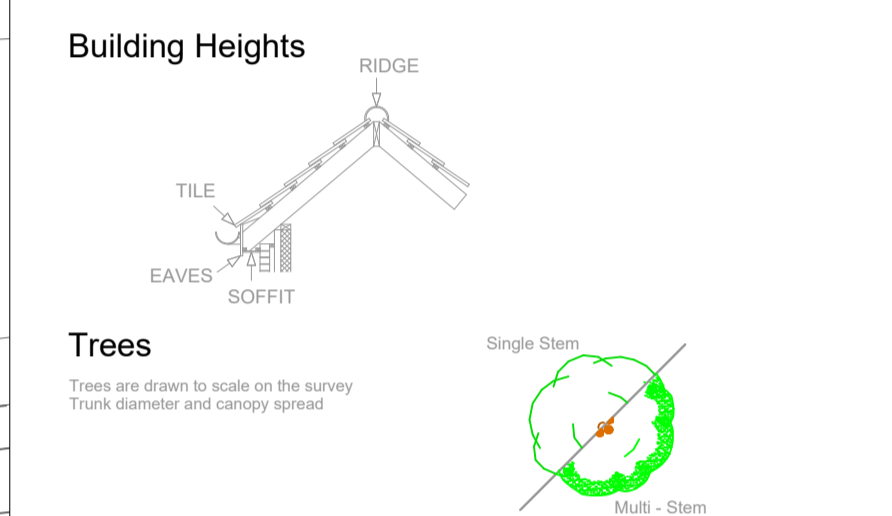
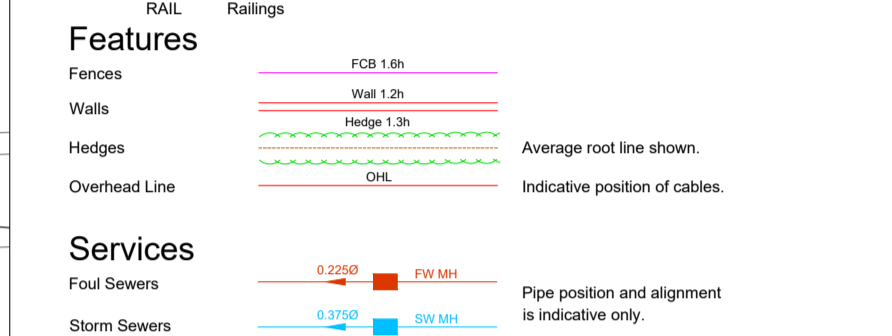


TSES-20195-1012-DSN-11 -  
 Originator Project Number Type Number Revision



EGL Notes:  
 Standard Abbreviations (where applicable)

AV	Air Valve	FH	Fire Hydrant	SP	Sign Post
BB	Bottom Bank	FP	Footpath	STAY	Stay
BH	Bore Hole	G	Gully Grate	SV	Sluice Valve
BL	Lt Ballard	GV	Gas Valve	TAC	Tactile Paving
BSL	Ballard	H	Hedge	TB	Top Bank
BN	Bin	IC	Inspection Cover	TBOX	Telephone Box
BS	Bus Stop	IL	Invert Level	TL	Traffic Light
Bushes	Bush	KO	Kerb Outlet	TOK	Top Of Kerb
BT	BT Box	LP	Lamp Post	TP	Telegraph Pole
CAB	Cabinet	MH	Manhole	TK	Track
CHNL	Channel	MP	Marker Post	TS	Traffic Sign MH
CL	Centreline	NB	Name Board	VENT	Vent
CONC	Concrete	PW	Partition Wall	W	Water Cover
COL	Column	PB	Post Box	WL	White Line
DB	Ditch Bottom	PM	Parking Meter	WD	Wash Out
DCHNL	Drainage Channel	PO	Post	YL	Yellow Line
Door	Door	RE	Rodding Eye		
EEB	Electric MH Cover	R	Ridge		
EP	Electric Pole	RP	Reflector Post		
ER	Earth Road	RS	Road Sign		
ET	EP+Transformer	SETTS	Granite Setts		
Feeder	Feeder Pillar	SF	Safety Fence		
FCB	Close Boarded				
FCL	Chain Link				
FHD	Harding				
FHR	Hedge Fence				
FPL	Palisade				
FPR	Post & Rail				
FPW	Post & Wire				
RAIL	Railings				



SURVEY CARRIED OUT USING TRIMBLE 59 TOTAL STATION & TRIMBLE R10 GPS.  
 THE SURVEY HAS BEEN ACCURATELY POSITIONED ON THE ORDNANCE SURVEY NATIONAL GRID SYSTEM USING GPS OBSERVATIONS TO THE GB ACTIVE NETWORK AND THE LATEST ORDNANCE SURVEY TRANSFORMATION (OSTN15/OSGB18).  
 LOCAL SCALE FACTOR HAS BEEN REMOVED TO TRANSFORM THE SURVEY TO A FLAT (EARTH GRID) SCALE FACTOR 1.00000.  
 ALL LEVELS RELATE TO ORDNANCE SURVEY DATUM (NAD 49). VERTICAL CONTROL HAS BEEN ESTABLISHED USING GPS OBSERVATIONS TO THE GB ACTIVE NETWORK AND THE LATEST ORDNANCE SURVEY TRANSFORMATION (OSTN15/OSGB18).  
 ALL DIMENSIONS ARE IN METRES UNLESS OTHERWISE STATED.  
 ANY CRITICAL DIMENSIONS AND MEASUREMENTS SHOULD BE BASED ON THE ORIGINAL DIGITAL DATA AND CONFIRMED WITH TARGET BES 15.  
 NO ATTEMPT HAS BEEN MADE TO ENTER ANY CONFINED SPACES ON THIS SITE. WE HAVE MEASURED INVERT DEPTHS, ESTIMATED PIPE SIZES AND DRAWN THE DIRECTION OF FLOW ONLY WHERE DOWN RUNS ARE ACTIVE AT THE TIME OF SURVEY. INSPECTION COVERS WHICH WE WERE UNABLE TO GET TO BY MANUAL METHODS ARE DENOTED AS MH (U/L). WE DO NOT QUOTE FOR THE USE OF HYDRAULIC LIFT EQUIPMENT.  
 DRAINAGE RUNS BETWEEN INSPECTION COVERS HAVE NOT BEEN INVESTIGATED. ANY SHOWN ARE ESTIMATED AND NOT CONFIRMED. ALL DRAINAGE RUNS SHOULD BE PROVED BY DYE TRACKING AND IF NECESSARY BY FLOOD DETECTION METHODS PRIOR TO ANY DESIGN WORK. ALL PIPE SIZES AND CONNECTIONS SHOULD ALSO BE CONFIRMED WITH YOUR LOCAL DRAINAGE AUTHORITY PRIOR TO ANY DESIGN WORK.  
 THERE MAY BE INSPECTION COVERS ON SITE WHICH WERE NOT VISIBLE AT THE TIME OF SURVEY. THEY MAY HAVE BEEN BURIED OR COVERED BY VEGETATION. YOU SHOULD CONSULT YOUR LOCAL DRAINAGE AUTHORITY OR COMMISSION A CCTV DRAINAGE SURVEY TO ENSURE THAT YOU LOCATE ANY MISSING COVERS OR DRAINAGE RUNS.

REV	Date	Created By	Comments
-	29.05.24	TH	First Issue
Scale at A1		Project Number	20195-1012
1:250			
Drawing Status			
<input checked="" type="checkbox"/>	Existing Topographic Survey		
<input type="checkbox"/>	As Built Survey		
<input type="checkbox"/>	For Information		

**2 Flint Cottages, Lackford,  
 Bury St Edmunds, Suffolk, IP28 6HW**  
 t: 01284 711476  
 m: 07557 734388  
 e: info@targetltd.co.uk

Client	Network Rail
Project	Brandon Rail Head
Title	Wheel Wash