



STANDARD NOTES

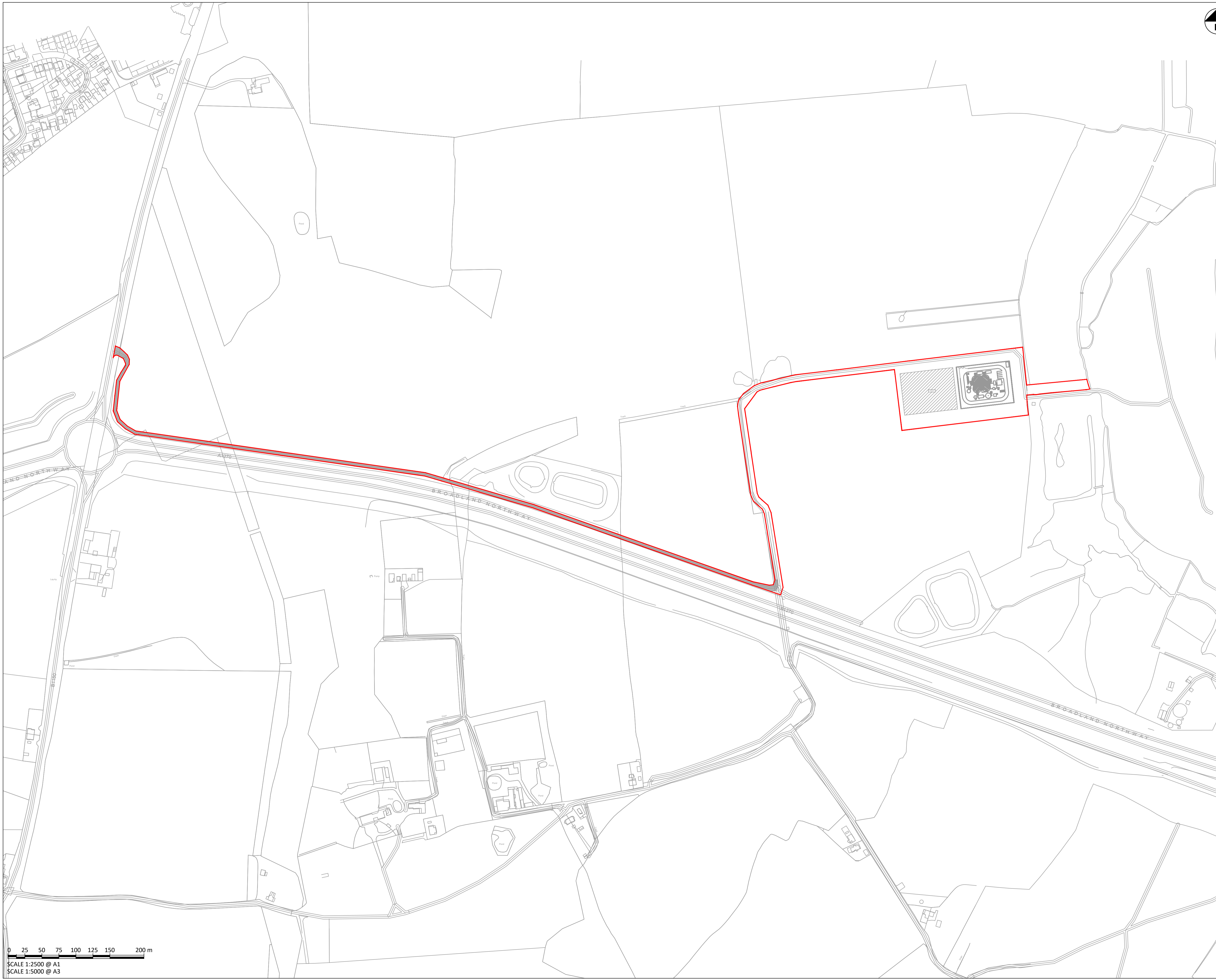
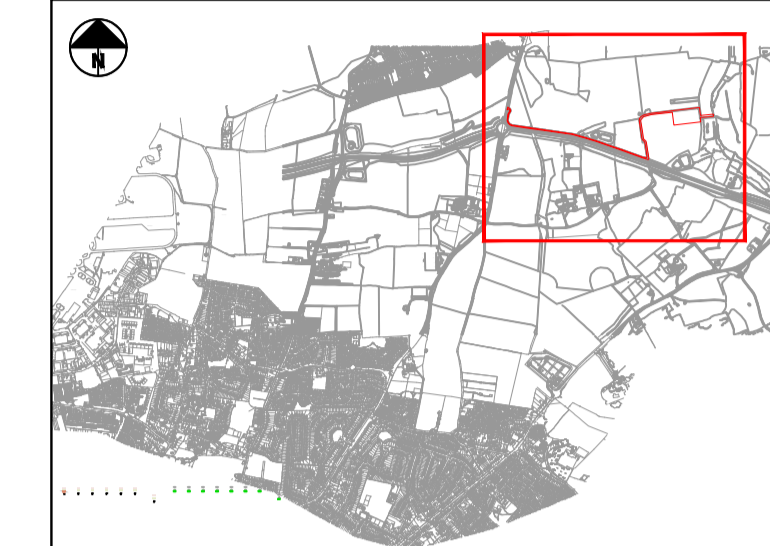
1. THIS DRAWING IS TO BE READ IN CONJUNCTION WITH ALL RELEVANT ARCHITECT'S AND ENGINEER'S DRAWINGS AND THE SPECIFICATIONS.
2. THIS DRAWING SHOULD NOT BE SCALED.
3. ALL DIMENSIONS ARE TO BE VERIFIED BY THE CONTRACTOR ON SITE.
4. ALL DISCREPANCIES SHOULD BE REPORTED TO C.A./E.A. PRIOR TO THE COMMENCEMENT OF WORKS.

© CIVIC ENGINEERS LIMITED

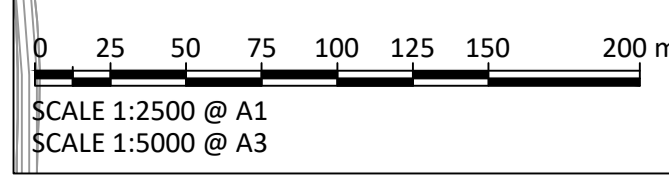
KEY:

- RED LINE BOUNDARY FOR PLANNING - 3.14ha
- EXISTING TRACK

KEY PLAN:



FILE LOCATION PATH: P:\PROJECTS HOT\955-07 BEESTON PARK- QUINN ESTATES\04 BIM\CIVILS\DRAWINGS\955-07-CIV-XX-D-H-40004_WWTW PLANNING SHEET 1.DWG



DATE	REV	DESCRIPTION	DRAWN	CHKD
31.05.24	P05	UPDATED FOR PLANNING REISSUE	AB	RWI
15.02.24	P04	ISSUED FOR INFORMATION	AS	BM
12.02.24	P03	REDLINE BOUNDARY UPDATED	BM	RWI
08.02.24	P02	REDLINE BOUNDARY UPDATED	BM	RWI
12.12.23	P01	ISSUED FOR INFORMATION	RS	RWI



MANCHESTER Carver's Warehouse, 77 Dale Street, Manchester, M1 2HG. Tel: 0161 228 6757
 LONDON Reeds Wharf, 33 Mill Street, London SE1 2AX. Tel: 020 7253 2977
 LEEDS 1 Saw Mill Street, Water Lane, Leeds, LS11 5WE. Tel: 0113 2025 130
 GLASGOW 33 Virginia Street, Glasgow, G1 1TH. Tel: 0141 370 8829

www.civicengineers.com

PROJECT
**BEESTON PARK
 NORWICH**

TITLE
**WASTE WATER TREATMENT WORKS
 PLANNING
 SHEET 1**

DRAWING STATUS		STATUS CODE	
PRELIMINARY		S3	
CE PROJECT No.	SCALE @ A1	DATE CREATED	DRAWN
955-07	1:2500	DEC 23	RS
DRAWING No.			REV
955-07-CIV-XX-XX-D-H-40004			P05