



West Winch Housing Access Road

Environmental Statement Chapter 9: Landscape and Visual

Appendix 5: Soft Landscape Design Proposals

Author: WSP

Document Reference: NCC/3.09.05

Version Number: 001

Date: November 2023



Contents

1	Introduction	3
1.1	Overview	3
1.2	Soft Landscape Design Proposals Sheet Plan	3
1.3	Soft Landscape Design Proposals	3
1.4	Soft Landscape Design Proposals – Planting Schedule.....	3
1.5	Typical Soft Landscape Design Details	3
2	Drawings	3

Figures

Figure 1	– Soft Landscape Design Proposals Sheet Plan.....	4
Figure 2	- Soft Landscape Design Proposals Sheet 1 of 9.....	5
Figure 3	- Soft Landscape Design Proposals Sheet 2 of 9.....	6
Figure 4	- Soft Landscape Design Proposals Sheet 3 of 9.....	7
Figure 5	– Soft Landscape Design Proposals Sheet 4 of 9	8
Figure 6	– Soft Landscape Design Proposals Sheet 5 of 9	9
Figure 7	– Soft Landscape Design Proposals Sheet 6 of 9	10
Figure 8	– Soft Landscape Design Proposals Sheet 7 of 9	11
Figure 9	– Soft Landscape Design Proposals Sheet 8 of 9	12
Figure 10	- Soft Landscape Design Proposals Sheet 9 of 9.....	13
Figure 11	– Soft Landscape Design Proposals – Planting Schedule	14
Figure 12	– Typical Soft Landscape Design Details.....	15



1 Introduction

1.1 Overview

- 1.1.1 This set of drawings present the Landscape Design Proposals for the proposed West Winch Housing Access Road (WWHAR) scheme.
- 1.1.2 Each of these drawings show the proposals on a single sheet over Ordnance Survey mapping which shows the proposals in relation to the villages of West Winch and North Runcton, as well as the existing road network.
- 1.1.3 These drawings are intended to show the Landscape Design Proposals only and do not show the proposed housing development.
- 1.1.4 The drawings included in this pack are as follows;

1.2 Soft Landscape Design Proposals Sheet Plan

- 1.2.1 Figure 1 shows the overall WWHAR scheme and sets out the extents of each of the sheets that follow.

1.3 Soft Landscape Design Proposals

- 1.3.1 Figures 2 - 10 show Sheets 1-9 of the Soft Landscape Design Proposals annotated with landscape typologies and quantities.

1.4 Soft Landscape Design Proposals – Planting Schedule

- 1.4.1 Figure 11 contains a summary table setting out the overall quantities required to implement the Soft Landscape Design Proposals.

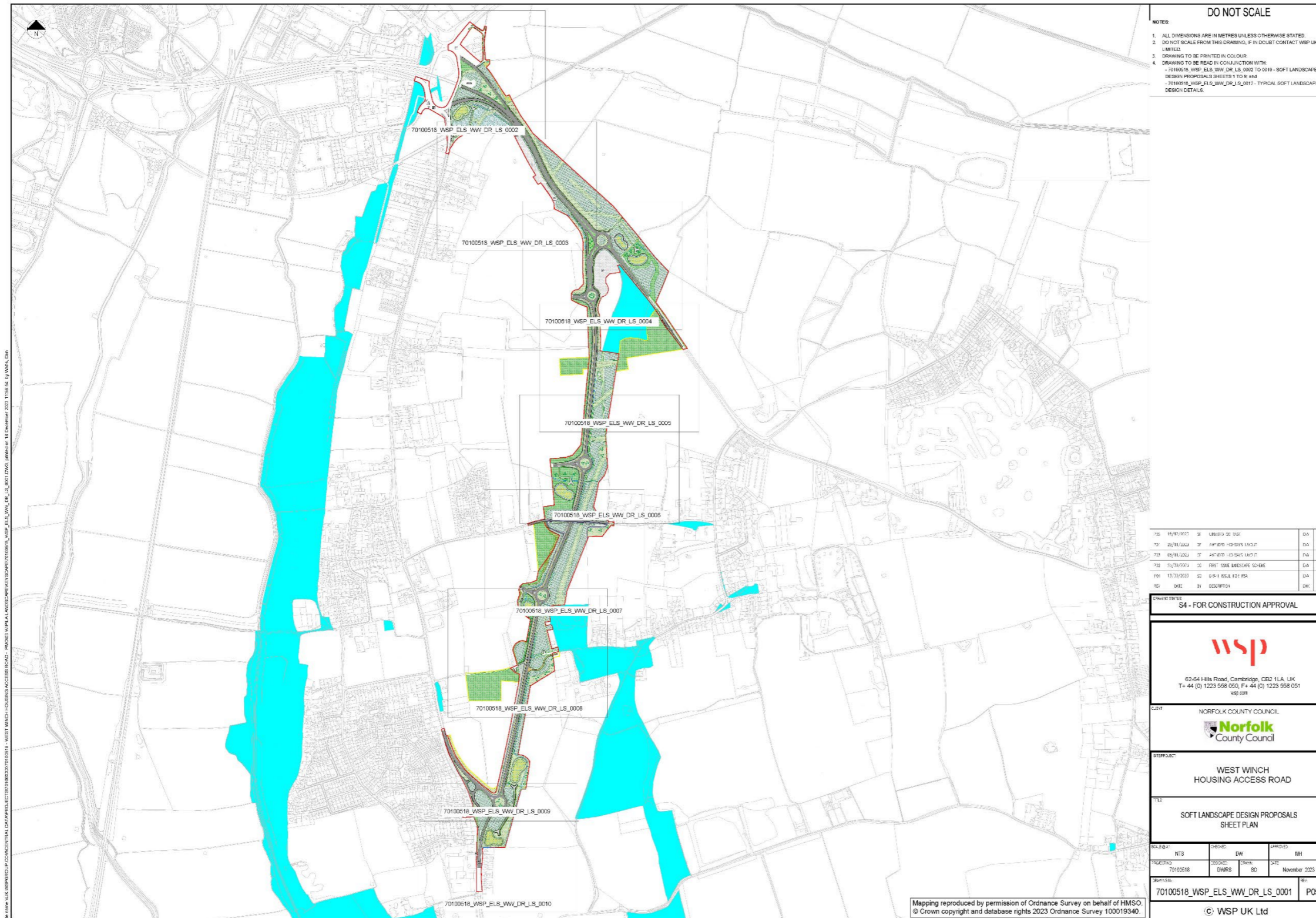
1.5 Typical Soft Landscape Design Details

- 1.5.1 Figure 12 illustrates typical soft landscape design details to be used during construction.

2 Drawings

- 2.1.1 The drawings described above are provided on the following pages.

Figure 1 – Soft Landscape Design Proposals Sheet Plan



DO NOT SCALE

NOTES:

1. ALL DIMENSIONS ARE IN METRES UNLESS OTHERWISE STATED.
2. DO NOT SCALE FROM THIS DRAWING. IF IN DOUBT CONTACT WSP UK LIMITED.
3. DRAWING TO BE PRINTED IN COLOUR.
4. DRAWING TO BE READ IN CONJUNCTION WITH:
 - 70100518_WSP_ELS_WW_DR_LS_0002 TO 0010 - SOFT LANDSCAPE DESIGN PROPOSALS SHEETS 1 TO 8 A3
 - 70100518_WSP_ELS_WW_DR_LS_0012 - TYPICAL SOFT LANDSCAPE DESIGN DETAILS.

NO	16/11/2023	BY	LEWIS DE SOU	CHK	YH
NO	20/11/2023	BY	ANNEKE - OLSON LINDO	CHK	YH
NO	05/12/2023	BY	ANNEKE - OLSON LINDO	CHK	YH
NO	19/03/2024	BY	FRANK - SORELL SCHEDE	CHK	YH
REV	13/03/2023	BY	DAVID HILL	CHK	YH
REV	0001	BY	DESCRIPTION	CHK	YH

CONTRACT NO: **S4 - FOR CONSTRUCTION APPROVAL**



62-64 Hills Road, Cambridge, CB2 1LA, UK
 T +44 (0) 1223 558 050, F +44 (0) 1223 558 051
 wsp.com

CLIENT: **NORFOLK COUNTY COUNCIL**



PROJECT: **WEST WINCH HOUSING ACCESS ROAD**

FILE: **SOFT LANDSCAPE DESIGN PROPOSALS SHEET PLAN**

SCALE: A	NTS	DRAWN: DF	APPROVED: MH
PROJECT NO:	70100518	ISSUED: SO	DATE: November 2023

FORM NO: **70100518_WSP_ELS_WW_DR_LS_0001** | REV: **P05**

© WSP UK Ltd

Mapping reproduced by permission of Ordnance Survey on behalf of HMSO.
 © Crown copyright and database rights 2023 Ordnance Survey 100019340.

File name: U:\WSP\0518\CONCEPTUAL DATA\PROJECTS\70100518\CONCEPTUAL\70100518_WSP_ELS_WW_DR_LS_0001.dwg, printed on: 18 December 2023 11:58:52, by: WSP, Dwg

Figure 2 - Soft Landscape Design Proposals Sheet 1 of 9

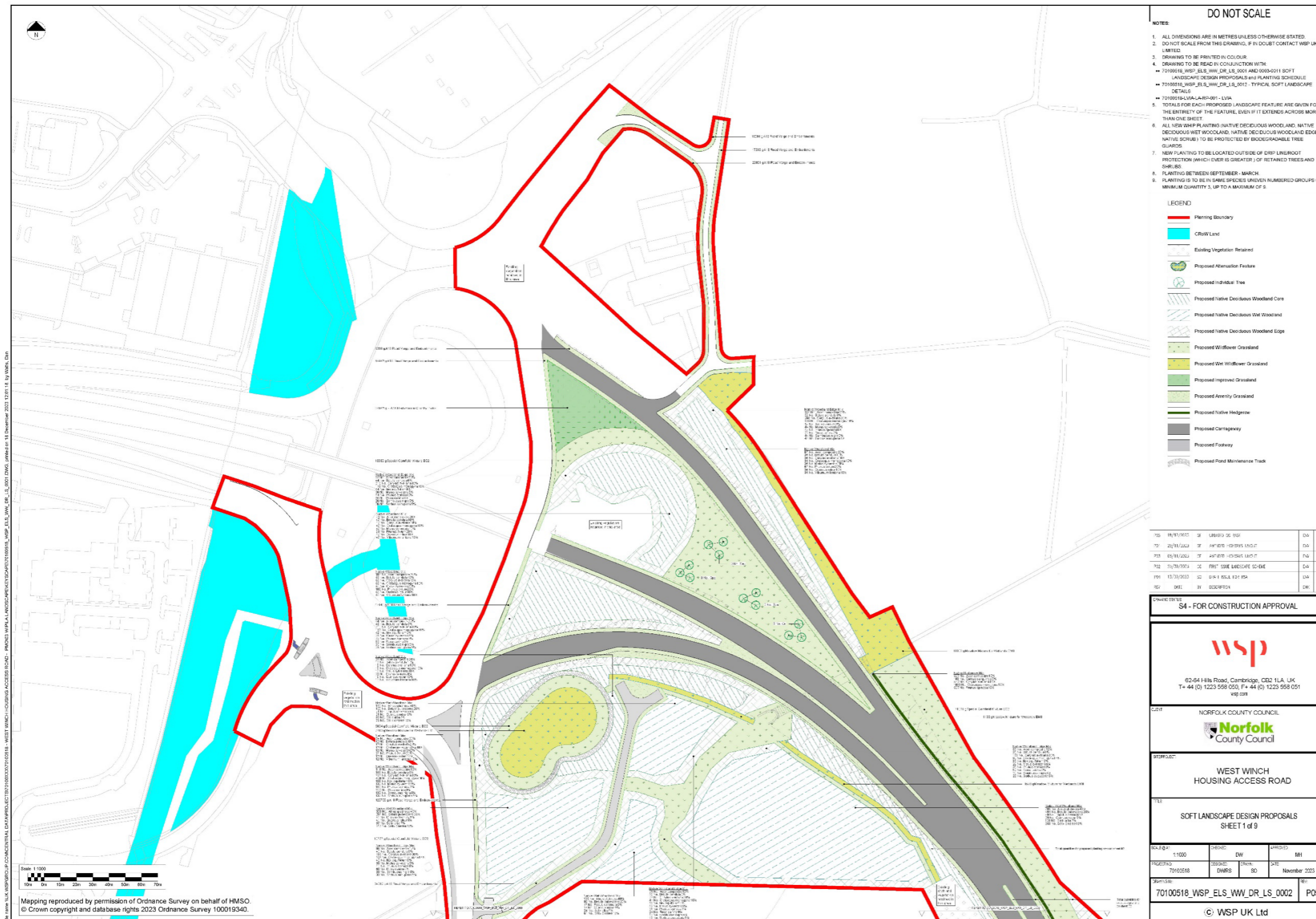


Figure 3 - Soft Landscape Design Proposals Sheet 2 of 9

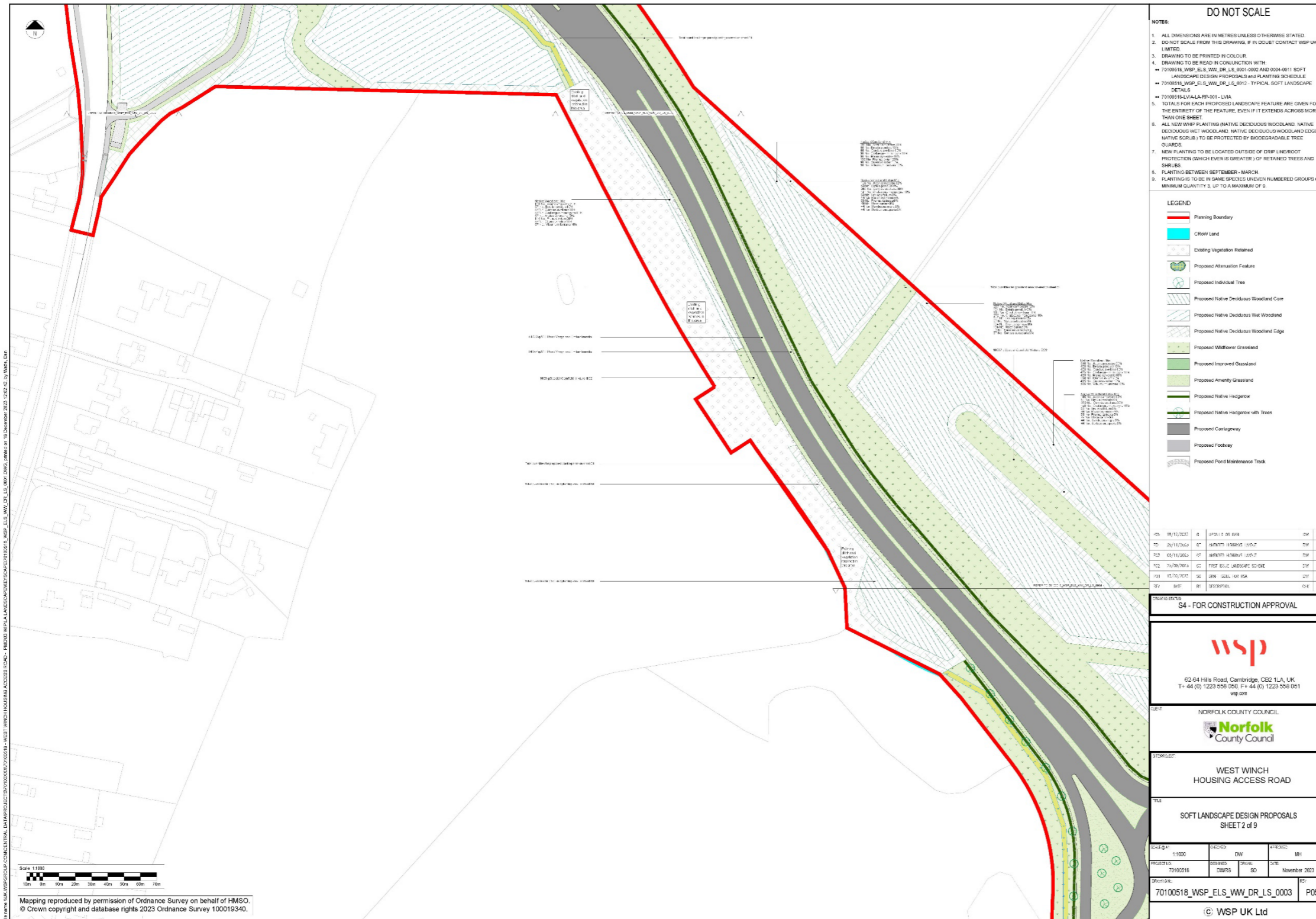


Figure 4 - Soft Landscape Design Proposals Sheet 3 of 9

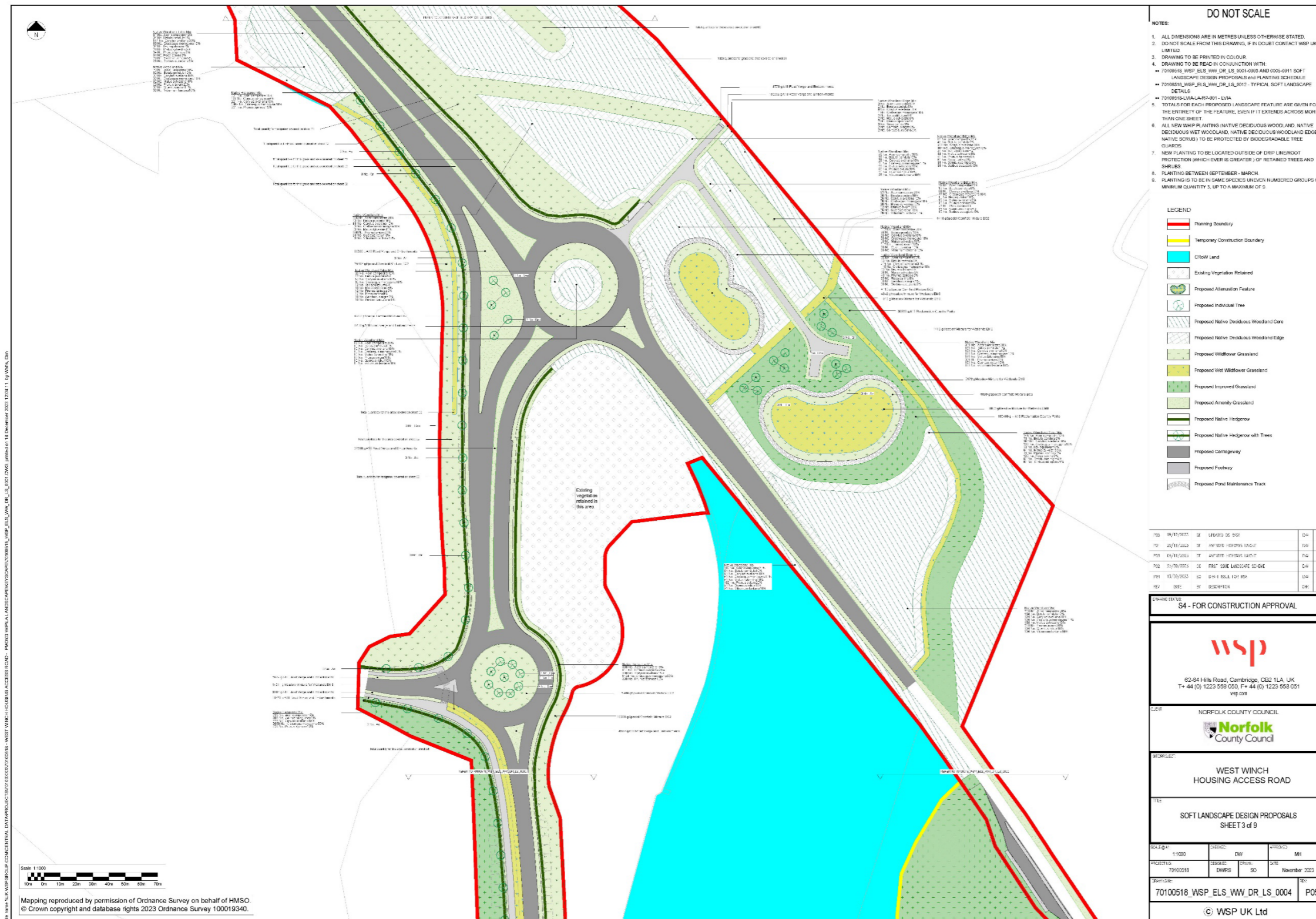


Figure 5 – Soft Landscape Design Proposals Sheet 4 of 9



Figure 6 – Soft Landscape Design Proposals Sheet 5 of 9



Figure 7 – Soft Landscape Design Proposals Sheet 6 of 9

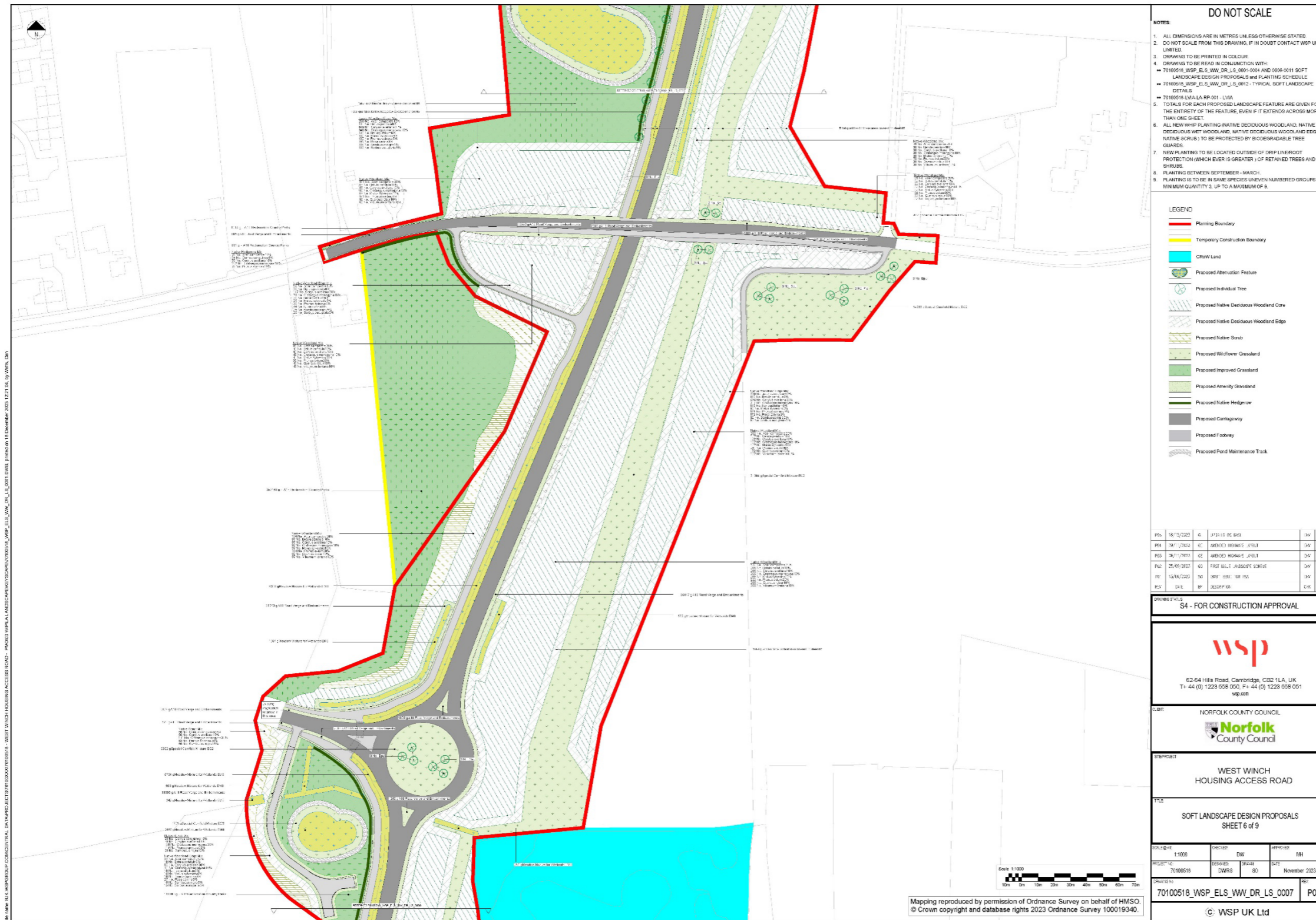
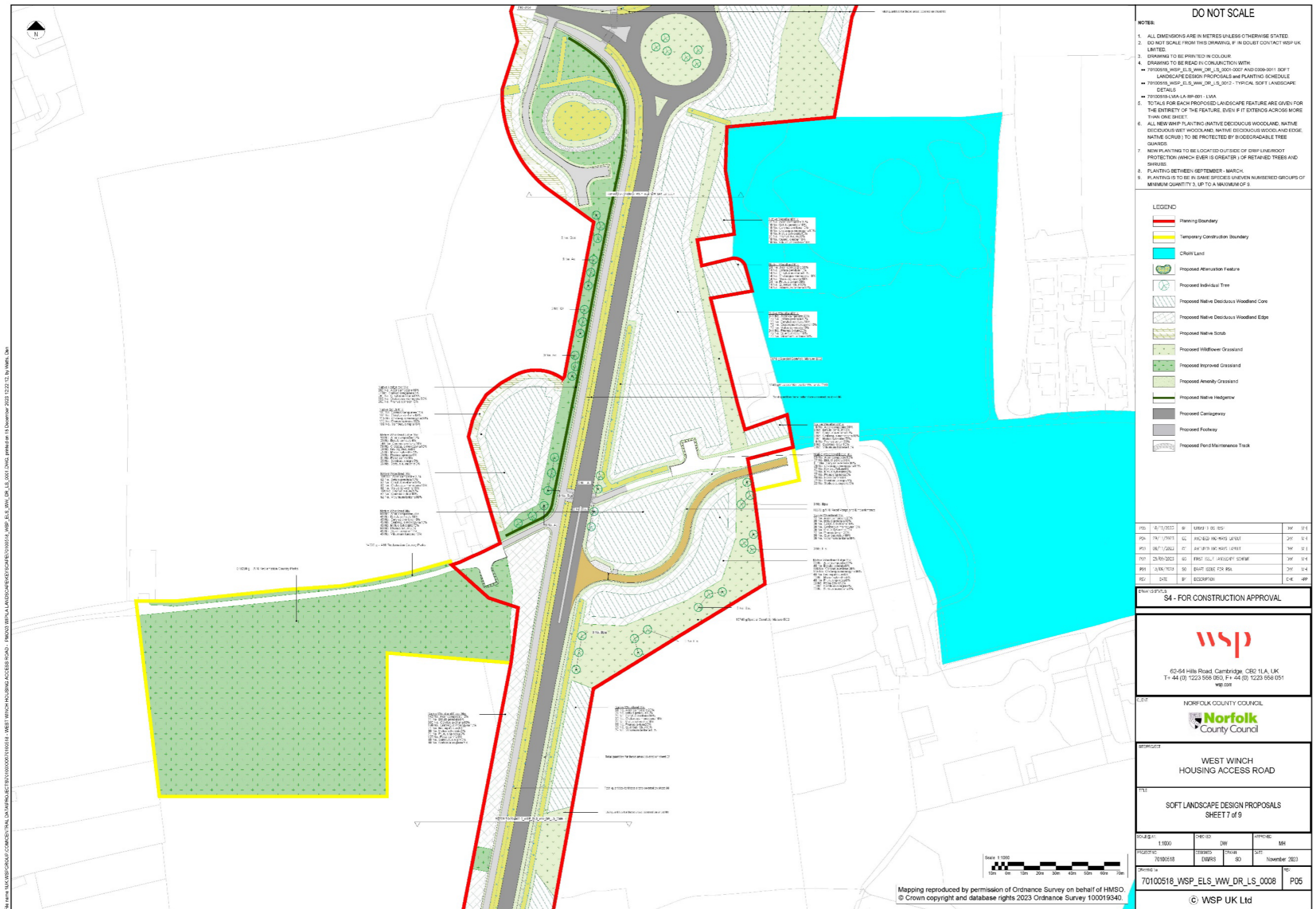


Figure 8 – Soft Landscape Design Proposals Sheet 7 of 9



File name: S:\CPS\2020\CONCEPTUAL DATA\PROJECTS\701000518\0518 - WEST WINCH HOUSING ACCESS ROAD - PHASE 2 WITH LANDSCAPE DESIGN\70100518_WSP_ELS_WW_DR_LS_0001.DWG, printed on: 13 December 2023 12:22:17, by: NWH, DWH

Figure 9 – Soft Landscape Design Proposals Sheet 8 of 9



DO NOT SCALE

NOTES:

- ALL DIMENSIONS ARE IN METRES UNLESS OTHERWISE STATED.
- DO NOT SCALE FROM THIS DRAWING. IF IN DOUBT CONTACT WSP UK LIMITED.
- DRAWING TO BE PRINTED IN COLOUR.
- DRAWING TO BE READ IN CONJUNCTION WITH:
 - 70100518_WSP_ELS_WW_DR_LS_0001-0006 AND 00010-0011 SOFT LANDSCAPE DESIGN PROPOSALS AND PLANTING SCHEDULE
 - 70100518_WSP_ELS_WW_DR_LS_0012 - TYPICAL SOFT LANDSCAPE DETAILS
 - 70100518-LVA/LA/RB-001 - LVA
- TOTALS FOR EACH PROPOSED LANDSCAPE FEATURE ARE GIVEN FOR THE ENTIRETY OF THE FEATURE, EVEN IF IT EXTENDS ACROSS MORE THAN ONE SHEET.
- ALL NEW WHP PLANTING (NATIVE DECIDUOUS WOODLAND, NATIVE DECIDUOUS WET WOODLAND, NATIVE DECIDUOUS WOODLAND EDGE, NATIVE SCRUB) TO BE PROTECTED BY BIOGRADABLE TREE GUARDS.
- NEW PLANTING TO BE LOCATED OUTSIDE OF DRP LINEROOT PROTECTION (WHICH EVER IS GREATER) OF RETAINED TREES AND SHRUBS.
- PLANTING BETWEEN SEPTEMBER - MARCH.
- PLANTING IS TO BE IN SAME SPECIES, UNEVEN NUMBERED GROUPS OF MINIMUM QUANTITY 3, UP TO A MAXIMUM OF 9.

LEGEND

- Planning Boundary
- Temporary Construction Boundary
- Cr&W Land
- Proposed Attenuation Feature
- Proposed Individual Tree
- Proposed Native Deciduous Woodland Core
- Proposed Native Deciduous Woodland Edge
- Proposed Willowover Grassland
- Proposed Wet Willowover Grassland
- Proposed Improved Grassland
- Proposed Amenity Grassland
- Proposed Native Hedge/ow
- Proposed Carriageway
- Proposed Footway
- Proposed Pond Maintenance Track

DIS	16/11/2023	CE	UPDATED QS BASE	270	181
PO	19/11/2023	CE	APPROVED AND REVISED LAYOUT	270	181
PO	26/11/2023	CE	APPROVED AND REVISED LAYOUT	270	181
PO	25/01/2024	JK	FIRST SET FOR CONSTRUCTION	270	181
PO	15/05/2023	SD	DRP LAYOUT FOR RPA	270	181
REV	001	JK	0 - 02/01/2024	010	011

DRAWING NO: **S4 - FOR CONSTRUCTION APPROVAL**

wsp

62-64 Hills Road, Cambridge, CB2 1LA, UK
 T: +44 (0) 1223 556 020, F: +44 (0) 1223 556 051
 www.wsp.com

NORFOLK COUNTY COUNCIL

Norfolk County Council

WEST WINCH HOUSING ACCESS ROAD

SOFT LANDSCAPE DESIGN PROPOSALS SHEET 8 of 9

SCALE:	1:1000	DATE:	05/11/23
PROJECT NO:	70100518	DESIGNED BY:	DW
CHECKED BY:	DW	DATE:	November 2023
DRAWING NO:	70100518_WSP_ELS_WW_DR_LS_0009	REV:	P05

Mapping reproduced by permission of Ordnance Survey on behalf of HMSO. © Crown copyright and database rights 2023 Ordnance Survey 100019340.

© WSP UK Ltd

Figure 11 – Soft Landscape Design Proposals – Planting Schedule

SCHEDULE			
Specimen Tree Planting			
Number	Species	Height	Girth
55	Acer campestre	250-300cm	8-10cm 2x
36	Betula pubescens	250-300cm	8-10cm 2x
25	Fagus sylvatica	250-300cm	8-10cm 2x
27	Quercus robur	250-300cm	8-10cm 2x
31	Quercus robur	250-300cm	8-10cm 2x
36	Sorbus aucuparia	250-300cm	8-10cm 2x
Total: 210			
Native Woodland Core Mix			
Number	Species	Specification	Density
4736	Acer campestre	1+1 Transplant BR	2Ctr
3408	Betula pendula	1+1 Transplant BR	2Ctr
3408	Corylus avellana	1+1 Transplant BR	2Ctr
3408	Crataegus monogyna	1+1 Transplant BR	2Ctr
3408	Malus sylvestris	1+1 Transplant BR	2Ctr
6588	Prunus avium	1+1 Transplant BR	2Ctr
3408	Quercus robur	1+1 Transplant BR	2Ctr
3408	Viburnum lantana	1+1 Transplant BR	2Ctr
Total: 34844			
Native Woodland Edge Mix			
Number	Species	Specification	Density
3727	Acer campestre	1+1 Transplant BR	1.5Ctr
1874	Betula pendula	1+1 Transplant BR	1.5Ctr
5282	Corylus avellana	1+1 Transplant BR	1.5Ctr
4962	Crataegus monogyna	1+1 Transplant BR	1.5Ctr
1674	Ilex aquifolium	1+1 Transplant BR	1.5Ctr
1585	Malus sylvestris	1+1 Transplant BR	1.5Ctr
1874	Prunus spinosa	1+1 Transplant BR	1.5Ctr
2803	Rosa canina	1+1 Transplant BR	1.5Ctr
1585	Sambucus nigra	1+1 Transplant BR	1.5Ctr
1585	Sorbus aucuparia	1+1 Transplant BR	1.5Ctr
Total: 31101			
Native Wet Woodland Mix			
Number	Species	Specification	Density
1414	Alnus glutinosa	1+1 Transplant BR	2Ctr
885	Betula pubescens	1+1 Transplant BR	2Ctr
178	Populus tremula	1+1 Transplant BR	2Ctr
178	Quercus robur	1+1 Transplant BR	2Ctr
248	Salix alba	1+1 Transplant BR	2Ctr
637	Salix cinerea	1+1 Transplant BR	2Ctr
Total: 3541			
Native Scrub Mix			
Number	Species	Specification	Density
233	Cornus sanguinea	1+1 Branched 5/7 bris BR	1Ctr
233	Corylus avellana	1+1 Branched 5/7 bris BR	1Ctr
484	Crataegus monogyna	1+1 Transplant BR	1Ctr
387	Prunus spinosa	1+1 Branched 5/7 bris BR	1Ctr
233	Sambucus nigra	1+1 Branched 5/7 bris BR	1Ctr
Total: 1550			
Native Hedgerow Mix			
Number	Species	Specification	Density
2645	Acer campestre	1+1 Transplant BR 0.4ctr Double Staggered at 0.6m offset	
884	Cornus sanguinea	1+1 Transplant BR 0.4ctr Double Staggered at 0.6m offset	
2645	Corylus avellana	1+1 Transplant BR 0.4ctr Double Staggered at 0.6m offset	
8805	Crataegus monogyna	1+1 Transplant BR 0.4ctr Double Staggered at 0.6m offset	
2645	Prunus spinosa	1+1 Transplant BR 0.4ctr Double Staggered at 0.6m offset	
Total: 17624			
Grass Areas			
Weight	Seed Mix Name	Density	Seed Mix Supplier
415134 g	Special Corfield Mixture EC2	4g/m ²	Ermongate
141952 g	Meadow Mixture for Wetlands EM8	4g/m ²	Ermongate
2822384 g	A16 Reclamation Country Parks	25g/m ²	Germinall Armenty
1236484 g	A16 Road Verge and Embankments	35g/m ²	Germinall Armenty

NOTES			
DO NOT SCALE			
DRAWING TO BE READ IN CONJUNCTION WITH: → 70100518_WSP_ELS_WM_DR_LS_001 - 0018 SOFT LANDSCAPE DESIGN PROPOSALS → 70100518_WSP_ELS_WM_DR_LS_002 - LANDSCAPE DETAILS → 70100518_LSA-LA-RD-001 - LSA → 70100518_LSA-LA-RD-002 - LSA			
2. ALL NEW WHIP PLANTING (NATIVE DECIDUOUS WOODLAND, NATIVE DECIDUOUS WET WOODLAND, NATIVE DECIDUOUS WOODLAND EDGE, NATIVE SCRUB) TO BE PROTECTED BY BIODEGRADABLE TREE GUARDS.			
3. NEW PLANTING TO BE LOCATED OUTSIDE OF DRIP LINE/ROOT PROTECTION (WHICH EVER IS GREATER) OF RETAINED TREES AND SHRUBS.			
4. PLANTING BETWEEN SEPTEMBER - MARCH.			
5. PLANTING IS TO BE IN SAME SPECIES UNEVEN NUMBERED GROUPS OF MINIMUM QUANTITY 3, UP TO A MAXIMUM OF 5.			

REV	DATE	BY	DESCRIPTION	CHKD	APPD
P05	18/11/2023	CE	UPDATED AS SAFE	DW	S+4
P04	16/11/2023	CE	AWAYED HOBBS'S LAYOUT	DW	S+1
P03	16/11/2023	CE	AWAYED HOBBS'S LAYOUT	DW	S+4
P02	16/11/2023	CE	TREE STYLE LANDSCAPE SCHEME	DW	S+1
P01	14/06/2023	SO	SMART ISSUE FOR ISA	DW	S+4
REV	DATE	BY	DESCRIPTION	CHKD	APPD

DRAWING DETAILS	
S4 - FOR CONSTRUCTION APPROVAL	
 62-64 Hills Road, Cambridge, CB2 1LA, UK T: +44 (0) 1223 558 050, F: +44 (0) 1223 558 051 wsp.com	
NORFOLK COUNTY COUNCIL 	
WEST WINCH HOUSING ACCESS ROAD	
SOFT LANDSCAPE DESIGN PROPOSALS PLANTING SCHEDULE	
SCALE: 1:1	DATE: 18/11/2023
PROJECT NO: 70100518	DATE: November 2023
DRAWN BY: DW	CHECKED BY: SO
DATE: 18/11/2023	DATE: 18/11/2023
© WSP UK Ltd	

File name: I:\A_VSP\SOFT_LANDSCAPE\CONCEPTUAL\DATA\PROJECT\70100518\001\0018\0018 - WEST WINCH HOUSING ACCESS ROAD - P0503_WSP_ELS_WM_DR_LS_001_DWG.dwg, printed on 18 December 2023 12:29:46 by WSP, DW

Figure 12 – Typical Soft Landscape Design Details

