

THORN

Promenade LED

Elegant bollard providing light and colour in urban areas



Light and Colour



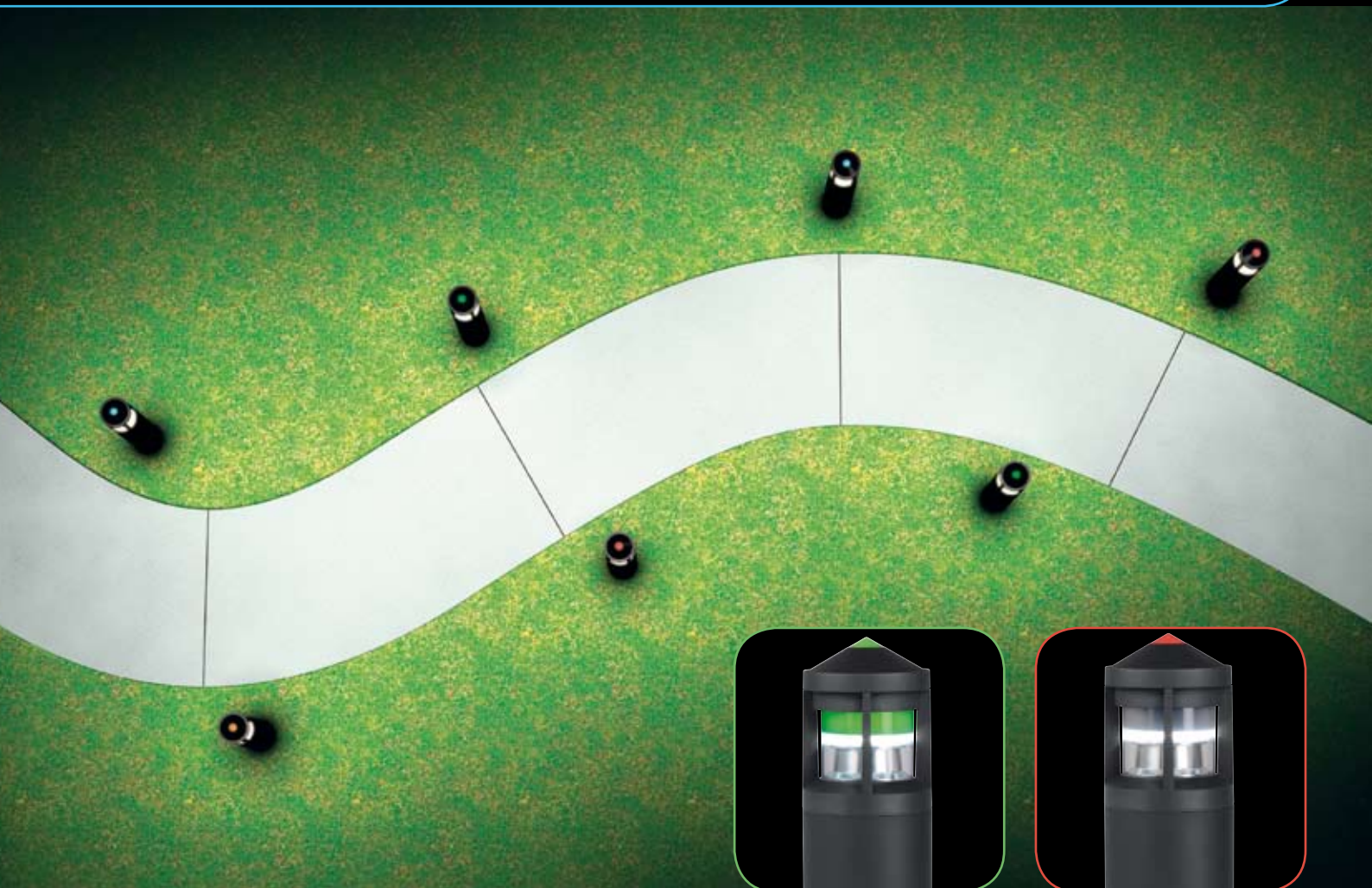
A solid and elegant range of bollard and parapet luminaires equipped with LED's to light and create coloured ambiances in pathways, entrances, business centres and parks

Light

Promenade's new and unique optical system optimises the light output and uniformity from 15 high powered white LEDs enabling this stylish bollard/parapet luminaire to efficiently light pedestrian areas.

Colour

A removable accessory allows either the whole upper part or just the top cone to be lit in colour depending on the required effect: visual guidance or lighting effect. RGB dynamic colour change version on request.



Green version without accessory



Red version with accessory

Subtle colour to create identities in the city



To signal the entrance to a leisure centre, a cinema or a business centre while reinforcing the corporate colours



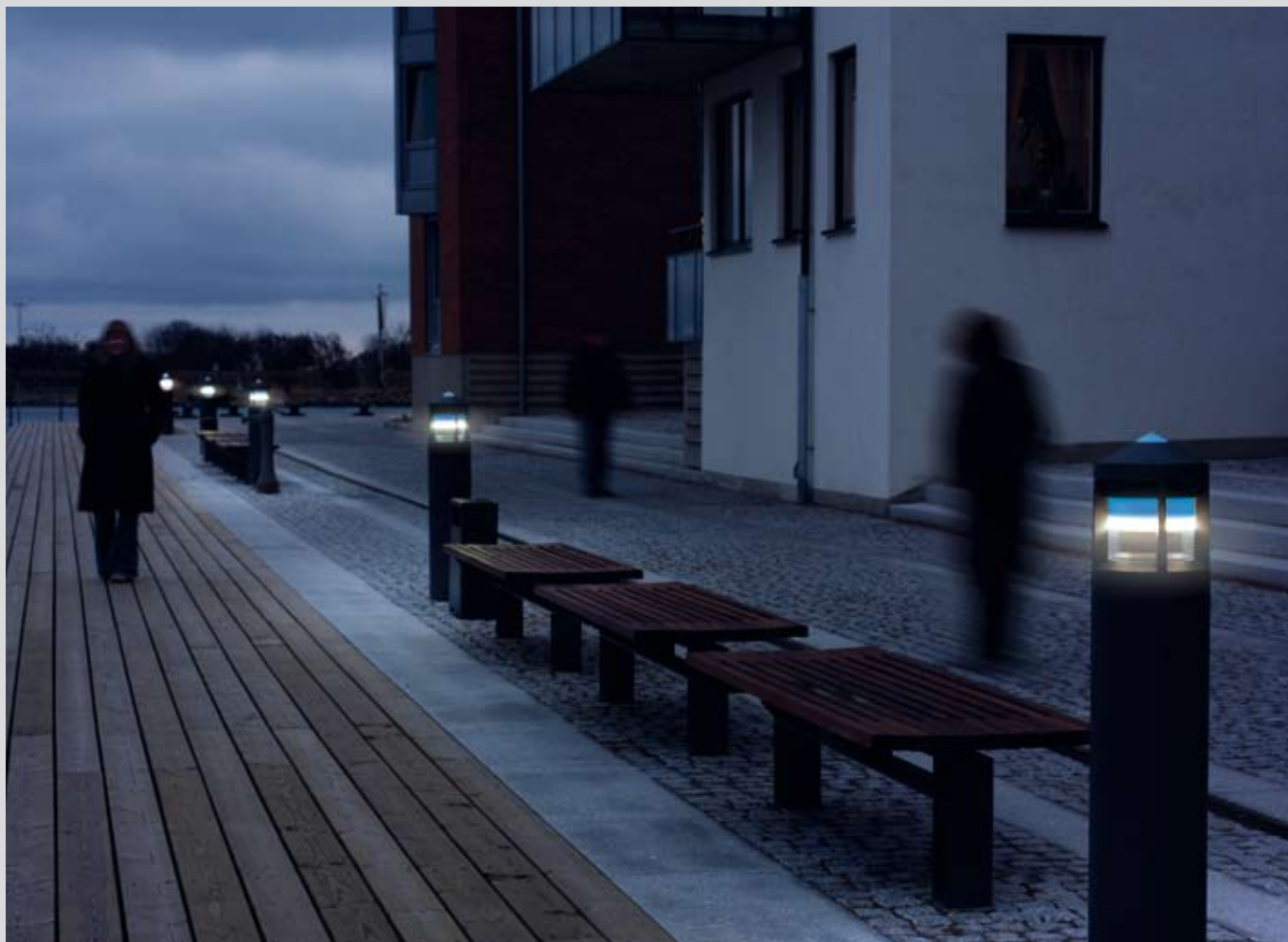
Enhancing a pathway or cycle track through a park



For atmosphere along a riverside footpath or in a leisure area



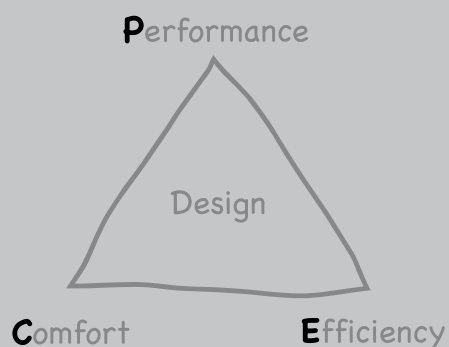
To create a warm and inviting ambience around a hospital or residential building



Performance, efficiency, comfort

Optimised light output ensures:

- Better performance
- Energy efficiency
- No obtrusive light
- No glare



LED Technology

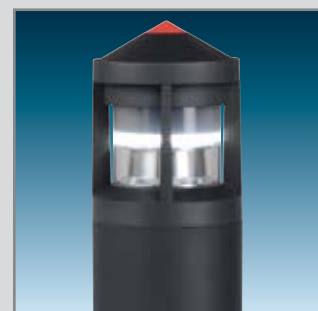
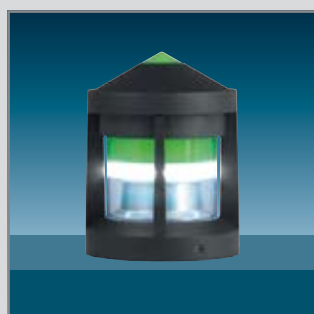
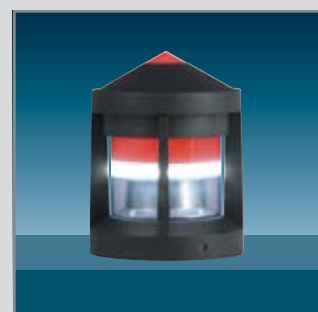
The character of LED technology is quite unique, enabling it to achieve levels of performance and functionality unobtainable with alternative lighting methods.

- Long operating life (up to 50,000hrs)
- Maintenance cost saving
- High efficiency
- Low wattage
- Low voltage
- Cold beam
- High optical performance
- Dynamic colour change (on request)
- No UV
- Instant light
- Extensive choice of colours

Promenade LED



Circular bollard and parapet luminaires with unique optical system combined with LED technology to provide white light and colour effect



Designer: Chr. Hvidt

- Elegant design for easy integration in a variety of applications
- Same design as standard Promenade bollard for retrofitting
- Robust and vandal resistant die-cast aluminium (LM6) body
- Versions for flange, root or parapet mounting

- Expresses safety, strength and harmony in urban amenity lighting applications
- Polycarbonate diffuser with sand-blasted anti-glare band
- Optimised output ensures no obtrusive light
- Low voltage LEDs for energy savings, long life and reduced maintenance, other lamp types available

Ordering Guide, Photometrics & Dimensions



Lamps

- ☒ 15 x white DMX LEDs 1.2W
- ☒ 3 x colour DMX LEDs 1.2W (blue, green, red, amber, or RGB on request) 21.6W total output. Also available in 42W TC-TEL compact fluorescent, 70W HSE-I high pressure sodium and 80W HME high pressure mercury.

Materials/Finish

Head and body: powder coated die-cast LM6 aluminium, anthracite (close to RAL 7024)
 Top cone: opal polycarbonate
 Diffuser: clear polycarbonate with internal sand-blasted band

Installation/Mounting

Flange mounting plate or support for root mounting. LED module and power supply can easily be retrofitted into an existing bollard.

Standards

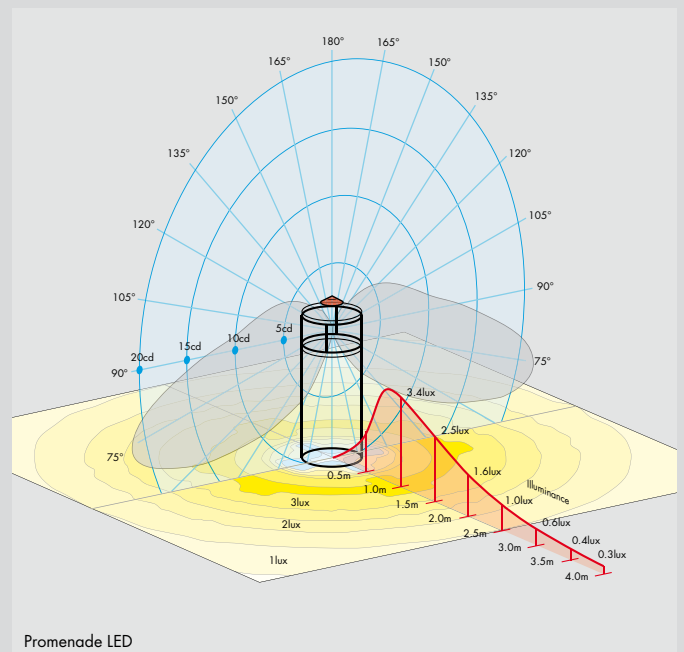
Designed and manufactured to comply with EN60598

- ☐ Class II Electrical
- 850°C fire retardant
- IK10 impact resistance
- ⚡ IP54



Specification

To specify state: Decorative aluminium bollard with clear diffuser including a sand blasted band and with small luminous cone. Complete with 18 x 1.2W DMX LEDs.
 Parapet/flange/root mounted.
 As Thorn Promenade LED.



Promenade LED

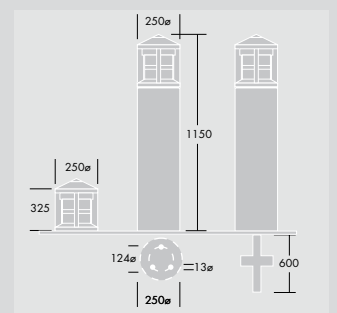
Ordering Guide

Lamps to be ordered separately (except LED versions)

Description	Ilcos Code	Socket	Weight (Kg)	SAP Code
Parapet mounted				
PROMENADE BOL LED WHI/AMB 325MM MPL ANT	-	-	8	96231685
PROMENADE BOL LED WHI/RED 325MM MPL ANT	-	-	8	96231684
PROMENADE BOL LED WHI/GRN 325MM MPL ANT	-	-	8	96231683
PROMENADE BOL LED WHI/BLU 325MM MPL ANT	-	-	8	96231682
Bollard flange mounted				
PROMENADE BOL LED WHI/AMB 1150MM MPL ANT	-	-	15	96250884
PROMENADE BOL LED WHI/RED 1150MM MPL ANT	-	-	15	96250885
PROMENADE BOL LED WHI/GRN 1150MM MPL ANT	-	-	15	96250886
PROMENADE BOL LED WHI/BLU 1150MM MPL ANT	-	-	15	96250887
Other lamp types, Parapet mounted				
PROMENADE BOL 42W TC-TEL 325MM MPL ANT	FSM	GX24q-4	8	96100262
Other lamp types, Bollard flange mounted				
PROMENADE BOL 70W HSE-I 1150MM MPL ANT	SE/I	E27	15	96100249
PROMENADE BOL 42W TC-TEL HF 1150MM MPL ANT	FSM	GX24q-4	15	96004371
PROMENADE BOL 80W HME 1150MM MPL ANT	QE	E27	15	96004372
Root mounted attachment				
V/PROM/MAD BOL GROUND SPIKE	-	-	8	96005367

Project Example:

Promenade LED only
 Pathway for pedestrians
 Pathway width: 1.5m
 bollard installed at 15cm from the pathway
 Single sided
 Spacing 10m
 Emin: 0.6 lx Eav: 2.2 lx
 Emin/Eav: 0.25
 Lighting class: S6 according to EN13201



Contact Details

Thorn Lighting Main Offices

Head Office

Thorn Lighting Limited
Silver Screens, Elstree Way, Borehamwood,
Hertfordshire, WD6 1FE, UK
Tel: (44) 20 8732 9800
Fax: (44) 20 8732 9801
Website: www.thornlighting.com

Australia

Thorn Lighting Pty Limited
13 Cooper Street, P O Box 188, Smithfield,
NSW 2164, Australia
Tel: (61) 2 9604 4300
Fax: (61) 2 9604 4588
E-mail: info@thornlight.com.au
Website: www.thornlight.com.au

Thorn DNT Airfield Lighting Pty Limited
P O Box 548, Unit 2, 7-9 Newcastle Road, Bayswater,
Melbourne, Victoria 3153, Australia
Tel: (61) 3 9720 3233
Fax: (61) 3 9720 8233
E-mail: enquiries@thornlight.com.au
Website: www.thornairfield.com

Austria

Thorn Licht GmbH
Donau-City-Straße 11, 1220 Wien, Austria
Tel: (43) 1 202 66 11
Fax: (43) 1 202 66 11 12
E-mail: office@thorn.at

China

Thorn Lighting (Guangzhou) Operations Ltd
No.12 Lian Yun Road, Eastern Section, GETDD,
Guangzhou 510760, China
Tel: (86) 20 3228 2706
Fax: (86) 20 3228 1777
E-mail: sales@thorn.com.cn

Thorn Lighting (Tianjin) Co. Ltd
332 Hongqi Road, Tianjin 300190, China
Tel: (86) 22 8369 2303
Fax: (86) 22 8369 2302
E-mail: marketing@thornlj.com.cn

Czech Republic

Thorn Lighting CS spol. s.r.o.,
Na Březince 6/930, 150 00 Praha 5
Czech Republic
Tel: (420) 224 315 252
Fax: (420) 233 326 313
E-mail: thorn@thornlight.cz
Website: www.thornlight.cz

Denmark

Thorn Lighting A/S
Albuen 44, 6000 Kolding, Denmark
Tel: (45) 7696 3600
Fax: (45) 7696 3601
Website: www.thornlight.dk

Estonia

Thorn Lighting
Eesti Filiaal, Tatari 23/25, EE-10116 Tallin, Estonia
Tel: (372) 656 3505
Fax: (372) 656 3227
E-mail: ando@thorn.ee

France

Thorn Europhane SA
156 Boulevard Haussmann,
Cedex 08, Paris 75379, France
Tel: (33) 1 49 53 6262
Fax: (33) 1 49 53 6240
Website: www.thorn.fr

Thorn Airfield Lighting
156 Boulevard Haussmann,
75379 Paris Cedex 08, France
Tel: (33) 1 49 53 62 62
Fax: (33) 1 49 53 62 89
E-mail: thornairfield@thorn.fr
Website: www.thornairfield.com

Hong Kong

Thorn Lighting (Hong Kong) Limited
Unit 4301, Level 43, Tower 1, Metroplaza,
223 Hing Fong Road, Kwai Chung, N.T.,
Hong Kong, China
Tel: (852) 2578 4303
Fax: (852) 2887 0247
E-mail: info@thorn.com.hk
Website: www.thorn.com.hk

Ireland

Thorn Lighting (Ireland) Limited
320 Harold's Cross Road, Dublin 6W, Ireland
Tel: (353) 1 4922 877
Fax: (353) 1 4922 724
E-mail: enq.dublin@thornlight.com

Italy

Thorn Europhane Spa
Via G Di Vittorio, 2, Cadriano di Granarolo,
Bologna 40057, Italy
Tel: (39) 051 763391
Fax: (39) 051 763088
E-mail: info@thornlighting.it
Website: www.thornlighting.it

Latvia

Thorn Lighting
Representative Office, Skolas Street 21-216,
Riga LV 1010, Latvia
Tel: (37) 7 332 660
Fax: (37) 7 332 660

Lithuania

Thorn Lighting
Representative Office, Kalvariju Street 1,
Vilnius 09310, Lithuania
Tel: (370) 5 2 750 701
Fax: (370) 5 2 731 480

New Zealand

Thorn Lighting (NZ) Ltd
399 Rosebank Road, P O Box 71134, Rosebank,
Auckland 7, New Zealand
Tel: (64) 9 828 7155
Fax: (64) 9 828 7591

Norway

Thorn Lighting AS
Industriveien 11, P O Box 63, Skytta 1483, Norway
Tel: (47) 6706 2233
Fax: (47) 6706 0351
E-mail: s.kvernberg@thornlight.no

Poland

Thorn Lighting Polska Sp.z o.o.,
Ul. Gazowa 26A, Wroclaw 50-513, Poland
Tel: (48) 71 7833 740
Fax: (48) 71 3366 029
E-mail: thorn@thornlight.pl
Website: www.thornlight.pl

Russia

Thorn Lighting
Novoslobodskaya Str., 21, office 406 Business Center
"Novoslobodskaya 21", Moscow 103030, Russia
Tel: (7) 495 981 35 41
Fax: (7) 495 981 35 42
E-mail: office.moscow@thorn.ru
Website: www.thorn.ru

Thorn Lighting
Representative Office, 1 Artilleriyskaya str.,
1 BC 'Europa House', St Petersburg 191104, Russia
Tel: (7) 812 718 8112
Fax: (7) 812 718 8119
E-mail: office.petersburg@thorn.ru
Website: www.thorn.ru

Singapore

Thorn Lighting (Singapore) Pte Ltd
5 Kaki Bukit Crescent, 04-02 Koyotech Building,
416238 Singapore
Tel: (65) 6844 5800
Fax: (65) 6745 7707
E-mail: info@thornlight.com.sg
Website: www.thornlight.com.sg

Sweden

Thorn Lighting AB
Industrigatan, Box 305,
SE-261 23 Landskrona, Sweden
Tel: (46) 418 520 00
Fax: (46) 418 265 74
E-mail: thorn@thornlight.se
Website: www.thornlight.se

United Arab Emirates

Thorn Lighting Ltd Dubai
Al Shoala Building, Office 301, Block E,
P O Box 1200, Deira, Dubai, UAE
Tel: (971) 4 2940181
Fax: (971) 4 2948838
E-mail: tluae@emirates.net.ae

Thorn Gulf LLC

Al Shoala Building, Office 301/2,
Block E, PO Box 1200, Deira, Dubai, UAE
Tel: (971) 4 2948938
Fax: (971) 4 2948838
E-mail: thorg@emirates.net.ae

United Kingdom

Thorn Lighting Limited
Silver Screens, Elstree Way,
Borehamwood, Hertfordshire, WD6 1FE, UK
Tel: (44) 20 8732 9800
Fax: (44) 20 8732 9801
E-mail: brochures@thornlight.com
Website: www.thornlighting.co.uk

Thorn Airfield Lighting

Silver Screens, Elstree Way,
Borehamwood, Hertfordshire, WD6 1FE, UK
Tel: (44) 20 8732 9804
Fax: (44) 1708 776 285
E-mail: airfield@thornlight.com or thornagluk@aol.com
Website: www.thornairfield.com

International Sales

Thorn Lighting Limited
156 Boulevard Haussmann,
Cedex 08, Paris 75379, France
Tel: (33) 1 49 53 6262
Fax: (33) 1 49 53 6240

Thorn Lighting Limited

Silver Screens, Elstree Way, Borehamwood,
Hertfordshire, WD6 1FE, UK
Tel: (44) 20 8732 9802
Fax: (44) 1708 741 827
E-mail: international.sales@thornlight.com

www.thornlighting.com

THORN

Thorn Lighting is constantly developing and improving its products. All descriptions, illustrations, drawings and specifications in this publication present only general particulars and shall not form part of any contract. The right is reserved to change specifications without prior notification or public announcement. All goods supplied by the company are supplied subject to the company's General Conditions of Sale, a copy of which is available on request. All measurements are in millimetres and weights in kilograms unless otherwise stated.

Publication No: 376 (INT) Publication Date: 07/06